



[Go to Product page](#)

Datasheet for ABIN7160457  
**anti-MOG antibody (AA 30-154)**

2 Images

Overview

Quantity:	100 µL
Target:	MOG
Binding Specificity:	AA 30-154
Reactivity:	Human
Host:	Rabbit
Clonality:	Polyclonal
Conjugate:	This MOG antibody is un-conjugated
Application:	Immunohistochemistry (IHC), ELISA

Product Details

Immunogen:	Recombinant Human Myelin-oligodendrocyte glycoprotein protein (30-154AA)
Isotype:	IgG
Cross-Reactivity:	Human
Purification:	Antigen Affinity Purified

Target Details

Target:	MOG
Alternative Name:	MOG ( <a href="#">MOG Products</a> )
Background:	Background: Mediates homophilic cell-cell adhesion (By similarity). Minor component of the myelin sheath. May be involved in completion and/or maintenance of the myelin sheath and in

## Target Details

cell-cell communication.

Aliases: BTN6 antibody, BTNL11 antibody, MGC26137 antibody, MOG alpha 5 antibody, MOG alpha 6 antibody, MOG AluA antibody, MOG AluB antibody, MOG antibody, MOG Ig AluB antibody, MOG\_HUMAN antibody, MOGIG2 antibody, Myelin oligodendrocyte glycoprotein antibody, Myelin-oligodendrocyte glycoprotein antibody, NRCLP7 antibody

UniProt: [Q16653](#)

## Application Details

Application Notes: Recommended dilution: IHC:1:20-1:200,

Restrictions: For Research Use only

## Handling

Format: Liquid

Buffer: PBS with 0.02 % sodium azide, 50 % glycerol, pH 7.3.

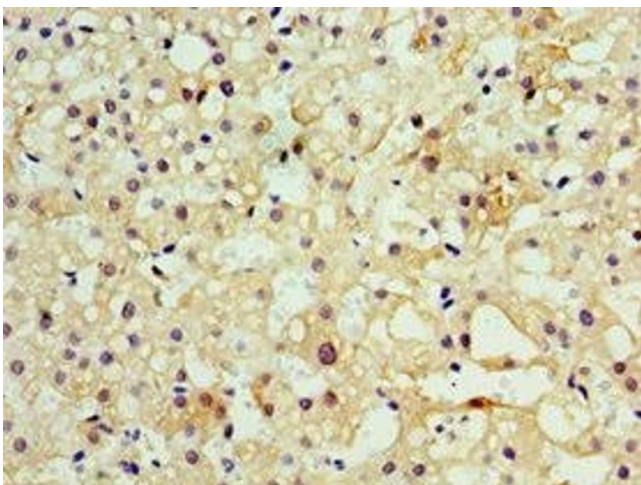
Preservative: Sodium azide

Precaution of Use: This product contains Sodium azide: a POISONOUS AND HAZARDOUS SUBSTANCE which should be handled by trained staff only.

Storage: -20 °C,-80 °C

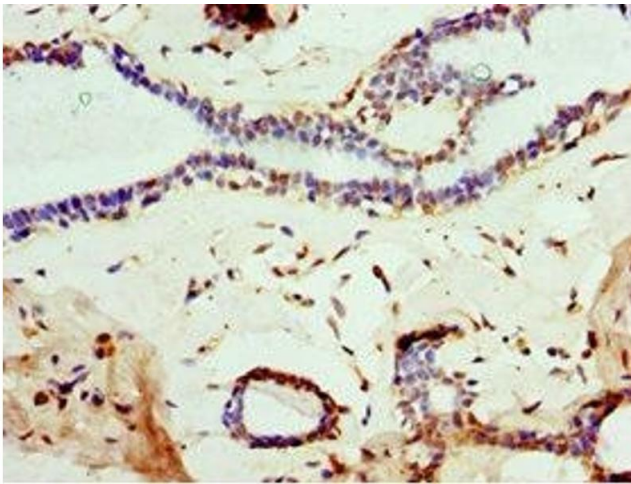
Storage Comment: Upon receipt, store at -20°C or -80°C. Avoid repeated freeze.

## Images



### Immunohistochemistry

**Image 1.** Immunohistochemistry of paraffin-embedded human liver cancer using ABIN7160457 at dilution of 1:100



### Immunohistochemistry

**Image 2.** Immunohistochemistry of paraffin-embedded human breast cancer using ABIN7160457 at dilution of 1:100