



[Go to Product page](#)

Datasheet for ABIN7160478
anti-MZF1 antibody (AA 186-354)

3 Images

Overview

Quantity:	100 µg
Target:	MZF1
Binding Specificity:	AA 186-354
Reactivity:	Human
Host:	Rabbit
Clonality:	Polyclonal
Conjugate:	This MZF1 antibody is un-conjugated
Application:	Western Blotting (WB), ELISA, Immunohistochemistry (IHC)

Product Details

Immunogen:	Recombinant Human Myeloid zinc finger 1 protein (186-354AA)
Isotype:	IgG
Cross-Reactivity:	Human
Purification:	>95%, Protein G purified

Target Details

Target:	MZF1
Alternative Name:	MZF1 (MZF1 Products)
Background:	Background: Binds to target promoter DNA and functions as transcription regulator. Regulates transcription from the PADI1 and CDH2 promoter. May be one regulator of transcriptional

Target Details

events during hemopoietic development.

Aliases: Myeloid zinc finger 1 antibody, MZF 1 antibody, MZF-1 antibody, MZF1 antibody, MZF1_HUMAN antibody, MZF1B antibody, Zfp98 antibody, Zinc finger and SCAN domain containing protein 6 antibody, Zinc finger and SCAN domain-containing protein 6 antibody, Zinc finger protein 42 antibody, ZNF42 antibody, ZSCAN6 antibody

UniProt: [P28698](#)

Application Details

Application Notes: Recommended dilution: WB:1:500-1:5000, IHC:1:200-1:500,

Restrictions: For Research Use only

Handling

Format: Liquid

Buffer: Preservative: 0.03 % Proclin 300
Constituents: 50 % Glycerol, 0.01M PBS, pH 7.4

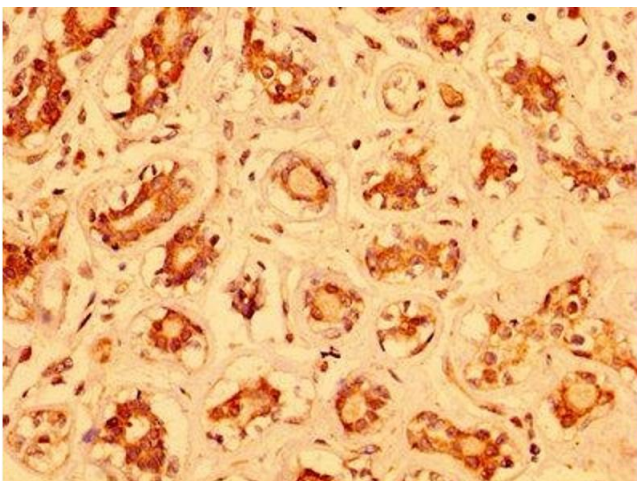
Preservative: ProClin

Precaution of Use: This product contains ProClin: a POISONOUS AND HAZARDOUS SUBSTANCE which should be handled by trained staff only.

Storage: -20 °C,-80 °C

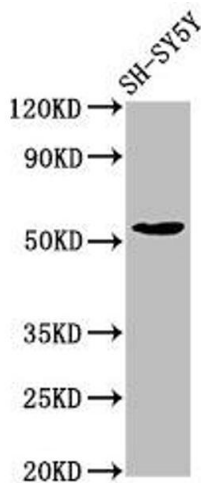
Storage Comment: Upon receipt, store at -20°C or -80°C. Avoid repeated freeze.

Images



Immunohistochemistry

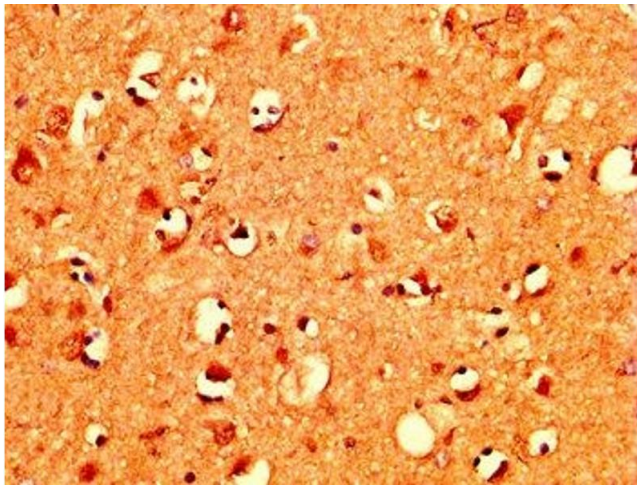
Image 1. IHC image of ABIN7160478 diluted at 1:400 and staining in paraffin-embedded human breast cancer performed on a Leica Bond™ system. After dewaxing and hydration, antigen retrieval was mediated by high pressure in a citrate buffer (pH 6.0). Section was blocked with 10% normal goat serum 30min at RT. Then primary antibody (1% BSA) was incubated at 4°C overnight. The primary is detected by a biotinylated secondary antibody and



visualized using an HRP conjugated SP system.

Western Blotting

Image 2. Western Blot Positive WB detected in: SH-SY5Y whole cell lysate All lanes: MZF1 antibody at 7.7 $\mu\text{g}/\text{mL}$ Secondary Goat polyclonal to rabbit IgG at 1/50000 dilution Predicted band size: 83, 55, 32 kDa Observed band size: 55 kDa



Immunohistochemistry

Image 3. IHC image of ABIN7160478 diluted at 1:400 and staining in paraffin-embedded human brain tissue performed on a Leica Bond™ system. After dewaxing and hydration, antigen retrieval was mediated by high pressure in a citrate buffer (pH 6.0). Section was blocked with 10% normal goat serum 30min at RT. Then primary antibody (1% BSA) was incubated at 4°C overnight. The primary is detected by a biotinylated secondary antibody and visualized using an HRP conjugated SP system.