

Datasheet for ABIN7160488

anti-Myeloperoxidase antibody (AA 165-278)**2** Images[Go to Product page](#)

Overview

Quantity:	100 µg
Target:	Myeloperoxidase (MPO)
Binding Specificity:	AA 165-278
Reactivity:	Human
Host:	Rabbit
Clonality:	Polyclonal
Conjugate:	This Myeloperoxidase antibody is un-conjugated
Application:	ELISA, Immunohistochemistry (IHC), Immunofluorescence (IF)

Product Details

Immunogen:	Recombinant Human Myeloperoxidase protein (165-278AA)
Isotype:	IgG
Cross-Reactivity:	Human
Purification:	>95%, Protein G purified

Target Details

Target:	Myeloperoxidase (MPO)
Alternative Name:	MPO (MPO Products)
Background:	84 kDa myeloperoxidase antibody, 89 kDa myeloperoxidase antibody, EC 1.11.1.7 antibody, EC1.11.2.2 antibody, fj80f04 antibody, MPO antibody, mpx antibody, myeloid-specific

Target Details

peroxidase antibody, Myeloperoxidase antibody, Myeloperoxidase heavy chain antibody, Myeloperoxidase light chain antibody, PERM_HUMAN antibody, wu:fj80f04 antibody

UniProt: [P05164](#)

Pathways: [Chromatin Binding](#)

Application Details

Application Notes: Recommended dilution: IHC:1:500-1:1000, IF:1:50-1:200,

Restrictions: For Research Use only

Handling

Format: Liquid

Buffer: Preservative: 0.03 % Proclin 300
Constituents: 50 % Glycerol, 0.01M PBS, PH 7.4

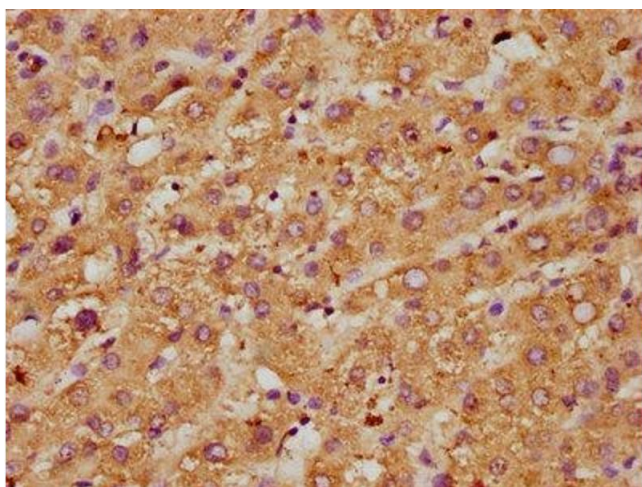
Preservative: ProClin

Precaution of Use: This product contains ProClin: a POISONOUS AND HAZARDOUS SUBSTANCE which should be handled by trained staff only.

Storage: -20 °C,-80 °C

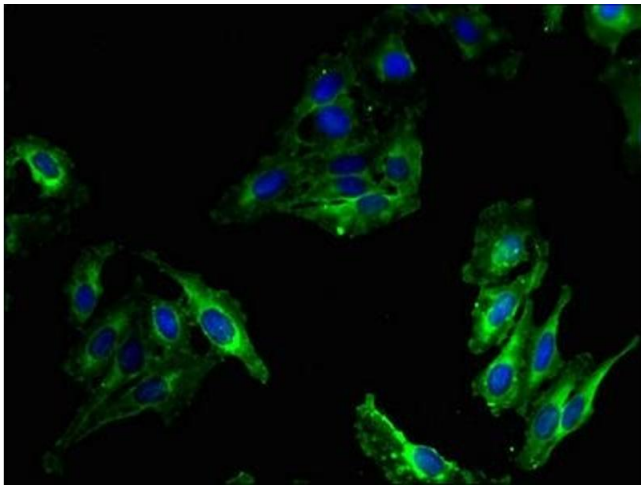
Storage Comment: Upon receipt, store at -20°C or -80°C. Avoid repeated freeze.

Images



Immunohistochemistry

Image 1. IHC image of ABIN7160488 diluted at 1:600 and staining in paraffin-embedded human liver tissue performed on a Leica Bond™ system. After dewaxing and hydration, antigen retrieval was mediated by high pressure in a citrate buffer (pH 6.0). Section was blocked with 10 % normal goat serum 30 min at RT. Then primary antibody (1 % BSA) was incubated at 4 °C overnight. The primary is detected by a biotinylated secondary antibody and visualized using an HRP conjugated SP system.



Immunofluorescence

Image 2. Immunofluorescent analysis of Hela cells using ABIN7160488 at dilution of 1:100 and Alexa Fluor 488-conjugated AffiniPure Goat Anti-Rabbit IgG(H+L)