

Datasheet for ABIN7160505  
**anti-MEF2C antibody (AA 170-380)**[Go to Product page](#)

## 2 Images

## Overview

Quantity:	100 µL
Target:	MEF2C
Binding Specificity:	AA 170-380
Reactivity:	Human
Host:	Rabbit
Clonality:	Polyclonal
Conjugate:	This MEF2C antibody is un-conjugated
Application:	Western Blotting (WB), ELISA, Immunohistochemistry (IHC)

## Product Details

Immunogen:	Recombinant Human Myocyte-specific enhancer factor 2C protein (170-380AA)
Isotype:	IgG
Cross-Reactivity:	Human, Mouse
Purification:	Antigen Affinity Purified

## Target Details

Target:	MEF2C
Alternative Name:	MEF2C ( <a href="#">MEF2C Products</a> )
Background:	Background: Transcription activator which binds specifically to the MEF2 element present in the regulatory regions of many muscle-specific genes. Controls cardiac morphogenesis and

## Target Details

myogenesis, and is also involved in vascular development. Plays an essential role in hippocampal-dependent learning and memory by suppressing the number of excitatory synapses and thus regulating basal and evoked synaptic transmission. Crucial for normal neuronal development, distribution, and electrical activity in the neocortex. Necessary for proper development of megakaryocytes and platelets and for bone marrow B-lymphopoiesis. Required for B-cell survival and proliferation in response to BCR stimulation, efficient IgG1 antibody responses to T-cell-dependent antigens and for normal induction of germinal center B-cells. May also be involved in neurogenesis and in the development of cortical architecture (By similarity). Isoform 3 and isoform 4, which lack the repressor domain, are more active than isoform 1 and isoform 2.

Aliases: C5DELq14.3 antibody, DEL5q14.3 antibody, MADS box transcription enhancer factor 2 polypeptide C (myocyte enhancer factor 2C) antibody, MADS box transcription enhancer factor 2, polypeptide C antibody, MEF2C antibody, MEF2C\_HUMAN antibody, Myocyte enhancer factor 2C antibody, Myocyte specific enhancer factor 2C antibody, Myocyte-specific enhancer factor 2C antibody, OTTHUMP00000222409 antibody, Similar to MADS box transcription enhancer factor 2 polypeptide C antibody

UniProt: [Q06413](#)

Pathways: [Neurotrophin Signaling Pathway](#), [Activation of Innate immune Response](#), [Cellular Response to Molecule of Bacterial Origin](#), [Carbohydrate Homeostasis](#), [Chromatin Binding](#), [Regulation of Muscle Cell Differentiation](#), [Skeletal Muscle Fiber Development](#), [Toll-Like Receptors Cascades](#), [BCR Signaling](#)

## Application Details

Application Notes: Recommended dilution: WB:1:200-1:1000, IHC:1:20-1:200,

Restrictions: For Research Use only

## Handling

Format: Liquid

Buffer: PBS with 0.02 % sodium azide, 50 % glycerol, pH 7.3.

Preservative: Sodium azide

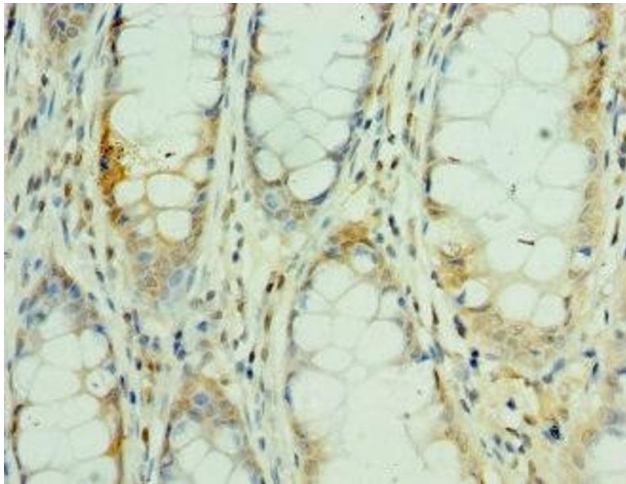
Precaution of Use: This product contains Sodium azide: a POISONOUS AND HAZARDOUS SUBSTANCE which should be handled by trained staff only.

## Handling

Storage: -20 °C, -80 °C

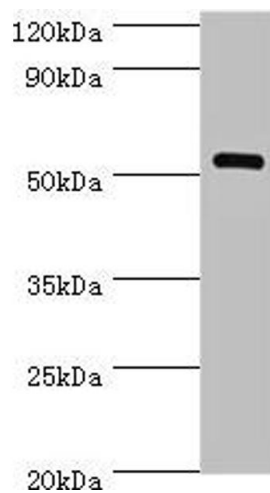
Storage Comment: Upon receipt, store at -20°C or -80°C. Avoid repeated freeze.

## Images



### Immunohistochemistry

**Image 1.** Immunohistochemistry of paraffin-embedded human colon cancer using ABIN7160505 at dilution of 1:100



### Western Blotting

**Image 2.** Western blot All lanes: MEF2C antibody at 1 µg/mL + Mouse skeletal muscle tissue Secondary Goat polyclonal to rabbit IgG at 1/10000 dilution Predicted band size: 52, 51, 48, 45, 53 kDa Observed band size: 52 kDa