

Datasheet for ABIN7160506  
**anti-MEF2D antibody (AA 299-509)**[Go to Product page](#)

## 3 Images

## Overview

Quantity:	100 µg
Target:	MEF2D
Binding Specificity:	AA 299-509
Reactivity:	Human
Host:	Rabbit
Clonality:	Polyclonal
Conjugate:	This MEF2D antibody is un-conjugated
Application:	Western Blotting (WB), ELISA, Immunohistochemistry (IHC)

## Product Details

Immunogen:	Recombinant Human Myocyte-specific enhancer factor 2D protein (299-509AA)
Isotype:	IgG
Cross-Reactivity:	Human, Mouse
Purification:	>95%, Protein G purified

## Target Details

Target:	MEF2D
Alternative Name:	MEF2D ( <a href="#">MEF2D Products</a> )
Background:	Background: Transcriptional activator which binds specifically to the MEF2 element, 5\'-YTA[AT](4)TAR-3\'\'', found in numerous muscle-specific, growth factor- and stress-induced

## Target Details

genes. Mediates cellular functions not only in skeletal and cardiac muscle development, but also in neuronal differentiation and survival. Plays diverse roles in the control of cell growth, survival and apoptosis via p38 MAPK signaling in muscle-specific and/or growth factor-related transcription. Plays a critical role in the regulation of neuronal apoptosis (By similarity).

Aliases: DKFZp686I1536 antibody, MADS box transcription factor 2 polypeptide D antibody, Mef2d antibody, MEF2D\_HUMAN antibody, Myocyte enhancer factor 2D antibody, Myocyte specific enhancer factor 2, polypeptide D antibody, Myocyte specific enhancer factor 2D antibody, Myocyte-specific enhancer factor 2D antibody

UniProt: [Q14814](#)

## Application Details

Application Notes: Recommended dilution: WB:1:500-1:5000, IHC:1:200-1:500,

Restrictions: For Research Use only

## Handling

Format: Liquid

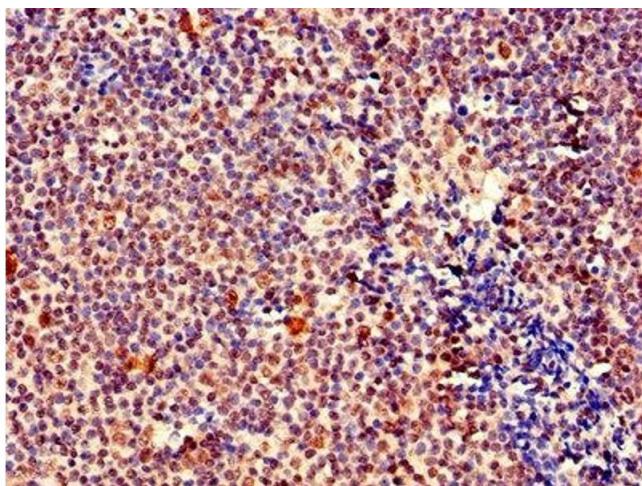
Buffer: Preservative: 0.03 % Proclin 300  
Constituents: 50 % Glycerol, 0.01M PBS, pH 7.4

Preservative: ProClin

Precaution of Use: This product contains ProClin: a POISONOUS AND HAZARDOUS SUBSTANCE which should be handled by trained staff only.

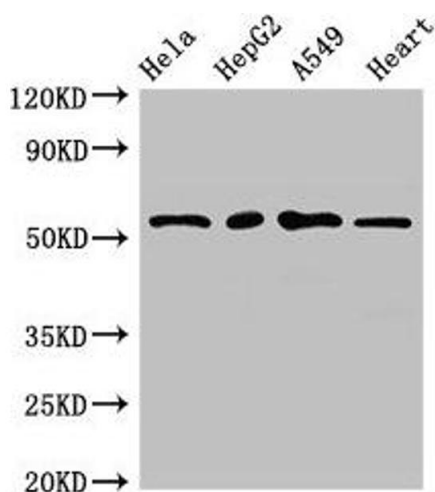
Storage: -20 °C,-80 °C

Storage Comment: Upon receipt, store at -20°C or -80°C. Avoid repeated freeze.



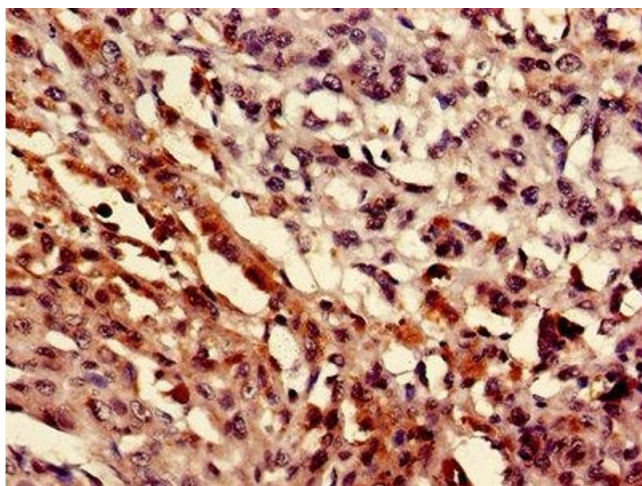
#### Immunohistochemistry

**Image 1.** IHC image of ABIN7160506 diluted at 1:400 and staining in paraffin-embedded human tonsil tissue performed on a Leica Bond™ system. After dewaxing and hydration, antigen retrieval was mediated by high pressure in a citrate buffer (pH 6.0). Section was blocked with 10% normal goat serum 30min at RT. Then primary antibody (1% BSA) was incubated at 4°C overnight. The primary is detected by a biotinylated secondary antibody and visualized using an HRP conjugated SP system.



#### Western Blotting

**Image 2.** Western Blot Positive WB detected in: Hela whole cell lysate, HepG2 whole cell lysate, A549 whole cell lysate, Mouse heart tissue All lanes: MEF2D antibody at 2.7 µg/mL Secondary Goat polyclonal to rabbit IgG at 1/50000 dilution Predicted band size: 56, 57, 51, 50 kDa Observed band size: 56 kDa



#### Immunohistochemistry

**Image 3.** IHC image of ABIN7160506 diluted at 1:400 and staining in paraffin-embedded human melanoma performed on a Leica Bond™ system. After dewaxing and hydration, antigen retrieval was mediated by high pressure in a citrate buffer (pH 6.0). Section was blocked with 10% normal goat serum 30min at RT. Then primary antibody (1% BSA) was incubated at 4°C overnight. The primary is detected by a biotinylated secondary antibody and visualized using an HRP conjugated SP system.