



[Go to Product page](#)

Datasheet for ABIN7160526
anti-PDE4DIP antibody (AA 1-310)

2 Images

Overview

Quantity:	100 µL
Target:	PDE4DIP
Binding Specificity:	AA 1-310
Reactivity:	Human
Host:	Rabbit
Clonality:	Polyclonal
Conjugate:	This PDE4DIP antibody is un-conjugated
Application:	Immunohistochemistry (IHC), ELISA

Product Details

Immunogen:	Recombinant Human Myomegalin protein (1-310AA)
Isotype:	IgG
Cross-Reactivity:	Human
Purification:	Antigen Affinity Purified

Target Details

Target:	PDE4DIP
Alternative Name:	PDE4DIP (PDE4DIP Products)
Background:	Background: May function as an anchor sequestering components of the cAMP-dependent pathway to Golgi and/or centrosomes.

Target Details

Aliases: Cardiomyopathy associated protein 2 antibody, Cardiomyopathy-associated protein 2 antibody, CMYA2 antibody, MMGL antibody, MYOME_HUMAN antibody, Myomegalin antibody, Pde4dip antibody, Phosphodiesterase 4D interacting protein antibody, Phosphodiesterase 4D-interacting protein antibody

UniProt: [Q5VU43](#)

Pathways: [SARS-CoV-2 Protein Interactome](#)

Application Details

Application Notes: Recommended dilution: IHC:1:20-1:200,

Restrictions: For Research Use only

Handling

Format: Liquid

Buffer: PBS with 0.02 % sodium azide, 50 % glycerol, pH 7.3.

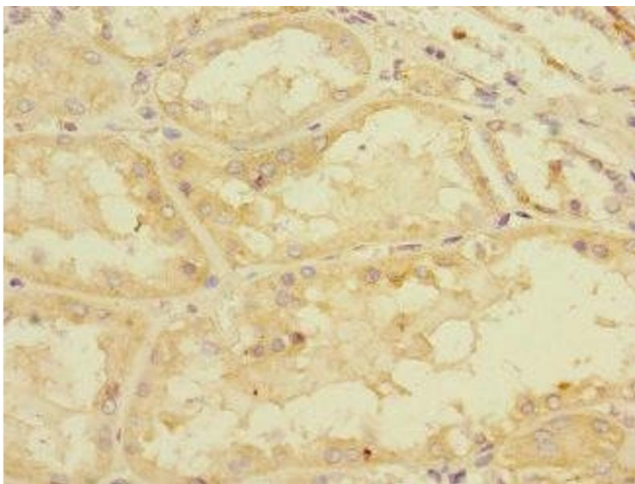
Preservative: Sodium azide

Precaution of Use: This product contains Sodium azide: a POISONOUS AND HAZARDOUS SUBSTANCE which should be handled by trained staff only.

Storage: -20 °C,-80 °C

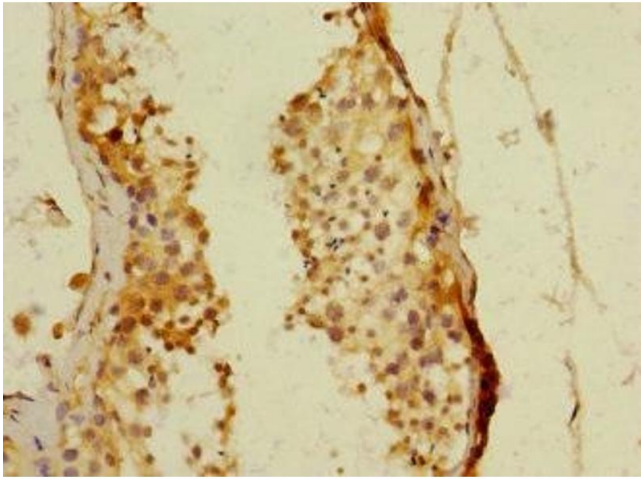
Storage Comment: Upon receipt, store at -20°C or -80°C. Avoid repeated freeze.

Images



Immunohistochemistry

Image 1. Immunohistochemistry of paraffin-embedded human kidney tissue using ABIN7160526 at dilution of 1:100



Immunohistochemistry

Image 2. Immunohistochemistry of paraffin-embedded human testis tissue using ABIN7160526 at dilution of 1:100