

Datasheet for ABIN7160551
anti-MYL2 antibody (AA 8-164)[Go to Product page](#)

2 Images

Overview

Quantity:	100 µg
Target:	MYL2
Binding Specificity:	AA 8-164
Reactivity:	Human
Host:	Rabbit
Clonality:	Polyclonal
Conjugate:	This MYL2 antibody is un-conjugated
Application:	ELISA, Immunohistochemistry (IHC), Immunofluorescence (IF)

Product Details

Immunogen:	Recombinant Human Myosin regulatory light chain 2, ventricular/cardiac muscle isoform protein (8-164AA)
Isotype:	IgG
Cross-Reactivity:	Human
Purification:	>95%, Protein G purified

Target Details

Target:	MYL2
Alternative Name:	MYL2 (MYL2 Products)
Background:	Background: Contractile protein that plays a role in heart development and function. Following

Target Details

phosphorylation, plays a role in cross-bridge cycling kinetics and cardiac muscle contraction by increasing myosin lever arm stiffness and promoting myosin head diffusion, as a consequence of the increase in maximum contraction force and calcium sensitivity of contraction force.

These events altogether slow down myosin kinetics and prolong duty cycle resulting in accumulated myosins being cooperatively recruited to actin binding sites to sustain thin filament activation as a means to fine-tune myofilament calcium sensitivity to force. During cardiogenesis plays an early role in cardiac contractility by promoting cardiac myofibril assembly.

Aliases: Cardiac myosin light chain-2 antibody, Cardiac ventricular myosin light chain 2 antibody, CMH10 antibody, MLC 2v antibody, MLC-2 antibody, MLC-2v antibody, MLC2 antibody, MLRV_HUMAN antibody, MYL 2 antibody, MYL2 antibody, Myosin light chain 2 regulatory cardiac slow antibody, Myosin light polypeptide 2 regulatory cardiac slow antibody, Myosin regulatory light chain 2 antibody, Myosin regulatory light chain 2 ventricular/cardiac muscle isoform antibody, Regulatory light chain of myosin antibody, RLC of myosin antibody, Slow cardiac myosin regulatory light chain 2 antibody, ventricular/cardiac muscle isoform antibody

UniProt: [P10916](#)

Pathways: [Myometrial Relaxation and Contraction](#)

Application Details

Application Notes: Recommended dilution: IHC:1:20-1:200, IF:1:50-1:200,

Restrictions: For Research Use only

Handling

Format: Liquid

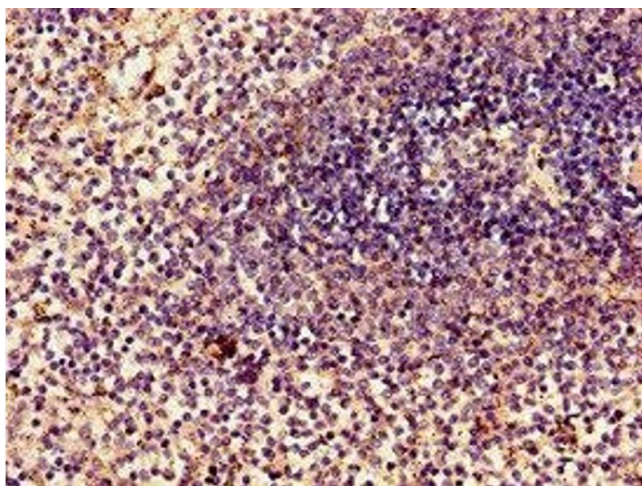
Buffer: Preservative: 0.03 % Proclin 300
Constituents: 50 % Glycerol, 0.01M PBS, PH 7.4

Preservative: ProClin

Precaution of Use: This product contains ProClin: a POISONOUS AND HAZARDOUS SUBSTANCE which should be handled by trained staff only.

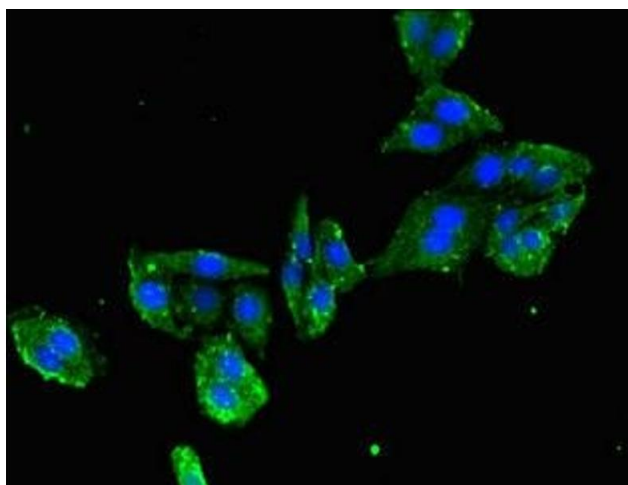
Storage: -20 °C,-80 °C

Storage Comment: Upon receipt, store at -20°C or -80°C. Avoid repeated freeze.



Immunohistochemistry

Image 1. Immunohistochemistry of paraffin-embedded human spleen tissue using ABIN7160551 at dilution of 1:100



Immunofluorescence

Image 2. Immunofluorescent analysis of HepG2 cells using ABIN7160551 at dilution of 1:100 and Alexa Fluor 488-conjugated AffiniPure Goat Anti-Rabbit IgG(H+L)