

Datasheet for ABIN7160588
anti-MYH7 antibody (AA 1802-1915)

2 Images

[Go to Product page](#)

Overview

Quantity:	100 µg
Target:	MYH7
Binding Specificity:	AA 1802-1915
Reactivity:	Human
Host:	Rabbit
Clonality:	Polyclonal
Conjugate:	This MYH7 antibody is un-conjugated
Application:	Immunohistochemistry (IHC), ELISA

Product Details

Immunogen:	Recombinant Human Myosin-7 protein (1802-1915AA)
Isotype:	IgG
Cross-Reactivity:	Human
Purification:	>95%, Protein G purified

Target Details

Target:	MYH7
Alternative Name:	MYH7 (MYH7 Products)
Background:	Background: Muscle contraction. Aliases: Beta myosin heavy chain antibody, cardiac muscle beta isoform antibody, CMD1S

Target Details

antibody, CMH1 antibody, MPD1 antibody, MYH7 antibody, MYH7_HUMAN antibody, Myhc slow antibody, MyHC-beta antibody, MyHC-slow antibody, MYHCB antibody, Myopathy, distal 1 antibody, Myosin heavy chain (AA 1-96) antibody, Myosin heavy chain 7 antibody, Myosin heavy chain antibody, Myosin heavy chain slow isoform antibody, Myosin heavy chain, cardiac muscle beta isoform antibody, Myosin, heavy chain 7, cardiac muscle, beta antibody, Myosin, heavy polypeptide 7, cardiac muscle, beta antibody, Myosin-7 antibody, Rhabdomyosarcoma antigen MU RMS 40.7A antibody, SPMD antibody, SPMM antibody

UniProt: [P12883](#)

Application Details

Application Notes: Recommended dilution: IHC:1:500-1:1000,

Restrictions: For Research Use only

Handling

Format: Liquid

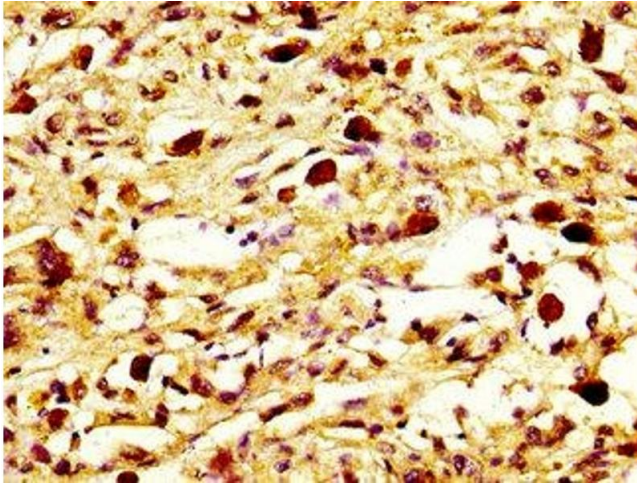
Buffer: Preservative: 0.03 % Proclin 300
Constituents: 50 % Glycerol, 0.01M PBS, pH 7.4

Preservative: ProClin

Precaution of Use: This product contains ProClin: a POISONOUS AND HAZARDOUS SUBSTANCE which should be handled by trained staff only.

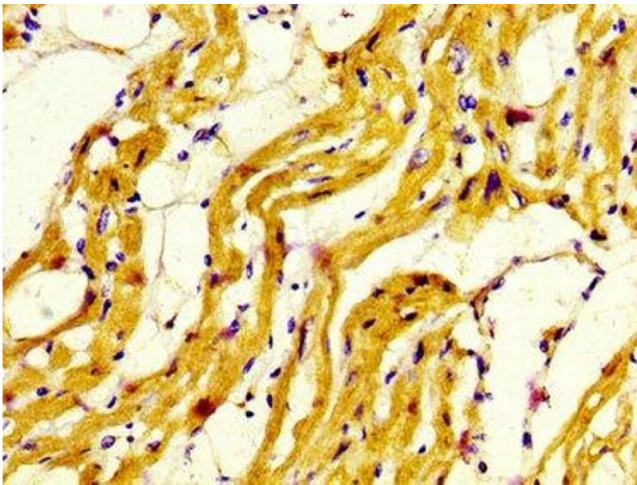
Storage: -20 °C, -80 °C

Storage Comment: Upon receipt, store at -20°C or -80°C. Avoid repeated freeze.



Immunohistochemistry

Image 1. IHC image of ABIN7160588 diluted at 1:800 and staining in paraffin-embedded human melanoma performed on a Leica Bond™ system. After dewaxing and hydration, antigen retrieval was mediated by high pressure in a citrate buffer (pH 6.0). Section was blocked with 10% normal goat serum 30min at RT. Then primary antibody (1% BSA) was incubated at 4°C overnight. The primary is detected by a biotinylated secondary antibody and visualized using an HRP conjugated SP system.



Immunohistochemistry

Image 2. IHC image of ABIN7160588 diluted at 1:800 and staining in paraffin-embedded human heart tissue performed on a Leica Bond™ system. After dewaxing and hydration, antigen retrieval was mediated by high pressure in a citrate buffer (pH 6.0). Section was blocked with 10% normal goat serum 30min at RT. Then primary antibody (1% BSA) was incubated at 4°C overnight. The primary is detected by a biotinylated secondary antibody and visualized using an HRP conjugated SP system.