

Datasheet for ABIN7160609
anti-MYBPC1 antibody (AA 618-779)

3 Images

[Go to Product page](#)

Overview

Quantity:	100 µg
Target:	MYBPC1
Binding Specificity:	AA 618-779
Reactivity:	Human
Host:	Rabbit
Clonality:	Polyclonal
Conjugate:	This MYBPC1 antibody is un-conjugated
Application:	ELISA, Immunohistochemistry (IHC), Immunofluorescence (IF)

Product Details

Immunogen:	Recombinant Human Myosin-binding protein C, slow-type protein (618-779AA)
Isotype:	IgG
Cross-Reactivity:	Human
Purification:	>95%, Protein G purified

Target Details

Target:	MYBPC1
Alternative Name:	MYBPC1 (MYBPC1 Products)
Background:	Background: Thick filament-associated protein located in the crossbridge region of vertebrate striated muscle a bands. In vitro it binds MHC, F-actin and native thin filaments, and modifies

Target Details

the activity of actin-activated myosin ATPase. It may modulate muscle contraction or may play a more structural role.

Aliases: C protein, skeletal muscle slow isoform antibody, C-protein antibody, MYBPC1 antibody, MYBPCC antibody, MYBPCS antibody, Myosin binding protein C, slow type antibody, Myosin-binding protein C antibody, MYPC1_HUMAN antibody, skeletal muscle C protein antibody, skeletal muscle slow isoform antibody, Slow MyBP C antibody, Slow MyBP-C antibody, slow-type antibody

UniProt: [Q00872](#)

Application Details

Application Notes: Recommended dilution: IHC:1:500-1:1000, IF:1:200-1:500,

Restrictions: For Research Use only

Handling

Format: Liquid

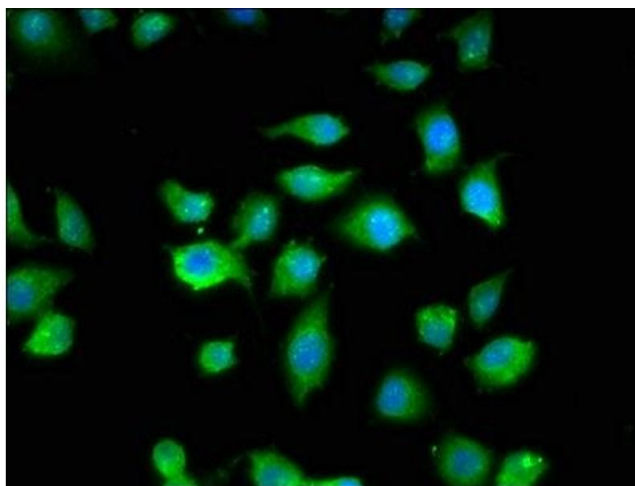
Buffer: Preservative: 0.03 % Proclin 300
Constituents: 50 % Glycerol, 0.01M PBS, pH 7.4

Preservative: ProClin

Precaution of Use: This product contains ProClin: a POISONOUS AND HAZARDOUS SUBSTANCE which should be handled by trained staff only.

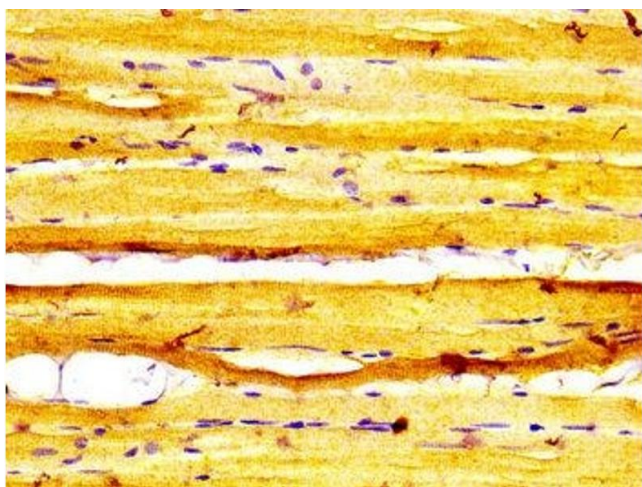
Storage: -20 °C,-80 °C

Storage Comment: Upon receipt, store at -20°C or -80°C. Avoid repeated freeze.



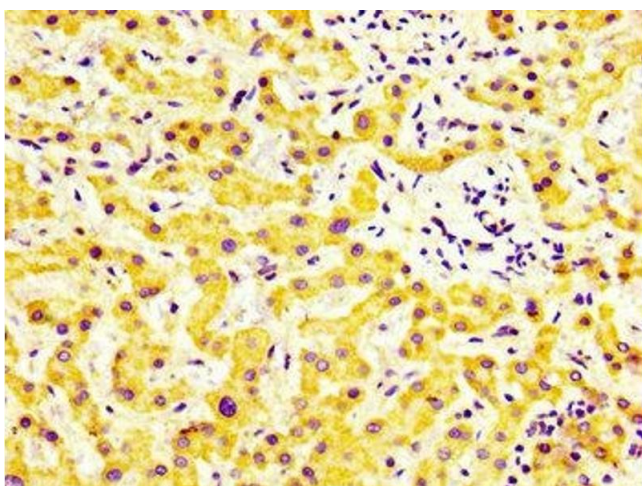
Immunofluorescence

Image 1. Immunofluorescence staining of A549 cells with ABIN7160609 at 1:200, counter-stained with DAPI. The cells were fixed in 4% formaldehyde, permeabilized using 0.2% Triton X-100 and blocked in 10% normal Goat Serum. The cells were then incubated with the antibody overnight at 4°C. The secondary antibody was Alexa Fluor 488-conjugated AffiniPure Goat Anti-Rabbit IgG(H+L).



Immunohistochemistry

Image 2. IHC image of ABIN7160609 diluted at 1:600 and staining in paraffin-embedded human skeletal muscle tissue performed on a Leica Bond™ system. After dewaxing and hydration, antigen retrieval was mediated by high pressure in a citrate buffer (pH 6.0). Section was blocked with 10% normal goat serum 30min at RT. Then primary antibody (1% BSA) was incubated at 4°C overnight. The primary is detected by a biotinylated secondary antibody and visualized using an HRP conjugated SP system.



Immunohistochemistry

Image 3. IHC image of ABIN7160609 diluted at 1:600 and staining in paraffin-embedded human liver cancer performed on a Leica Bond™ system. After dewaxing and hydration, antigen retrieval was mediated by high pressure in a citrate buffer (pH 6.0). Section was blocked with 10% normal goat serum 30min at RT. Then primary antibody (1% BSA) was incubated at 4°C overnight. The primary is detected by a biotinylated secondary antibody and visualized using an HRP conjugated SP system.