

Datasheet for ABIN7160633
anti-MTMR12 antibody (AA 188-318)[Go to Product page](#)

1 Image

Overview

Quantity:	100 µg
Target:	MTMR12
Binding Specificity:	AA 188-318
Reactivity:	Human
Host:	Rabbit
Clonality:	Polyclonal
Conjugate:	This MTMR12 antibody is un-conjugated
Application:	ELISA, Immunofluorescence (IF)

Product Details

Immunogen:	Recombinant Human Myotubularin-related protein 12 protein (188-318AA)
Isotype:	IgG
Cross-Reactivity:	Human
Purification:	>95%, Protein G purified

Target Details

Target:	MTMR12
Alternative Name:	MTMR12 (MTMR12 Products)
Background:	Background: Catalytically inactive phosphatase that plays a role as an adapter for the phosphatase myotubularin to regulate myotubularin intracellular location.

Target Details

Aliases: MTMR12 antibody, KIAA1682 antibody, PIP3AP antibody, Myotubularin-related protein 12 antibody, Inactive phosphatidylinositol 3-phosphatase 12 antibody, Phosphatidylinositol 3 phosphate 3-phosphatase adapter subunit antibody, 3-PAP antibody, 3-phosphatase adapter protein antibody

UniProt: [Q9C0I1](#)

Application Details

Application Notes: Recommended dilution: IF:1:20-1:200,

Restrictions: For Research Use only

Handling

Format: Liquid

Buffer: Preservative: 0.03 % Proclin 300
Constituents: 50 % Glycerol, 0.01M PBS, pH 7.4

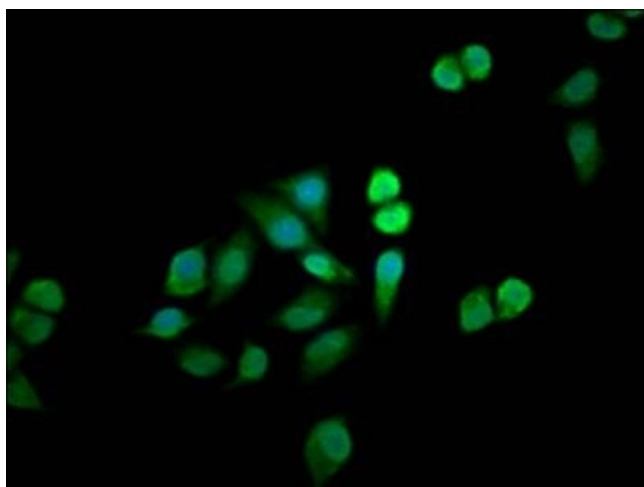
Preservative: ProClin

Precaution of Use: This product contains ProClin: a POISONOUS AND HAZARDOUS SUBSTANCE which should be handled by trained staff only.

Storage: -20 °C, -80 °C

Storage Comment: Upon receipt, store at -20°C or -80°C. Avoid repeated freeze.

Images



Immunofluorescence

Image 1. Immunofluorescence staining of HeLa cells with ABIN7160633 at 1:33, counter-stained with DAPI. The cells were fixed in 4% formaldehyde, permeabilized using 0.2% Triton X-100 and blocked in 10% normal Goat Serum. The cells were then incubated with the antibody overnight at 4°C. The secondary antibody was Alexa Fluor 488-conjugated AffiniPure Goat Anti-Rabbit IgG(H+L).