

Datasheet for ABIN7160637

anti-SET Binding Factor 2 antibody (AA 1585-1813)[Go to Product page](#)**3** Images

Overview

Quantity:	100 µg
Target:	SET Binding Factor 2 (SBF2)
Binding Specificity:	AA 1585-1813
Reactivity:	Human
Host:	Rabbit
Clonality:	Polyclonal
Conjugate:	This SET Binding Factor 2 antibody is un-conjugated
Application:	ELISA, Immunohistochemistry (IHC), Immunofluorescence (IF)

Product Details

Immunogen:	Recombinant Human Myotubularin-related protein 13 protein (1585-1813AA)
Isotype:	IgG
Cross-Reactivity:	Human
Purification:	>95%, Protein G purified

Target Details

Target:	SET Binding Factor 2 (SBF2)
Alternative Name:	SBF2 (SBF2 Products)
Background:	Background: Guanine nucleotide exchange factor (GEF) which may activate RAB28. Promotes the exchange of GDP to GTP, converting inactive GDP-bound Rab proteins into their active GTP-

Target Details

bound form.

Aliases: SBF2 antibody, CMT4B2 antibody, KIAA1766 antibody, MTMR13 antibody, Myotubularin-related protein 13 antibody, Inactive phosphatidylinositol 3-phosphatase 13 antibody, SET-binding factor 2 antibody

UniProt: [Q86WG5](#)

Application Details

Application Notes: Recommended dilution: IHC:1:20-1:200, IF:1:50-1:200,

Restrictions: For Research Use only

Handling

Format: Liquid

Buffer: Preservative: 0.03 % Proclin 300
Constituents: 50 % Glycerol, 0.01M PBS, PH 7.4

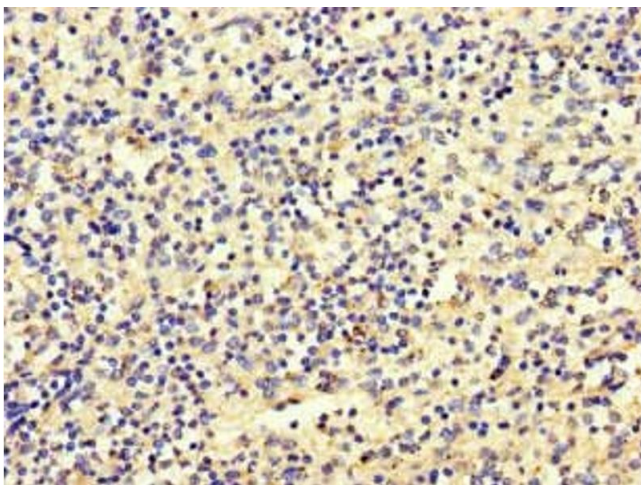
Preservative: ProClin

Precaution of Use: This product contains ProClin: a POISONOUS AND HAZARDOUS SUBSTANCE which should be handled by trained staff only.

Storage: -20 °C,-80 °C

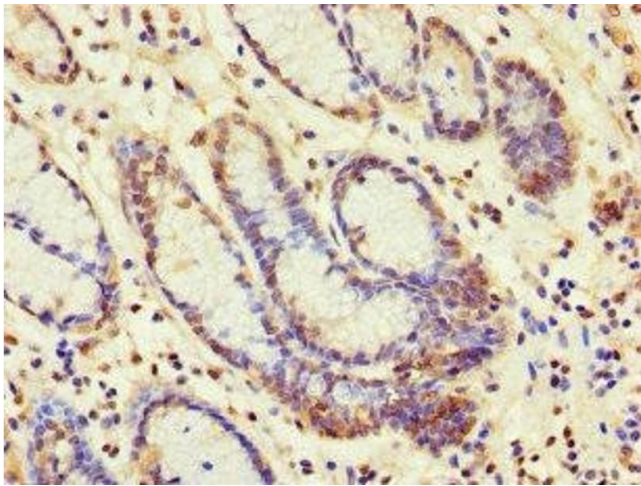
Storage Comment: Upon receipt, store at -20°C or -80°C. Avoid repeated freeze.

Images



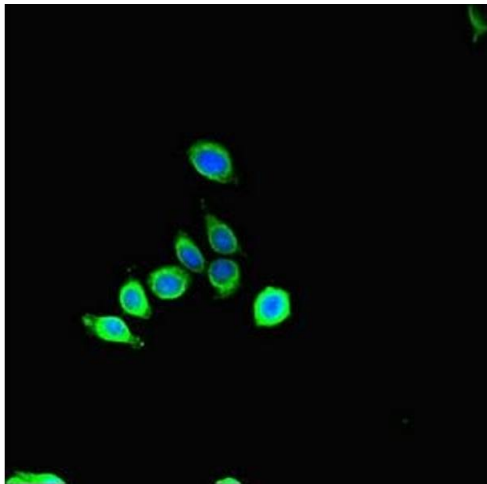
Immunohistochemistry

Image 1. Immunohistochemistry of paraffin-embedded human spleen tissue using ABIN7160637 at dilution of 1:100



Immunohistochemistry

Image 2. Immunohistochemistry of paraffin-embedded human gastric cancer using ABIN7160637 at dilution of 1:100



Immunofluorescence

Image 3. Immunofluorescent analysis of HepG2 cells using ABIN7160637 at dilution of 1:100 and Alexa Fluor 488-conjugated AffiniPure Goat Anti-Rabbit IgG(H+L)