



[Go to Product page](#)

Datasheet for ABIN7160641
anti-MTMR14 antibody (AA 1-280)

2 Images

Overview

Quantity:	100 µL
Target:	MTMR14
Binding Specificity:	AA 1-280
Reactivity:	Human
Host:	Rabbit
Clonality:	Polyclonal
Conjugate:	This MTMR14 antibody is un-conjugated
Application:	ELISA, Immunohistochemistry (IHC)

Product Details

Immunogen:	Recombinant Human Myotubularin-related protein 14 protein (1-280AA)
Isotype:	IgG
Cross-Reactivity:	Human
Purification:	Antigen Affinity Purified

Target Details

Target:	MTMR14
Alternative Name:	MTMR14 (MTMR14 Products)
Background:	Background: Lipid phosphatase which efficiently dephosphorylates phosphatidylinositol 3-phosphate (PtdIns3P) and PtdIns(3,5)P2, inactive toward PtdIns4P, PtdIns(3,4)P2, PtdIns(4,5)P2

Target Details

and PtdIns(3,4,5)P3.

Aliases: C3orf29 antibody, Egg derived tyrosine phosphatase homolog antibody, FLJ11546 antibody, FLJ22405 antibody, FLJ46453 antibody, FLJ90311 antibody, HCV NS5A transactivated protein 4 splice variant A binding protein 1 antibody, HCV NS5A-transactivated protein 4 splice variant A-binding protein 1 antibody, hEDTP antibody, hJumpy antibody, jumpy antibody, MTMR 14 antibody, MTMR14 antibody, MTMRE_HUMAN antibody, Myotubularin related protein 14 antibody, Myotubularin-related protein 14 antibody, NS5ATP4ABP1 antibody

UniProt: [Q8NCE2](#)

Pathways: [Inositol Metabolic Process](#)

Application Details

Application Notes: Recommended dilution: IHC:1:20-1:200,

Restrictions: For Research Use only

Handling

Format: Liquid

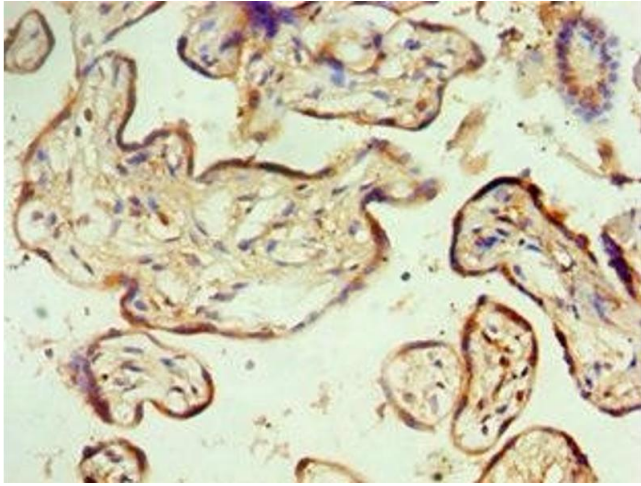
Buffer: PBS with 0.02 % sodium azide, 50 % glycerol, pH 7.3.

Preservative: Sodium azide

Precaution of Use: This product contains Sodium azide: a POISONOUS AND HAZARDOUS SUBSTANCE which should be handled by trained staff only.

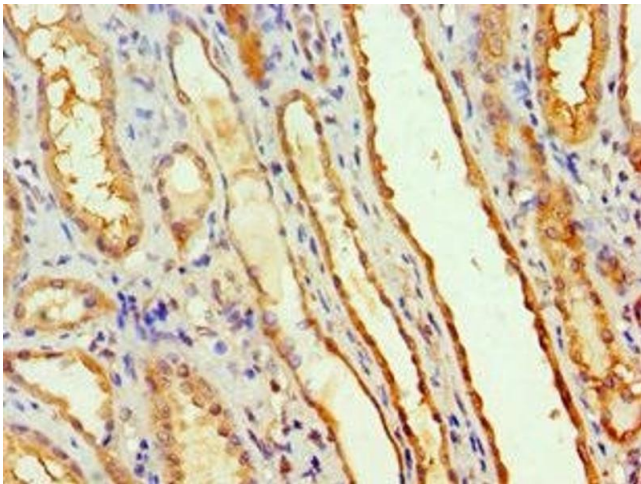
Storage: -20 °C,-80 °C

Storage Comment: Upon receipt, store at -20°C or -80°C. Avoid repeated freeze.



Immunohistochemistry

Image 1. Immunohistochemistry of paraffin-embedded human placenta tissue using ABIN7160641 at dilution of 1:100



Immunohistochemistry

Image 2. Immunohistochemistry of paraffin-embedded human kidney tissue using ABIN7160641 at dilution of 1:100