



[Go to Product page](#)

Datasheet for ABIN7160703

## anti-PGLYRP2 antibody (AA 22-576)

### 2 Images

#### Overview

Quantity:	100 µg
Target:	PGLYRP2
Binding Specificity:	AA 22-576
Reactivity:	Human
Host:	Rabbit
Clonality:	Polyclonal
Conjugate:	This PGLYRP2 antibody is un-conjugated
Application:	ELISA, Immunohistochemistry (IHC)

#### Product Details

Immunogen:	Recombinant Human N-acetylmuramoyl-L-alanine amidase protein (22-576AA)
Isotype:	IgG
Cross-Reactivity:	Human
Purification:	>95%, Protein G purified

#### Target Details

Target:	PGLYRP2
Alternative Name:	PGLYRP2 ( <a href="#">PGLYRP2 Products</a> )
Background:	Background: May play a scavenger role by digesting biologically active peptidoglycan (PGN) into biologically inactive fragments. Has no direct bacteriolytic activity.

## Target Details

Aliases: PGLYRP2 antibody, PGLYRPL antibody, PGRPL antibody, UNQ3103/PRO10102 antibody, N-acetylmuramoyl-L-alanine amidase antibody, EC 3.5.1.28 antibody, Peptidoglycan recognition protein 2 antibody, Peptidoglycan recognition protein long antibody, PGRP-L antibody

UniProt: [Q96PD5](#)

Pathways: [Activation of Innate immune Response](#), [Glycosaminoglycan Metabolic Process](#)

## Application Details

Application Notes: Recommended dilution: IHC:1:20-1:200,

Restrictions: For Research Use only

## Handling

Format: Liquid

Buffer: Preservative: 0.03 % Proclin 300  
Constituents: 50 % Glycerol, 0.01M PBS, PH 7.4

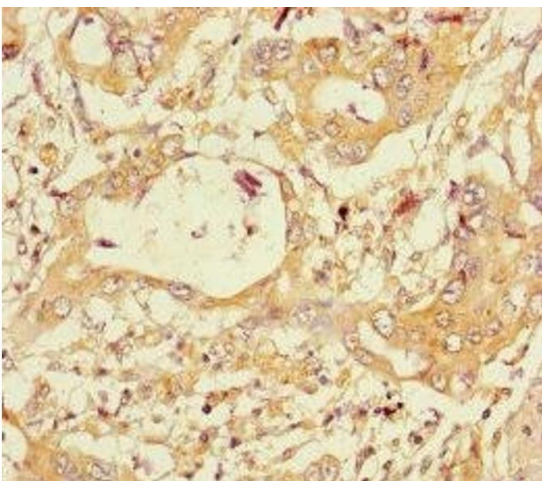
Preservative: ProClin

Precaution of Use: This product contains ProClin: a POISONOUS AND HAZARDOUS SUBSTANCE which should be handled by trained staff only.

Storage: -20 °C,-80 °C

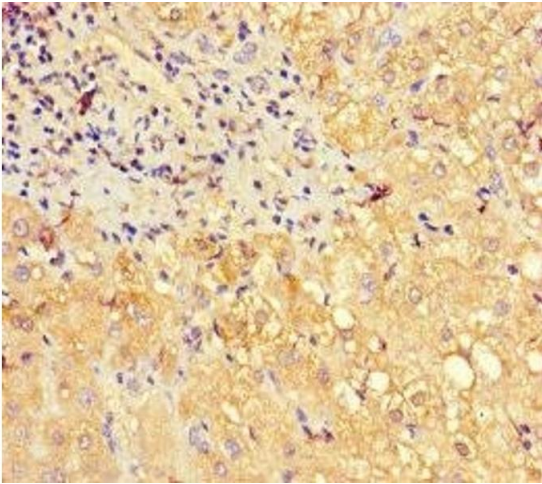
Storage Comment: Upon receipt, store at -20°C or -80°C. Avoid repeated freeze.

## Images



### Immunohistochemistry

**Image 1.** Immunohistochemistry of paraffin-embedded human pancreatic cancer using ABIN7160703 at dilution of 1:100



### Immunohistochemistry

**Image 2.** Immunohistochemistry of paraffin-embedded human liver cancer using ABIN7160703 at dilution of 1:100