

Datasheet for ABIN7160712
anti-NAT8 antibody (AA 64-227)[Go to Product page](#)

3 Images

Overview

Quantity:	100 µg
Target:	NAT8
Binding Specificity:	AA 64-227
Reactivity:	Human
Host:	Rabbit
Clonality:	Polyclonal
Conjugate:	This NAT8 antibody is un-conjugated
Application:	Immunohistochemistry (IHC), ELISA, Immunofluorescence (IF)

Product Details

Immunogen:	Recombinant Human N-acetyltransferase 8 protein (64-227AA)
Isotype:	IgG
Cross-Reactivity:	Human
Purification:	>95%, Protein G purified

Target Details

Target:	NAT8
Alternative Name:	NAT8 (NAT8 Products)
Background:	Background: Acetylates the free alpha-amino group of cysteine S-conjugates to form mercapturic acids (PubMed:20392701). This is the final step in a major route for detoxification

Target Details

of a wide variety of reactive electrophiles which starts with their incorporation into glutathione S-conjugates. The glutathione S-conjugates are then further processed into cysteine S-conjugates and finally mercapturic acids which are water soluble and can be readily excreted in urine or bile. Alternatively, may have a lysine N-acetyltransferase activity catalyzing peptidyl-lysine N6-acetylation of various proteins. Thereby, may regulate apoptosis through the acetylation and the regulation of the expression of PROM1 (PubMed:24556617). May also regulate amyloid beta-peptide secretion through acetylation of BACE1 and the regulation of its expression in neurons (PubMed:19011241).

Aliases: acetyltransferase 2 antibody, ATase2 antibody, Camello, Xenopus, homolog of, 1 antibody, Camello-like protein 1 antibody, CML1 antibody, cysteinyl-conjugate N-acetyltransferase antibody, GLA antibody, Hcm11 antibody, kidney- and liver-specific gene product antibody, N-acetyltransferase 8 (camello like) antibody, N-acetyltransferase 8 (GCN5-related, putative) antibody, N-acetyltransferase 8 antibody, NAT8 antibody, NAT8_HUMAN antibody, Probable N-acetyltransferase 8 antibody, TSC501 antibody, TSC510 antibody

UniProt: [Q9UHE5](#)

Application Details

Application Notes: Recommended dilution: IHC:1:20-1:200, IF:1:50-1:200,

Restrictions: For Research Use only

Handling

Format: Liquid

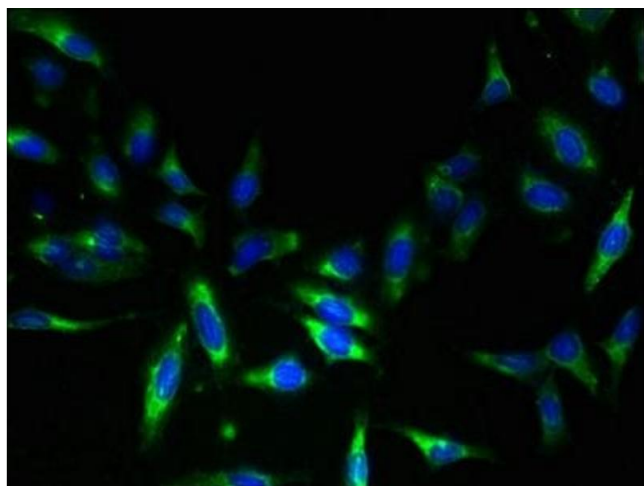
Buffer: Preservative: 0.03 % Proclin 300
Constituents: 50 % Glycerol, 0.01M PBS, PH 7.4

Preservative: ProClin

Precaution of Use: This product contains ProClin: a POISONOUS AND HAZARDOUS SUBSTANCE which should be handled by trained staff only.

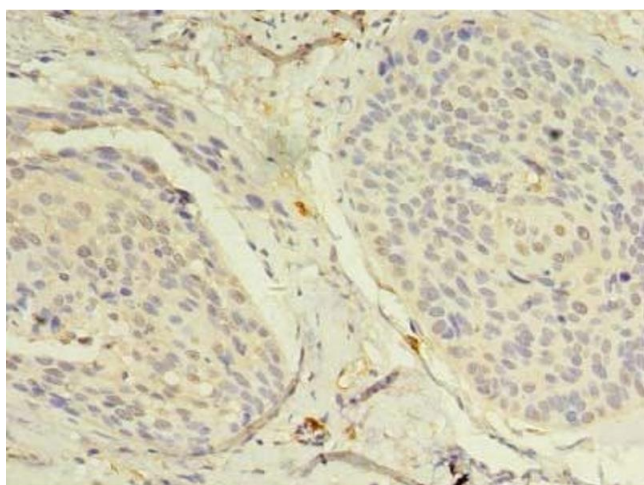
Storage: -20 °C,-80 °C

Storage Comment: Upon receipt, store at -20°C or -80°C. Avoid repeated freeze.



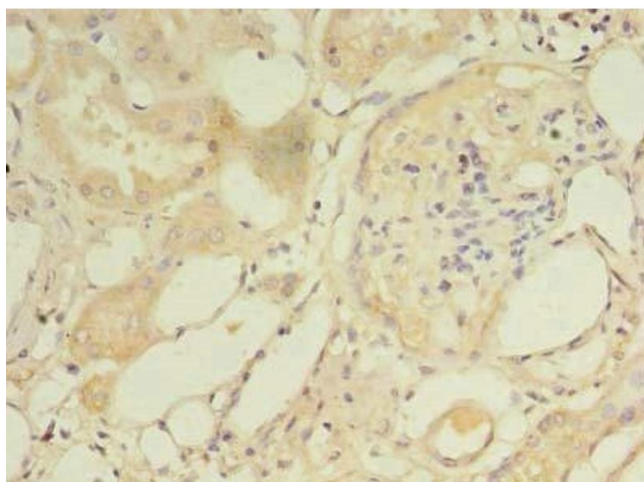
Immunofluorescence

Image 1. Immunofluorescent analysis of HeLa cells using ABIN7160712 at dilution of 1:100 and Alexa Fluor 488-conjugated AffiniPure Goat Anti-Rabbit IgG(H+L)



Immunohistochemistry

Image 2. Immunohistochemistry of paraffin-embedded human cervical cancer using ABIN7160712 at dilution of 1:100



Immunohistochemistry

Image 3. Immunohistochemistry of paraffin-embedded human kidney tissue using ABIN7160712 at dilution of 1:100