



[Go to Product page](#)

Datasheet for ABIN7160732  
**anti-PTPDC1 antibody (AA 161-235)**

3 Images

### Overview

Quantity:	100 µL
Target:	PTPDC1
Binding Specificity:	AA 161-235
Reactivity:	Human
Host:	Rabbit
Clonality:	Polyclonal
Conjugate:	This PTPDC1 antibody is un-conjugated
Application:	Western Blotting (WB), Immunohistochemistry (IHC), ELISA

### Product Details

Immunogen:	Recombinant Human N-alpha-acetyltransferase 10 protein (161-235AA)
Isotype:	IgG
Cross-Reactivity:	Human
Purification:	Antigen Affinity Purified

### Target Details

Target:	PTPDC1
Alternative Name:	NAA1 ( <a href="#">PTPDC1 Products</a> )
Background:	Background: Catalytic subunit of the N-terminal acetyltransferase A (Nata) complex which displays alpha (N-terminal) acetyltransferase activity. The NAT activity may be important for

## Target Details

---

vascular, hematopoietic and neuronal growth and development. Without NAA15, displays epsilon (internal) acetyltransferase activity towards HIF1A, thereby promoting its degradation. Represses MYLK kinase activity by acetylation, and thus represses tumor cell migration. Acetylates, and stabilizes TSC2, thereby repressing mTOR activity and suppressing cancer development.

Aliases: Alpha N acetyltransferase 1A antibody, ARD1 antibody, ARD1 homolog N acetyltransferase (*S. cerevisiae*) antibody, ARD1 homolog A N acetyltransferase (*S. cerevisiae*) antibody, ARD1 homolog A N acetyltransferase antibody, ARD1A antibody, DXS707 antibody, MGC71248 antibody, N acetyltransferase ARD1, human homolog of antibody, N alpha acetyltransferase 10 NatA catalytic subunit antibody, N terminal acetyltransferase complex ARD1 subunit homolog A antibody, N(alpha) acetyltransferase 10 NatA catalytic subunit antibody, N-alpha-acetyltransferase 10 antibody, N-terminal acetyltransferase complex ARD1 subunit homolog A antibody, Naa10 antibody, NAA10\_HUMAN antibody, NatA catalytic subunit antibody, TE2 antibody

---

UniProt: [P41227](#)

## Application Details

---

Application Notes: Recommended dilution: WB:1:500-1:5000, IHC:1:20-1:200,

Restrictions: For Research Use only

## Handling

---

Format: Liquid

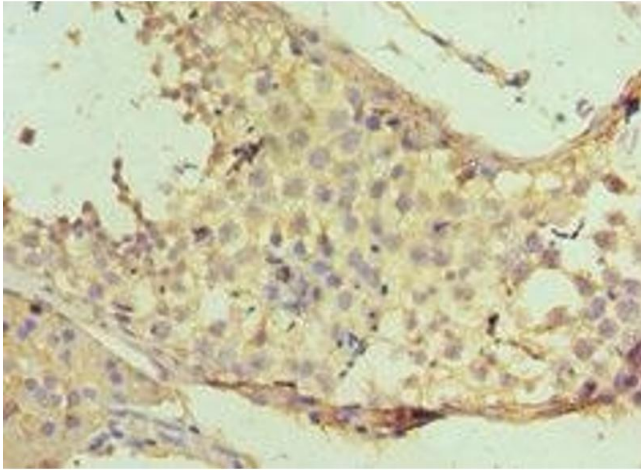
Buffer: PBS with 0.02 % sodium azide, 50 % glycerol, pH 7.3.

Preservative: Sodium azide

Precaution of Use: This product contains Sodium azide: a POISONOUS AND HAZARDOUS SUBSTANCE which should be handled by trained staff only.

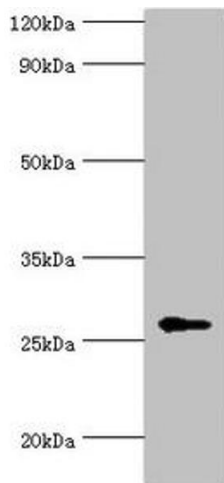
Storage: -20 °C,-80 °C

Storage Comment: Upon receipt, store at -20°C or -80°C. Avoid repeated freeze.



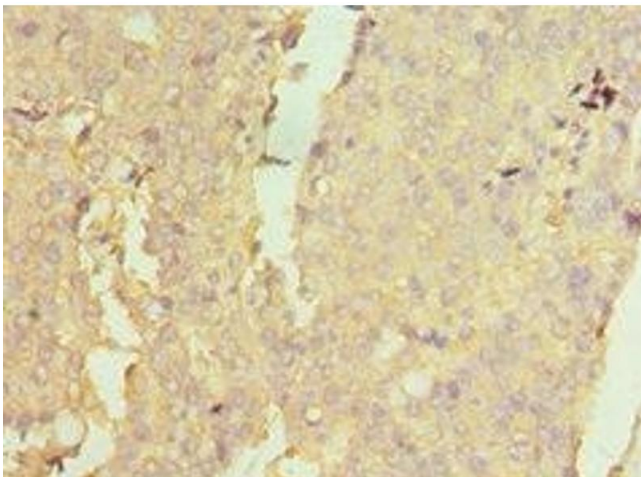
### Immunohistochemistry

**Image 1.** Immunohistochemistry of paraffin-embedded human testis tissue using ABIN7160732 at dilution of 1:100



### Western Blotting

**Image 2.** Western blot All lanes: N-alpha-acetyltransferase 10 antibody at 5 µg/mL + HeLa whole cell lysate Secondary Goat polyclonal to rabbit IgG at 1/10000 dilution Predicted band size: 27, 25 kDa Observed band size: 27 kDa



### Immunohistochemistry

**Image 3.** Immunohistochemistry of paraffin-embedded human colon cancer using ABIN7160732 at dilution of 1:100