

Datasheet for ABIN7160740  
**anti-NAA38 antibody (AA 2-173)**[Go to Product page](#)

## 3 Images

## Overview

Quantity:	100 µg
Target:	NAA38
Binding Specificity:	AA 2-173
Reactivity:	Human
Host:	Rabbit
Clonality:	Polyclonal
Conjugate:	This NAA38 antibody is un-conjugated
Application:	ELISA, Western Blotting (WB), Immunohistochemistry (IHC), Immunofluorescence (IF)

## Product Details

Immunogen:	Recombinant Human N-alpha-acetyltransferase 38, NatC auxiliary subunit protein (2-173AA)
Isotype:	IgG
Cross-Reactivity:	Human, Mouse
Purification:	>95%, Protein G purified

## Target Details

Target:	NAA38
Alternative Name:	NAA38 ( <a href="#">NAA38 Products</a> )
Background:	Background: Auxillary component of the N-terminal acetyltransferase C (NatC) complex which catalyzes acetylation of N-terminal methionine residues.

## Target Details

Aliases: LSM domain-containing protein 1 antibody, Ismd1 antibody, LSMD1\_HUMAN antibody, MAK31 antibody, Phosphonoformate immuno-associated protein 2 antibody

UniProt: [Q9BRA0](#)

## Application Details

Application Notes: Recommended dilution: WB:1:500-1:5000, IHC:1:200-1:500, IF:1:50-1:200,

Restrictions: For Research Use only

## Handling

Format: Liquid

Buffer: Preservative: 0.03 % Proclin 300  
Constituents: 50 % Glycerol, 0.01M PBS, PH 7.4

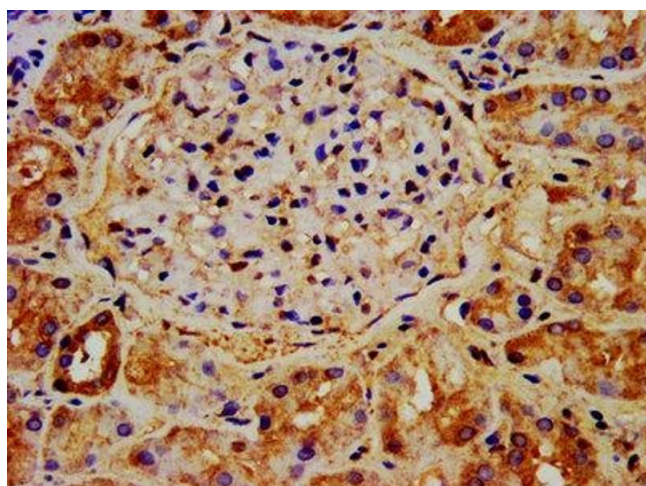
Preservative: ProClin

Precaution of Use: This product contains ProClin: a POISONOUS AND HAZARDOUS SUBSTANCE which should be handled by trained staff only.

Storage: -20 °C,-80 °C

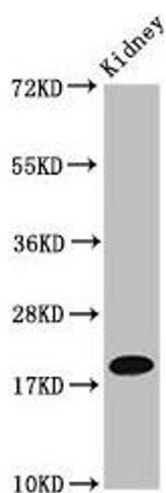
Storage Comment: Upon receipt, store at -20°C or -80°C. Avoid repeated freeze.

## Images



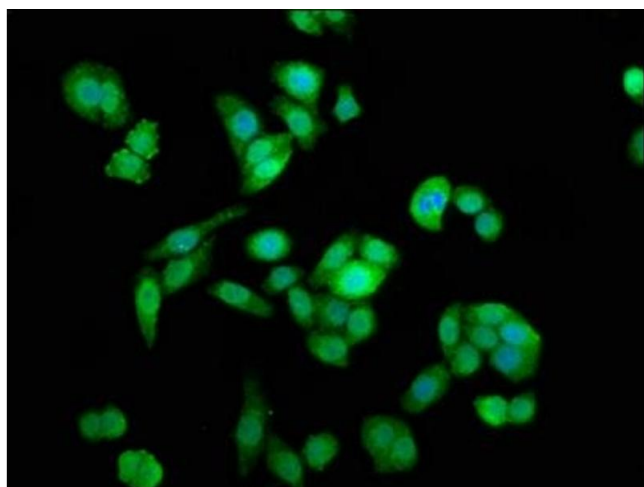
### Immunohistochemistry

**Image 1.** IHC image of ABIN7160740 diluted at 1:400 and staining in paraffin-embedded human kidney tissue performed on a Leica Bond™ system. After dewaxing and hydration, antigen retrieval was mediated by high pressure in a citrate buffer (pH 6.0). Section was blocked with 10% normal goat serum 30min at RT. Then primary antibody (1% BSA) was incubated at 4°C overnight. The primary is detected by a biotinylated secondary antibody and visualized using an HRP conjugated SP system.



### Western Blotting

**Image 2.** Western Blot Positive WB detected in: Mouse kidney tissue All lanes: NAA38 antibody at 4 µg/mL Secondary Goat polyclonal to rabbit IgG at 1/50000 dilution Predicted band size: 14, 19 kDa Observed band size: 19 kDa



### Immunofluorescence

**Image 3.** Immunofluorescence staining of PC-3 cells with ABIN7160740 at 1:133, counter-stained with DAPI. The cells were fixed in 4% formaldehyde, permeabilized using 0.2% Triton X-100 and blocked in 10% normal Goat Serum. The cells were then incubated with the antibody overnight at 4°C. The secondary antibody was Alexa Fluor 488-conjugated AffiniPure Goat Anti-Rabbit IgG(H+L).