



[Go to Product page](#)

Datasheet for ABIN7160766
anti-SETD8 antibody (AA 136-258)

1 Image

Overview

Quantity:	100 µg
Target:	SETD8
Binding Specificity:	AA 136-258
Reactivity:	Human
Host:	Rabbit
Clonality:	Polyclonal
Conjugate:	This SETD8 antibody is un-conjugated
Application:	ELISA, Immunohistochemistry (IHC)

Product Details

Immunogen:	Recombinant Human N-lysine methyltransferase KMT5A protein (136-258AA)
Isotype:	IgG
Cross-Reactivity:	Human
Purification:	>95%, Protein G purified

Target Details

Target:	SETD8
Alternative Name:	KMT5A (SETD8 Products)
Background:	Background: Protein-lysine N-methyltransferase that monomethylates both histones and non-histone proteins. Specifically monomethylates '\\Lys-20\\' of histone H4 (H4K20me1).

Target Details

H4K20me1 is enriched during mitosis and represents a specific tag for epigenetic transcriptional repression. Mainly functions in euchromatin regions, thereby playing a central role in the silencing of euchromatic genes. Required for cell proliferation, probably by contributing to the maintenance of proper higher-order structure of DNA during mitosis. Involved in chromosome condensation and proper cytokinesis. Nucleosomes are preferred as substrate compared to free histones. Mediates monomethylation of p53/TP53 at '\\Lys-382\\', leading to repress p53/TP53-target genes. Plays a negative role in TGF-beta response regulation and a positive role in cell migration.

Aliases: H4 K20 HMTase antibody, H4 K20 specific histone methyltransferase antibody, H4-K20-HMTase SETD8 antibody, Histone H4 K20 methyltransferase antibody, Histone lysine N methyltransferase H4 lysine 20 specific antibody, Histone-lysine N-methyltransferase SETD8 antibody, Lysine N-methyltransferase 5A antibody, N-lysine methyltransferase SETD8 antibody, Pr SET 7 antibody, Pr SET7 antibody, PR-Set7 antibody, PR/SET domain containing protein 07 antibody, PR/SET domain containing protein 8 antibody, PR/SET domain-containing protein 07 antibody, PR/SET07 antibody, PrSET7 antibody, SET 07 antibody, SET 8 antibody, SET domain containing (lysine methyltransferase) 8 antibody, SET domain containing 8 antibody, SET domain containing lysine methyltransferase 8 antibody, SET domain containing protein 8 antibody, SET domain-containing protein 8 antibody, SET07 antibody, SET8 antibody, SETD 8 antibody, setd8 antibody, SETD8_HUMAN antibody

UniProt: [Q9NQR1](#)

Application Details

Application Notes: Recommended dilution: IHC:1:20-1:200,

Restrictions: For Research Use only

Handling

Format: Liquid

Buffer: Preservative: 0.03 % Proclin 300
Constituents: 50 % Glycerol, 0.01M PBS, PH 7.4

Preservative: ProClin

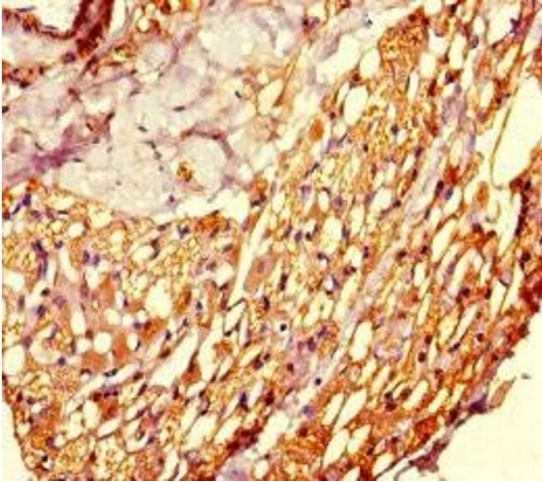
Precaution of Use: This product contains ProClin: a POISONOUS AND HAZARDOUS SUBSTANCE which should be handled by trained staff only.

Storage: -20 °C,-80 °C

Handling

Storage Comment: Upon receipt, store at -20°C or -80°C. Avoid repeated freeze.

Images



Immunohistochemistry

Image 1. Immunohistochemistry of paraffin-embedded human thyroid tissue using ABIN7160766 at dilution of 1:100