

Datasheet for ABIN7160770
anti-SETD6 antibody (AA 1-74)[Go to Product page](#)

1 Image

Overview

Quantity:	100 µg
Target:	SETD6
Binding Specificity:	AA 1-74
Reactivity:	Human
Host:	Rabbit
Clonality:	Polyclonal
Conjugate:	This SETD6 antibody is un-conjugated
Application:	Immunohistochemistry (IHC), ELISA

Product Details

Immunogen:	Recombinant Human N-lysine methyltransferase SETD6 protein (1-74AA)
Isotype:	IgG
Cross-Reactivity:	Human
Purification:	>95%, Protein G purified

Target Details

Target:	SETD6
Alternative Name:	SETD6 (SETD6 Products)
Background:	Background: Protein-lysine N-methyltransferase. Monomethylates '\\Lys-310\\' of the RELA subunit of NF-kappa-B complex, leading to down-regulate NF-kappa-B transcription factor

Target Details

activity (PubMed:21131967). Monomethylates '\\Lys-8\\' of H2AZ (H2AZK8me1) (PubMed:23324626). Required for the maintenance of embryonic stem cell self-renewal (By similarity).
Aliases: SETD6 antibody, N-lysine methyltransferase SETD6 antibody, EC 2.1.1.- antibody, SET domain-containing protein 6 antibody

UniProt: [Q8TBK2](#)

Application Details

Application Notes: Recommended dilution: IHC:1:200-1:500,

Restrictions: For Research Use only

Handling

Format: Liquid

Buffer: Preservative: 0.03 % Proclin 300
Constituents: 50 % Glycerol, 0.01M PBS, pH 7.4

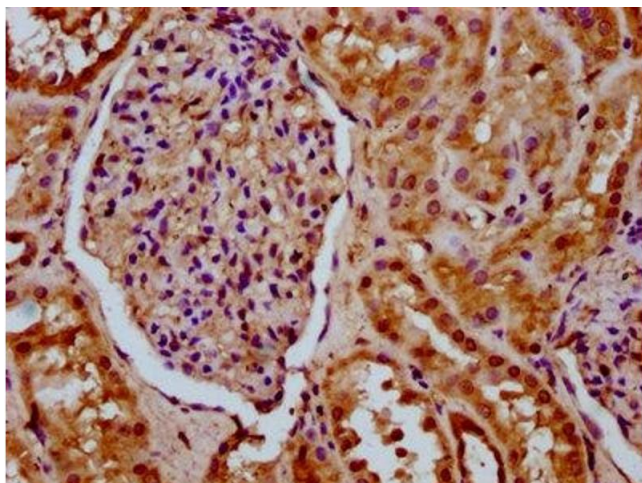
Preservative: ProClin

Precaution of Use: This product contains ProClin: a POISONOUS AND HAZARDOUS SUBSTANCE which should be handled by trained staff only.

Storage: -20 °C,-80 °C

Storage Comment: Upon receipt, store at -20°C or -80°C. Avoid repeated freeze.

Images



Immunohistochemistry

Image 1. IHC image of ABIN7160770 diluted at 1:200 and staining in paraffin-embedded human kidney tissue performed on a Leica Bond™ system. After dewaxing and hydration, antigen retrieval was mediated by high pressure in a citrate buffer (pH 6.0). Section was blocked with 10% normal goat serum 30min at RT. Then primary antibody (1% BSA) was incubated at 4°C overnight. The primary is detected by a biotinylated secondary antibody and

visualized using an HRP conjugated SP system.