



[Go to Product page](#)

Datasheet for ABIN7160793

## anti-AGA antibody (AA 206-346)

### 1 Image

#### Overview

Quantity:	100 µg
Target:	AGA
Binding Specificity:	AA 206-346
Reactivity:	Human
Host:	Rabbit
Clonality:	Polyclonal
Conjugate:	This AGA antibody is un-conjugated
Application:	Western Blotting (WB), ELISA

#### Product Details

Immunogen:	Recombinant Human N(4)-(beta-N-acetylglucosaminyl)-L-asparaginase protein (206-346AA)
Isotype:	IgG
Cross-Reactivity:	Human, Mouse
Purification:	>95%, Protein G purified

#### Target Details

Target:	AGA
Alternative Name:	AGA ( <a href="#">AGA Products</a> )
Background:	Background: Cleaves the GlcNAc-Asn bond which joins oligosaccharides to the peptide of asparagine-linked glycoproteins.

## Target Details

---

Aliases: Aga antibody, AGU antibody, Aspartylglucosaminidase antibody, Aspartylglucosylamine deaspartylase antibody, Aspartylglycosaminuria antibody, ASPG\_HUMAN antibody, ASRG antibody, GA antibody, Glycosylasparaginase antibody, Glycosylasparaginase beta chain antibody, N(4)-(beta-N-acetylglucosaminy)-L-asparaginase antibody, N4 (N acetyl beta glucosaminy) L asparagine amidase antibody, N4-(N-acetyl-beta-glucosaminy)-L-asparagine amidase antibody

UniProt: [P20933](#)

## Application Details

---

Application Notes: Recommended dilution: WB:1:1000-1:5000,

Restrictions: For Research Use only

## Handling

---

Format: Liquid

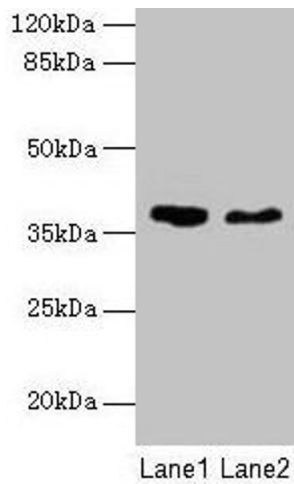
Buffer: Preservative: 0.03 % Proclin 300  
Constituents: 50 % Glycerol, 0.01M PBS, PH 7.4

Preservative: ProClin

Precaution of Use: This product contains ProClin: a POISONOUS AND HAZARDOUS SUBSTANCE which should be handled by trained staff only.

Storage: -20 °C,-80 °C

Storage Comment: Upon receipt, store at -20°C or -80°C. Avoid repeated freeze.



### Western Blotting

**Image 1.** Western blot All lanes: AGA antibody at 10 µg/mL  
Lane 1: 293T whole cell lysate Lane 2: Mouse muscle tissue  
Secondary Goat polyclonal to rabbit IgG at 1/10000 dilution  
Predicted band size: 38 kDa Observed band size: 38 kDa