

Datasheet for ABIN7160821
anti-NLRP1 antibody (AA 589-655)[Go to Product page](#)

3 Images

Overview

Quantity:	100 µg
Target:	NLRP1
Binding Specificity:	AA 589-655
Reactivity:	Human
Host:	Rabbit
Clonality:	Polyclonal
Conjugate:	This NLRP1 antibody is un-conjugated
Application:	Western Blotting (WB), ELISA, Immunohistochemistry (IHC), Immunofluorescence (IF)

Product Details

Immunogen:	Recombinant Human NACHT, LRR and PYD domains-containing protein 10 protein (589-655AA)
Isotype:	IgG
Cross-Reactivity:	Human, Rat
Purification:	>95%, Protein G purified

Target Details

Target:	NLRP1
Alternative Name:	NLRP1 (NLRP1 Products)
Background:	Background: Inhibits autoprocessing of CASP1, CASP1-dependent IL1B secretion, PYCARD

Target Details

aggregation and PYCARD-mediated apoptosis but not apoptosis induced by FAS or BID.

Displays anti-inflammatory activity. Plays a role in adaptive immunity through control of dendritic cell-mediated transport of antigen to the lymph nodes from peripheral sites. Required for immunity against *C.albicans* infection. Involved in the innate immune response by contributing to proinflammatory cytokine release in response to invasive bacterial infection.

Aliases: CLR11.1 antibody, NACHT, leucine rich repeat and PYD containing 10 antibody, NACHT, LRR and PYD domains containing protein 10 antibody, NACHT, LRR and PYD domains-containing protein 10 antibody, NAL10_HUMAN antibody, NALP10 antibody, NLR family, pyrin domain containing 10 antibody, Nlrp10 antibody, NOD8 antibody, Nucleotide-binding oligomerization domain protein 8 antibody, Nucleotide-binding oligomerization domain, leucine rich repeat and pyrin domain containing 10 antibody, PAN5 antibody, PYNOD antibody

UniProt: [Q86W26](#)

Pathways: [Positive Regulation of Endopeptidase Activity](#), [Inflammasome](#)

Application Details

Application Notes: Recommended dilution: WB:1:500-1:5000, IHC:1:200-1:500, IF:1:50-1:200,

Restrictions: For Research Use only

Handling

Format: Liquid

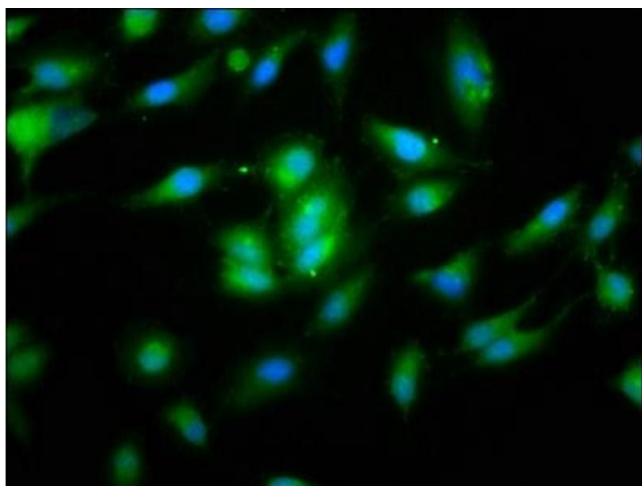
Buffer: Preservative: 0.03 % Proclin 300
Constituents: 50 % Glycerol, 0.01M PBS, pH 7.4

Preservative: ProClin

Precaution of Use: This product contains ProClin: a POISONOUS AND HAZARDOUS SUBSTANCE which should be handled by trained staff only.

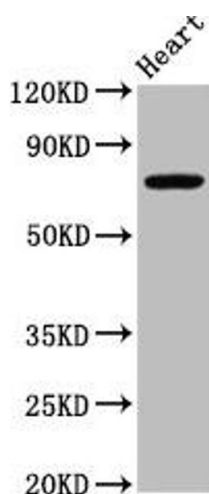
Storage: -20 °C, -80 °C

Storage Comment: Upon receipt, store at -20°C or -80°C. Avoid repeated freeze.



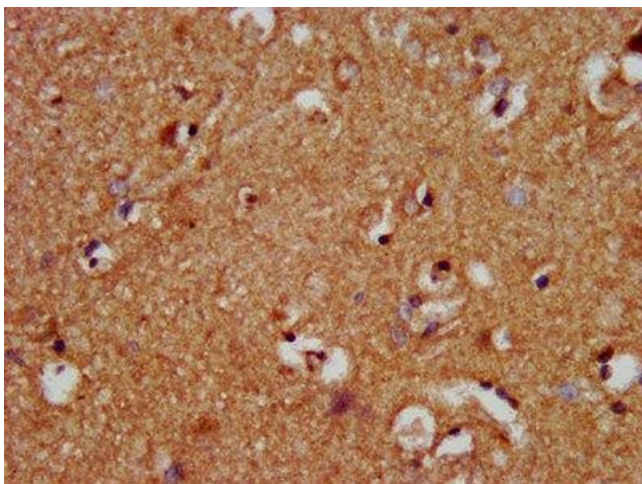
Immunofluorescence

Image 1. Immunofluorescence staining of HeLa cells with ABIN7160821 at 1:133, counter-stained with DAPI. The cells were fixed in 4 % formaldehyde, permeabilized using 0.2 % Triton X-100 and blocked in 10 % normal Goat Serum. The cells were then incubated with the antibody overnight at 4 °C. The secondary antibody was Alexa Fluor 488-conjugated AffiniPure Goat Anti-Rabbit IgG(H+L).



Western Blotting

Image 2. Western Blot Positive WB detected in: Rat heart tissue All lanes: NLRP10 antibody at 4.9 µg/mL Secondary Goat polyclonal to rabbit IgG at 1/50000 dilution Predicted band size: 76 kDa Observed band size: 76 kDa



Immunohistochemistry

Image 3. IHC image of ABIN7160821 diluted at 1:400 and staining in paraffin-embedded human brain tissue performed on a Leica Bond™ system. After dewaxing and hydration, antigen retrieval was mediated by high pressure in a citrate buffer (pH 6.0). Section was blocked with 10 % normal goat serum 30 min at RT. Then primary antibody (1 % BSA) was incubated at 4 °C overnight. The primary is detected by a biotinylated secondary antibody and visualized using an HRP conjugated SP system.