



[Go to Product page](#)

Datasheet for ABIN7160839
anti-NADK2 antibody (AA 16-156)

3 Images

Overview

Quantity:	100 µg
Target:	NADK2
Binding Specificity:	AA 16-156
Reactivity:	Human
Host:	Rabbit
Clonality:	Polyclonal
Conjugate:	This NADK2 antibody is un-conjugated
Application:	Western Blotting (WB), ELISA, Immunohistochemistry (IHC)

Product Details

Immunogen:	Recombinant Human NAD kinase 2, mitochondrial protein (16-156AA)
Isotype:	IgG
Cross-Reactivity:	Human, Mouse, Rat
Purification:	>95%, Protein G purified

Target Details

Target:	NADK2
Alternative Name:	NADK2 (NADK2 Products)
Background:	Background: Mitochondrial NAD(+) kinase that phosphorylates NAD(+) to yield NADP(+). Can use both ATP or inorganic polyphosphate as the phosphoryl donor. Also has weak NADH kinase

Target Details

activity in vitro, however NADH kinase activity is much weaker than the NAD(+) kinase activity and may not be relevant in vivo.

Aliases: C5orf33 antibody, CE033_HUMAN antibody, Chromosome 5 open reading frame 33 antibody, FLJ30596 antibody, Hypothetical protein LOC133686 antibody, MGC43298 antibody, NADKD1 antibody, OTTHUMP00000161732 antibody, UPF0465 protein C5orf33 antibody

UniProt: [Q4G0N4](#)

Application Details

Application Notes: Recommended dilution: WB:1:500-1:5000, IHC:1:500-1:1000,

Restrictions: For Research Use only

Handling

Format: Liquid

Buffer: Preservative: 0.03 % Proclin 300
Constituents: 50 % Glycerol, 0.01M PBS, pH 7.4

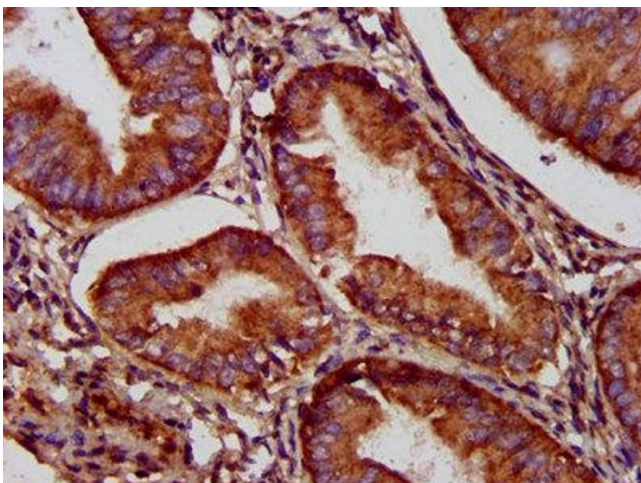
Preservative: ProClin

Precaution of Use: This product contains ProClin: a POISONOUS AND HAZARDOUS SUBSTANCE which should be handled by trained staff only.

Storage: -20 °C,-80 °C

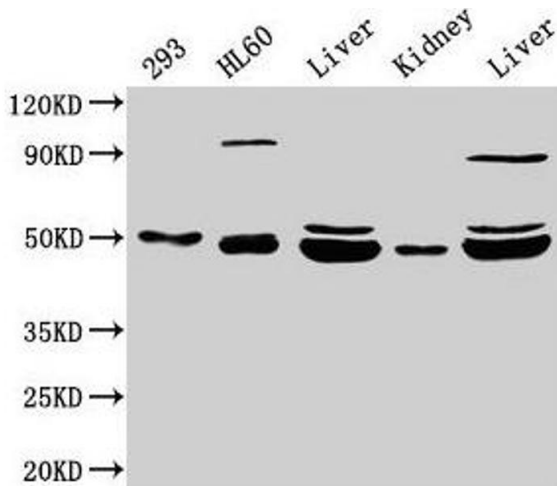
Storage Comment: Upon receipt, store at -20°C or -80°C. Avoid repeated freeze.

Images



Immunohistochemistry

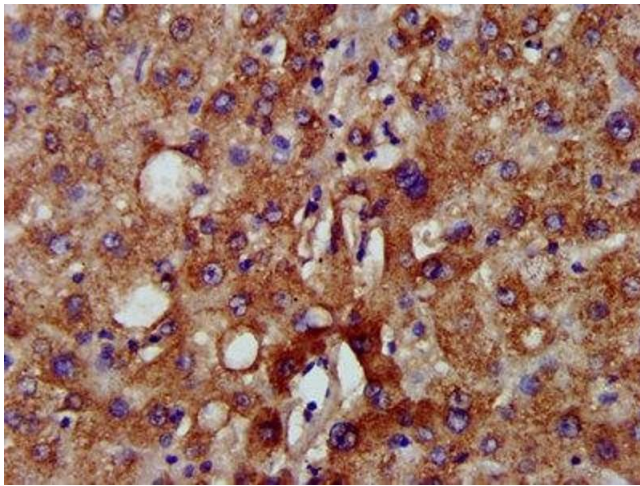
Image 1. IHC image of ABIN7160839 diluted at 1:500 and staining in paraffin-embedded human endometrial cancer performed on a Leica Bond™ system. After dewaxing and hydration, antigen retrieval was mediated by high pressure in a citrate buffer (pH 6.0). Section was blocked with 10% normal goat serum 30min at RT. Then primary antibody (1% BSA) was incubated at 4°C overnight. The primary is detected by a biotinylated secondary antibody and



visualized using an HRP conjugated SP system.

Western Blotting

Image 2. Western Blot Positive WB detected in: 293 whole cell lysate, HL60 whole cell lysate, Rat liver tissue, Mouse kidney tissue, Mouse liver tissue All lanes: NADK2 antibody at 4 µg/mL Secondary Goat polyclonal to rabbit IgG at 1/50000 dilution Predicted band size: 50, 46, 32 kDa Observed band size: 50, 46 kDa



Immunohistochemistry

Image 3. IHC image of ABIN7160839 diluted at 1:500 and staining in paraffin-embedded human liver tissue performed on a Leica Bond™ system. After dewaxing and hydration, antigen retrieval was mediated by high pressure in a citrate buffer (pH 6.0). Section was blocked with 10% normal goat serum 30min at RT. Then primary antibody (1% BSA) was incubated at 4°C overnight. The primary is detected by a biotinylated secondary antibody and visualized using an HRP conjugated SP system.