

Datasheet for ABIN7160886  
**anti-NDUFA1 antibody (AA 1-70)**



[Go to Product page](#)

2 Images

## Overview

Quantity:	100 µg
Target:	NDUFA1
Binding Specificity:	AA 1-70
Reactivity:	Human
Host:	Rabbit
Clonality:	Polyclonal
Conjugate:	This NDUFA1 antibody is un-conjugated
Application:	ELISA, Immunohistochemistry (IHC), Immunofluorescence (IF)

## Product Details

Immunogen:	Recombinant Human NADH dehydrogenase [ubiquinone] 1 alpha subcomplex subunit 1 protein (1-70AA)
Isotype:	IgG
Cross-Reactivity:	Human
Purification:	>95%, Protein G purified

## Target Details

Target:	NDUFA1
Alternative Name:	NDUFA1 ( <a href="#">NDUFA1 Products</a> )
Background:	Background: NDUFA1 (NADH dehydrogenase (ubiquinone) 1 alpha subcomplex, 1) is an

## Target Details

---

essential component of the multisubunit NADH ubiquinone oxidoreductase (complex 1), the first enzyme complex in the mitochondrial respiratory chain. Complex I transfers electrons from NADH to the respiratory chain via ubiquinone.

Aliases: CI MWFE antibody, CI-MWFE antibody, Complex I MWFE antibody, complex I MWFE subunit antibody, Complex I-MWFE antibody, MWFE antibody, MWFE, B. taurus, homolog of antibody, NADH dehydrogenase (ubiquinone) 1 alpha subcomplex 1 7.5 kDa antibody, NADH dehydrogenase (ubiquinone) 1 alpha subcomplex 1 antibody, NADH dehydrogenase [ubiquinone] 1 alpha subcomplex subunit 1 antibody, NADH oxidoreductase subunit MWFE antibody, NADH ubiquinone oxidoreductase (complex 1) antibody, NADH ubiquinone oxidoreductase MWFE subunit antibody, NADH-ubiquinone oxidoreductase 1 alpha subcomplex, 1 antibody, NADH-ubiquinone oxidoreductase MWFE subunit antibody, NDUFA1\_HUMAN antibody, NDUFA 1 antibody, NDUFA1 antibody, Type I dehydrogenase antibody, ZNF 183 antibody, ZNF183 antibody

---

UniProt: [015239](#)

## Application Details

---

Application Notes: Recommended dilution: IHC:1:20-1:200, IF:1:50-1:200,

Restrictions: For Research Use only

## Handling

---

Format: Liquid

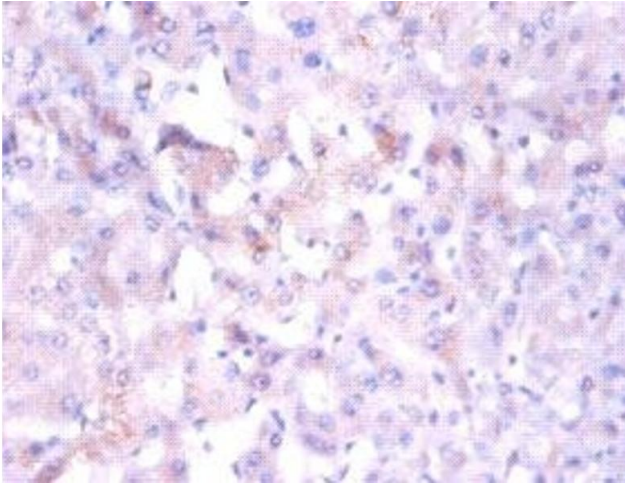
Buffer: Preservative: 0.03 % Proclin 300  
Constituents: 50 % Glycerol, 0.01M PBS, PH 7.4

Preservative: ProClin

Precaution of Use: This product contains ProClin: a POISONOUS AND HAZARDOUS SUBSTANCE which should be handled by trained staff only.

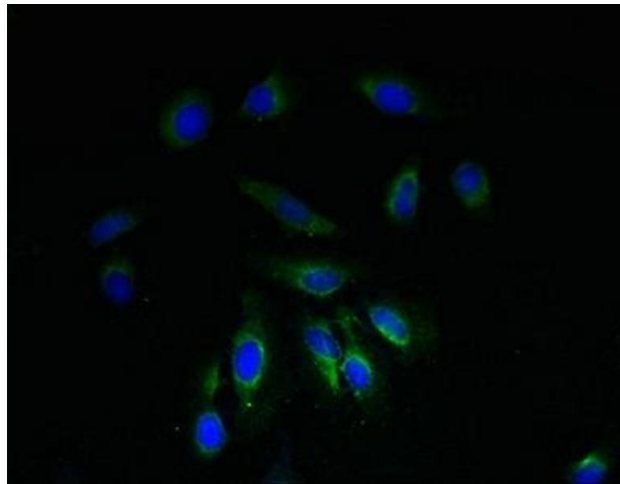
Storage: -20 °C,-80 °C

Storage Comment: Upon receipt, store at -20°C or -80°C. Avoid repeated freeze.



#### Immunohistochemistry

**Image 1.** Immunohistochemistry of paraffin-embedded human liver tissue using ABIN7160886 at dilution of 1:100



#### Immunofluorescence

**Image 2.** Immunofluorescent analysis of HeLa cells using ABIN7160886 at dilution of 1:100 and Alexa Fluor 488-conjugated AffiniPure Goat Anti-Rabbit IgG(H+L)