

Datasheet for ABIN7160891
anti-NDUFA12 antibody (AA 1-145)



[Go to Product page](#)

4 Images

Overview

Quantity:	100 µL
Target:	NDUFA12
Binding Specificity:	AA 1-145
Reactivity:	Human
Host:	Rabbit
Clonality:	Polyclonal
Conjugate:	This NDUFA12 antibody is un-conjugated
Application:	Western Blotting (WB), ELISA, Immunohistochemistry (IHC), Immunofluorescence (IF)

Product Details

Immunogen:	Recombinant Human NADH dehydrogenase [ubiquinone] 1 alpha subcomplex subunit 12 protein (1-145AA)
Isotype:	IgG
Cross-Reactivity:	Human
Purification:	Antigen Affinity Purified

Target Details

Target:	NDUFA12
Alternative Name:	NDUFA12 (NDUFA12 Products)
Background:	Background: Accessory subunit of the mitochondrial membrane respiratory chain NADH

Target Details

dehydrogenase (Complex I), that is believed not to be involved in catalysis. Complex I functions in the transfer of electrons from NADH to the respiratory chain. The immediate electron acceptor for the enzyme is believed to be ubiquinone.

Aliases: 13 kDa differentiation associated protein antibody, 13 kDa differentiation-associated protein antibody, 2410011G03Rik antibody, AW112974 antibody, B17.2 antibody, CI-B17.2 antibody, CIB17.2 antibody, Complex I B17.2 antibody, Complex I B17.2 subunit antibody, Complex I-B17.2 antibody, DAP13 antibody, MGC107642 antibody, MGC7999 antibody, NADH dehydrogenase (ubiquinone) 1 alpha subcomplex 12 antibody, NADH dehydrogenase [ubiquinone] 1 alpha subcomplex subunit 12 antibody, NADH ubiquinone oxidoreductase subunit B17.2 antibody, NADH-ubiquinone oxidoreductase subunit B17.2 antibody, NDUAC_HUMAN antibody, NDUFA12 antibody, RGD1311462 antibody

UniProt: [Q9UI09](#)

Application Details

Application Notes: Recommended dilution: WB:1:500-1:2000, IHC:1:20-1:200, IF:1:50-1:200,

Restrictions: For Research Use only

Handling

Format: Liquid

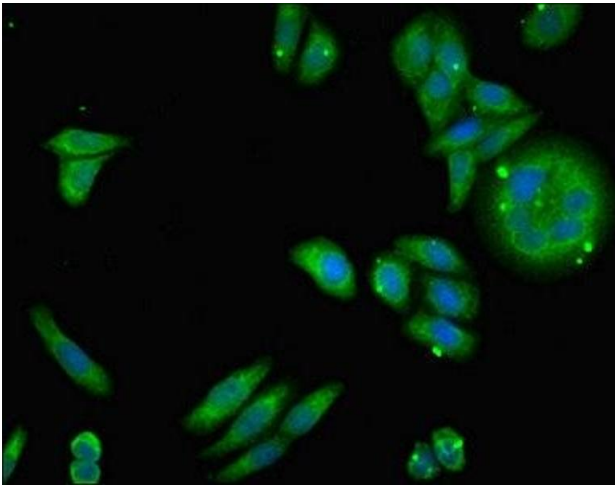
Buffer: PBS with 0.02 % sodium azide, 50 % glycerol, pH 7.3.

Preservative: Sodium azide

Precaution of Use: This product contains Sodium azide: a POISONOUS AND HAZARDOUS SUBSTANCE which should be handled by trained staff only.

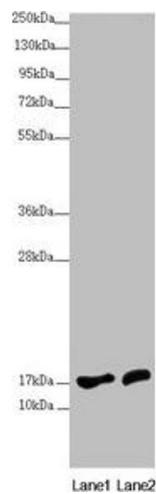
Storage: -20 °C,-80 °C

Storage Comment: Upon receipt, store at -20°C or -80°C. Avoid repeated freeze.



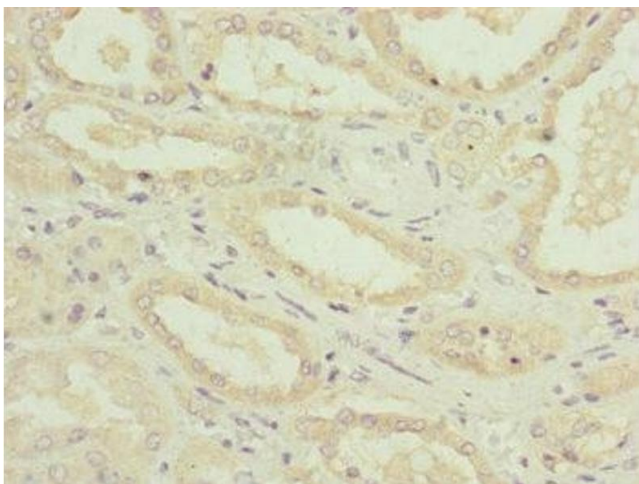
Immunofluorescence

Image 1. Immunofluorescent analysis of HepG2 cells using ABIN7160891 at dilution of 1:100 and Alexa Fluor 488-conjugated AffiniPure Goat Anti-Rabbit IgG(H+L)



Western Blotting

Image 2. Western blot All lanes: NDUFA12 antibody at 3.71 µg/mL Lane 1: HepG2 whole cell lysate Lane 2: 293T whole cell lysate Secondary Goat polyclonal to rabbit IgG at 1/10000 dilution Predicted band size: 18, 8 kDa Observed band size: 18 kDa



Immunohistochemistry

Image 3. Immunohistochemistry of paraffin-embedded human kidney tissue using ABIN7160891 at dilution of 1:100

Please check the [product details page](#) for more images. Overall 4 images are available for ABIN7160891.