

Datasheet for ABIN7160988
anti-MT-ND1 antibody (AA 23-67)

3 Images

[Go to Product page](#)

Overview

Quantity:	100 µg
Target:	MT-ND1
Binding Specificity:	AA 23-67
Reactivity:	Human
Host:	Rabbit
Clonality:	Polyclonal
Conjugate:	This MT-ND1 antibody is un-conjugated
Application:	Western Blotting (WB), ELISA, Immunohistochemistry (IHC)

Product Details

Immunogen:	Recombinant Human NADH-ubiquinone oxidoreductase chain 1 protein (23-67AA)
Isotype:	IgG
Cross-Reactivity:	Human, Mouse
Purification:	>95%, Protein G purified

Target Details

Target:	MT-ND1
Alternative Name:	MT-ND1 (MT-ND1 Products)
Background:	Background: Core subunit of the mitochondrial membrane respiratory chain NADH dehydrogenase (Complex I) that is believed to belong to the minimal assembly required for

Target Details

catalysis. Complex I functions in the transfer of electrons from NADH to the respiratory chain. The immediate electron acceptor for the enzyme is believed to be ubiquinone (By similarity).
Aliases: Complex I, subunit ND1 antibody, Mitochondrially encoded NADH dehydrogenase 1 antibody, MT-ND1 antibody, MTND1 antibody, NAD1 antibody, NADH dehydrogenase subunit 1 (complex I) antibody, NADH dehydrogenase subunit 1 antibody, NADH-ubiquinone oxidoreductase chain 1 antibody, NADH-ubiquinone oxidoreductase, subunit ND1 antibody, NADH1 antibody, ND1 antibody, NU1M_HUMAN antibody

UniProt: [P03886](#)

Application Details

Application Notes: Recommended dilution: WB:1:500-1:5000, IHC:1:20-1:200,

Restrictions: For Research Use only

Handling

Format: Liquid

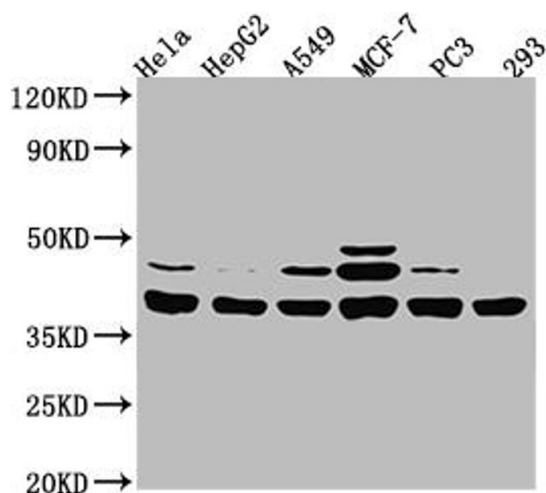
Buffer: Preservative: 0.03 % Proclin 300
Constituents: 50 % Glycerol, 0.01M PBS, PH 7.4

Preservative: ProClin

Precaution of Use: This product contains ProClin: a POISONOUS AND HAZARDOUS SUBSTANCE which should be handled by trained staff only.

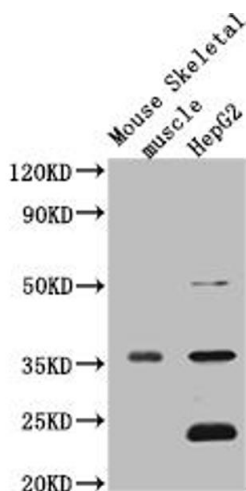
Storage: -20 °C,-80 °C

Storage Comment: Upon receipt, store at -20°C or -80°C. Avoid repeated freeze.



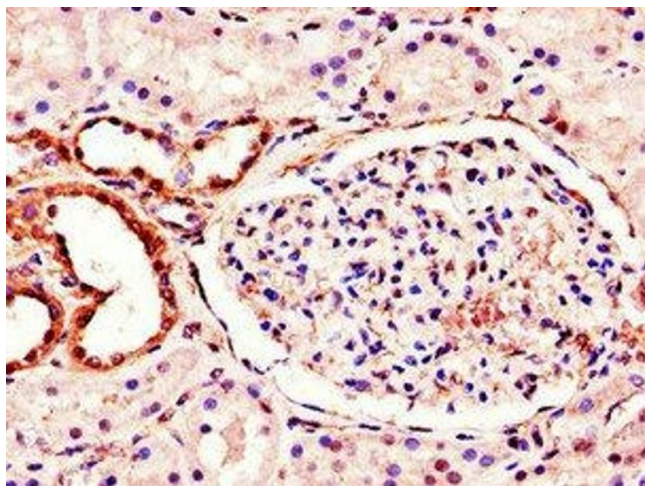
Western Blotting

Image 1. Western Blot Positive WB detected in: HeLa whole cell lysate, HepG2 whole cell lysate, A549 whole cell lysate, MCF-7 whole cell lysate, PC-3 whole cell lysate, 293 whole cell lysate All lanes: MT-ND1 antibody at 1:2000 Secondary Goat polyclonal to rabbit IgG at 1/50000 dilution Predicted band size: 36 kDa Observed band size: 38 kDa



Western Blotting

Image 2. Western Blot Positive WB detected in: Mouse heart tissue, Mouse liver tissue, Mouse kidney tissue, Mouse brain tissue, Mouse skeletal muscle tissue, Mouse stomach tissue All lanes: MTND1 antibody at 3 µg/mL Secondary Goat polyclonal to rabbit IgG at 1/50000 dilution Predicted band size: 36 kDa Observed band size: 36 kDa



Immunohistochemistry

Image 3. Immunohistochemistry of paraffin-embedded human kidney tissue using ABIN7160988 at dilution of 1:100