

Datasheet for ABIN7161089
anti-SLC11A1 antibody (AA 1-58)[Go to Product page](#)

3 Images

Overview

Quantity:	100 µg
Target:	SLC11A1
Binding Specificity:	AA 1-58
Reactivity:	Human
Host:	Rabbit
Clonality:	Polyclonal
Conjugate:	This SLC11A1 antibody is un-conjugated
Application:	Western Blotting (WB), ELISA, Immunofluorescence (IF), Immunohistochemistry (IHC)

Product Details

Immunogen:	Recombinant Human Natural resistance-associated macrophage protein 1 protein (1-58AA)
Isotype:	IgG
Cross-Reactivity:	Human, Rat
Purification:	>95%, Protein G purified

Target Details

Target:	SLC11A1
Alternative Name:	SLC11A1 (SLC11A1 Products)
Background:	Background: Divalent transition metal (iron and manganese) transporter involved in iron metabolism and host resistance to certain pathogens. Macrophage-specific membrane

Target Details

transport function. Controls natural resistance to infection with intracellular parasites. Pathogen resistance involves sequestration of Fe(2+) and Mn(2+), cofactors of both prokaryotic and eukaryotic catalases and superoxide dismutases, not only to protect the macrophage against its own generation of reactive oxygen species, but to deny the cations to the pathogen for synthesis of its protective enzymes.

Aliases: LSH antibody, Natural resistance associated macrophage protein 1 antibody, Natural resistance-associated macrophage protein 1 antibody, NRAM1_HUMAN antibody, NRAMP 1 antibody, NRAMP antibody, PBC antibody, SLC11A1 antibody, Solute carrier family 11 (proton coupled divalent metal ion transporters) member 1 antibody, solute carrier family 11 (sodium/phosphate symporters) member 1 antibody, Solute carrier family 11 member 1 antibody

UniProt: [P49279](#)

Pathways: [Transition Metal Ion Homeostasis](#), [Production of Molecular Mediator of Immune Response](#), [Protein targeting to Nucleus](#)

Application Details

Application Notes: Recommended dilution: WB:1:500-1:5000, IHC:1:100-1:300, IF:1:50-1:200,

Restrictions: For Research Use only

Handling

Format: Liquid

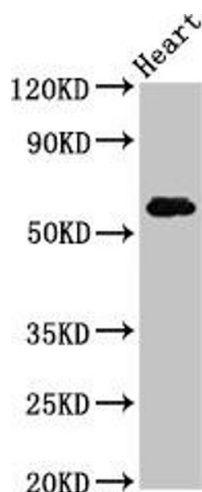
Buffer: Preservative: 0.03 % Proclin 300
Constituents: 50 % Glycerol, 0.01M PBS, pH 7.4

Preservative: ProClin

Precaution of Use: This product contains ProClin: a POISONOUS AND HAZARDOUS SUBSTANCE which should be handled by trained staff only.

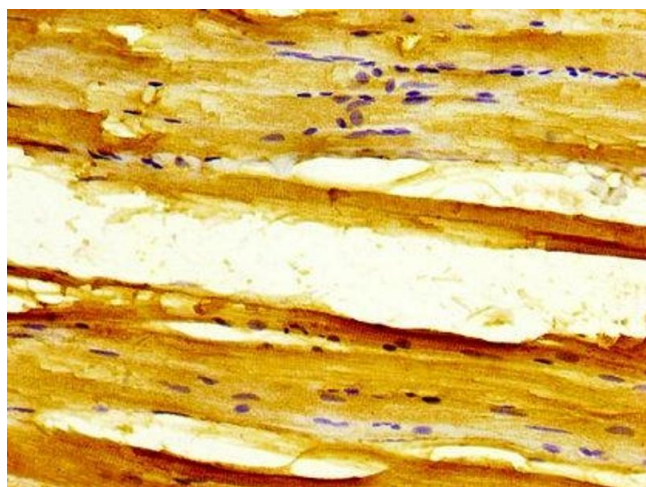
Storage: -20 °C,-80 °C

Storage Comment: Upon receipt, store at -20°C or -80°C. Avoid repeated freeze.



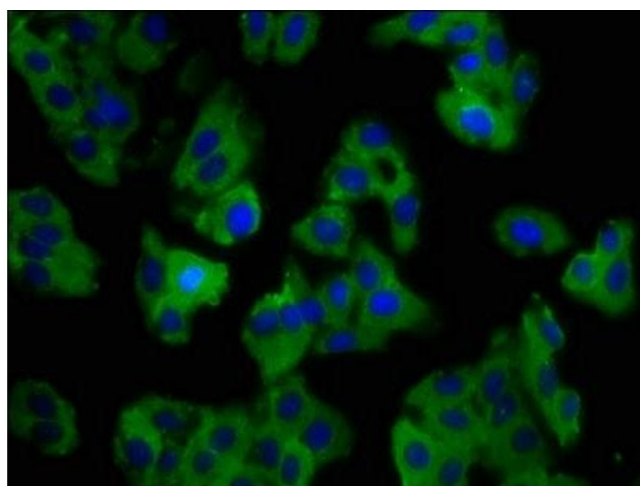
Western Blotting

Image 1. Western Blot Positive WB detected in: Rat heart tissue All lanes: SLC11A1 antibody at 5 µg/mL Secondary Goat polyclonal to rabbit IgG at 1/50000 dilution Predicted band size: 60, 48 kDa Observed band size: 60 kDa



Immunohistochemistry

Image 2. IHC image of ABIN7161089 diluted at 1:300 and staining in paraffin-embedded human skeletal muscle tissue performed on a Leica Bond™ system. After dewaxing and hydration, antigen retrieval was mediated by high pressure in a citrate buffer (pH 6.0). Section was blocked with 10 % normal goat serum 30 min at RT. Then primary antibody (1 % BSA) was incubated at 4 °C overnight. The primary is detected by a biotinylated secondary antibody and visualized using an HRP conjugated SP system.



Immunofluorescence

Image 3. Immunofluorescence staining of HepG2 cells with ABIN7161089 at 1:100, counter-stained with DAPI. The cells were fixed in 4 % formaldehyde, permeabilized using 0.2 % Triton X-100 and blocked in 10 % normal Goat Serum. The cells were then incubated with the antibody overnight at 4 °C. The secondary antibody was Alexa Fluor 488-conjugated AffiniPure Goat Anti-Rabbit IgG(H+L).