



Datasheet for ABIN7161093
anti-SLC11A2 antibody (AA 1-69)



[Go to Product page](#)

3 Images

Overview

Quantity:	100 µg
Target:	SLC11A2
Binding Specificity:	AA 1-69
Reactivity:	Human
Host:	Rabbit
Clonality:	Polyclonal
Conjugate:	This SLC11A2 antibody is un-conjugated
Application:	ELISA, Western Blotting (WB), Immunohistochemistry (IHC), Immunofluorescence (IF)

Product Details

Immunogen:	Recombinant Human Natural resistance-associated macrophage protein 2 protein (1-69AA)
Isotype:	IgG
Cross-Reactivity:	Human
Purification:	>95%, Protein G purified

Target Details

Target:	SLC11A2
Alternative Name:	SLC11A2 (SLC11A2 Products)
Background:	Background: Important in metal transport, in particular iron. Can also transport manganese, cobalt, cadmium, nickel, vanadium and lead. Involved in apical iron uptake into duodenal

Target Details

enterocytes. Involved in iron transport from acidified endosomes into the cytoplasm of erythroid precursor cells. May play an important role in hepatic iron accumulation and tissue iron distribution. May serve to import iron into the mitochondria.

Aliases: DCT 1 antibody, dct-1 antibody, DCT1 antibody, Divalent cation transporter 1 antibody, Divalent metal transporter 1 antibody, DMT 1 antibody, DMT-1 antibody, DMT1 antibody, FLJ37416 antibody, Natural resistance associated macrophage protein 2 antibody, Natural resistance-associated macrophage protein 2 antibody, NRAM2_HUMAN antibody, NRAMP 2 antibody, NRAMP2 antibody, OK/SW-cl.20 antibody, Slc11a2 antibody, Solute carrier family 11 (proton coupled divalent metal ion transporters) member 2 antibody, Solute carrier family 11 member 2 antibody

UniProt: [P49281](#)

Pathways: [Transition Metal Ion Homeostasis](#), [Proton Transport](#), [Positive Regulation of Endopeptidase Activity](#)

Application Details

Application Notes: Recommended dilution: WB:1:500-1:5000, IHC:1:20-1:200, IF:1:50-1:200,

Restrictions: For Research Use only

Handling

Format: Liquid

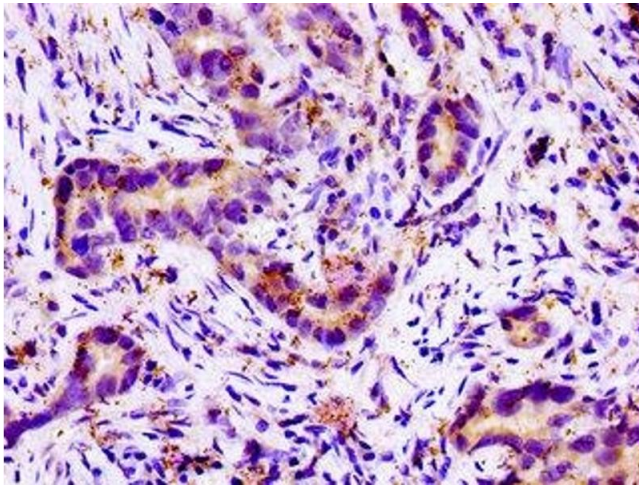
Buffer: Preservative: 0.03 % Proclin 300
Constituents: 50 % Glycerol, 0.01M PBS, pH 7.4

Preservative: ProClin

Precaution of Use: This product contains ProClin: a POISONOUS AND HAZARDOUS SUBSTANCE which should be handled by trained staff only.

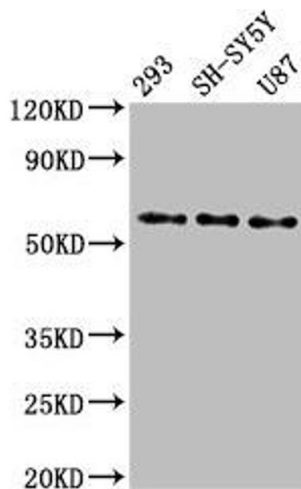
Storage: -20 °C,-80 °C

Storage Comment: Upon receipt, store at -20°C or -80°C. Avoid repeated freeze.



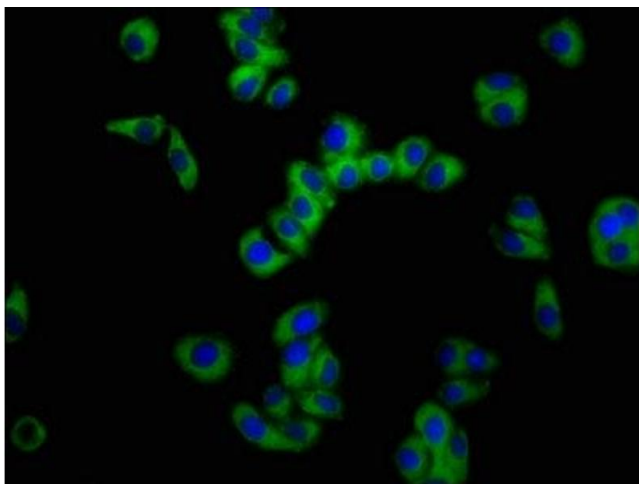
Immunohistochemistry

Image 1. Immunohistochemistry of paraffin-embedded human pancreatic cancer using ABIN7161093 at dilution of 1:100



Western Blotting

Image 2. Western Blot Positive WB detected in: 293 whole cell lysate, SH-SY5Y whole cell lysate, U87 whole cell lysate All lanes: SLC11A2 antibody at 3 µg/mL Secondary Goat polyclonal to rabbit IgG at 1/50000 dilution Predicted band size: 63, 62, 65, 66 kDa Observed band size: 63 kDa



Immunofluorescence

Image 3. Immunofluorescence staining of HepG2 cells with ABIN7161093 at 1:100, counter-stained with DAPI. The cells were fixed in 4 % formaldehyde, permeabilized using 0.2 % Triton X-100 and blocked in 10 % normal Goat Serum. The cells were then incubated with the antibody overnight at 4 °C. The secondary antibody was Alexa Fluor 488-conjugated AffiniPure Goat Anti-Rabbit IgG(H+L).