

Datasheet for ABIN7161101
anti-Nebulin antibody (AA 245-373)[Go to Product page](#)

3 Images

Overview

Quantity:	100 µg
Target:	Nebulin (NEB)
Binding Specificity:	AA 245-373
Reactivity:	Human
Host:	Rabbit
Clonality:	Polyclonal
Conjugate:	This Nebulin antibody is un-conjugated
Application:	ELISA, Immunohistochemistry (IHC), Immunofluorescence (IF)

Product Details

Immunogen:	Recombinant Human Nebulin protein (245-373AA)
Isotype:	IgG
Cross-Reactivity:	Human
Purification:	>95%, Protein G purified

Target Details

Target:	Nebulin (NEB)
Alternative Name:	NEB (NEB Products)
Target Type:	Chemical
Background:	Background: This giant muscle protein may be involved in maintaining the structural integrity of

Target Details

sarcomeres and the membrane system associated with the myofibrils. Binds and stabilize F-actin.

Aliases: DKFZp686C1456 antibody, FLJ11505 antibody, FLJ36536 antibody, FLJ39568 antibody, FLJ39584 antibody, NEB 177D antibody, NEB antibody, NEB177D antibody, NEBU_HUMAN antibody, Nebulin antibody, NEM 2 antibody, NEM2 antibody

UniProt: [P20929](#)

Application Details

Application Notes: Recommended dilution: IHC:1:500-1:1000, IF:1:200-1:500,

Restrictions: For Research Use only

Handling

Format: Liquid

Buffer: Preservative: 0.03 % Proclin 300
Constituents: 50 % Glycerol, 0.01M PBS, pH 7.4

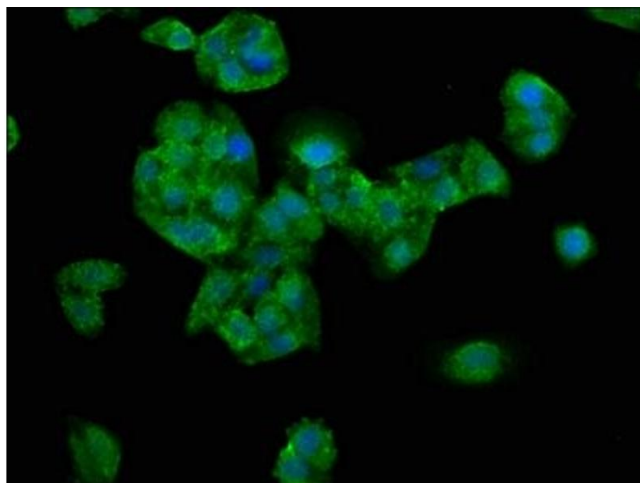
Preservative: ProClin

Precaution of Use: This product contains ProClin: a POISONOUS AND HAZARDOUS SUBSTANCE which should be handled by trained staff only.

Storage: -20 °C,-80 °C

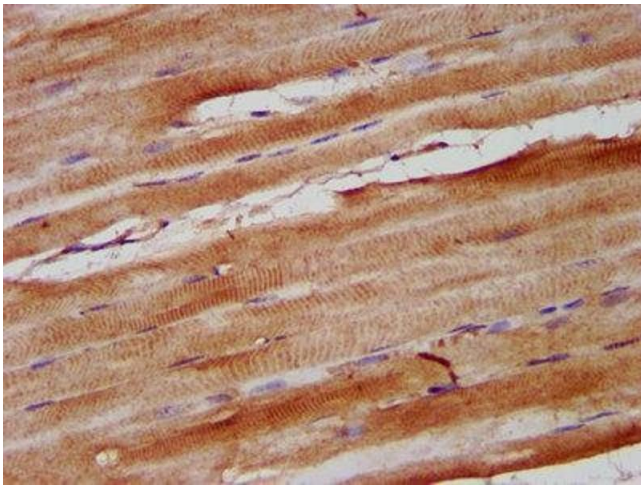
Storage Comment: Upon receipt, store at -20°C or -80°C. Avoid repeated freeze.

Images



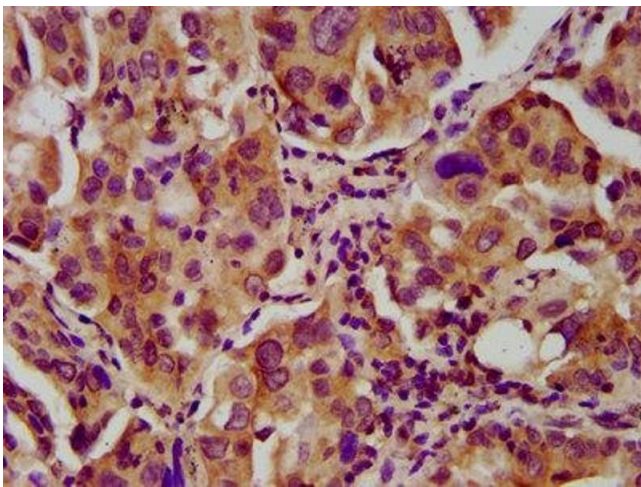
Immunofluorescence

Image 1. Immunofluorescence staining of HepG2 cells with ABIN7161101 at 1:200, counter-stained with DAPI. The cells were fixed in 4% formaldehyde, permeabilized using 0.2% Triton X-100 and blocked in 10% normal Goat Serum. The cells were then incubated with the antibody overnight at 4°C. The secondary antibody was Alexa Fluor 488-conjugated AffiniPure Goat Anti-Rabbit IgG(H+L).



Immunohistochemistry

Image 2. IHC image of ABIN7161101 diluted at 1:600 and staining in paraffin-embedded human skeletal muscle tissue performed on a Leica Bond™ system. After dewaxing and hydration, antigen retrieval was mediated by high pressure in a citrate buffer (pH 6.0). Section was blocked with 10% normal goat serum 30min at RT. Then primary antibody (1% BSA) was incubated at 4°C overnight. The primary is detected by a biotinylated secondary antibody and visualized using an HRP conjugated SP system.



Immunohistochemistry

Image 3. IHC image of ABIN7161101 diluted at 1:600 and staining in paraffin-embedded human lung cancer performed on a Leica Bond™ system. After dewaxing and hydration, antigen retrieval was mediated by high pressure in a citrate buffer (pH 6.0). Section was blocked with 10% normal goat serum 30min at RT. Then primary antibody (1% BSA) was incubated at 4°C overnight. The primary is detected by a biotinylated secondary antibody and visualized using an HRP conjugated SP system.