

Datasheet for ABIN7161105  
**anti-NDN antibody (AA 1-98)**[Go to Product page](#)

## 2 Images

## Overview

Quantity:	100 µg
Target:	NDN
Binding Specificity:	AA 1-98
Reactivity:	Human
Host:	Rabbit
Clonality:	Polyclonal
Conjugate:	This NDN antibody is un-conjugated
Application:	ELISA, Immunofluorescence (IF), Immunohistochemistry (IHC)

## Product Details

Immunogen:	Recombinant Human Necdin protein (1-98AA)
Isotype:	IgG
Cross-Reactivity:	Human
Purification:	>95%, Protein G purified

## Target Details

Target:	NDN
Alternative Name:	NDN ( <a href="#">NDN Products</a> )
Background:	Background: Growth suppressor that facilitates the entry of the cell into cell cycle arrest. Functionally similar to the retinoblastoma protein it binds to and represses the activity of cell-

## Target Details

cycle-promoting proteins such as SV40 large T antigen, adenovirus E1A, and the transcription factor E2F. Necdin also interacts with p53 and works in an additive manner to inhibit cell growth. Functions also as transcription factor and binds directly to specific guanosine-rich DNA sequences (By similarity).

Aliases: HsT16328 antibody, NDN antibody, NECD\_HUMAN antibody, Necdin antibody, Necdin homolog antibody, Necdin MAGE family member antibody, necdin related protein antibody, PWCR antibody

UniProt: [Q99608](#)

Pathways: [Neurotrophin Signaling Pathway](#)

## Application Details

Application Notes: Recommended dilution: IHC:1:200-1:500, IF:1:50-1:200,

Restrictions: For Research Use only

## Handling

Format: Liquid

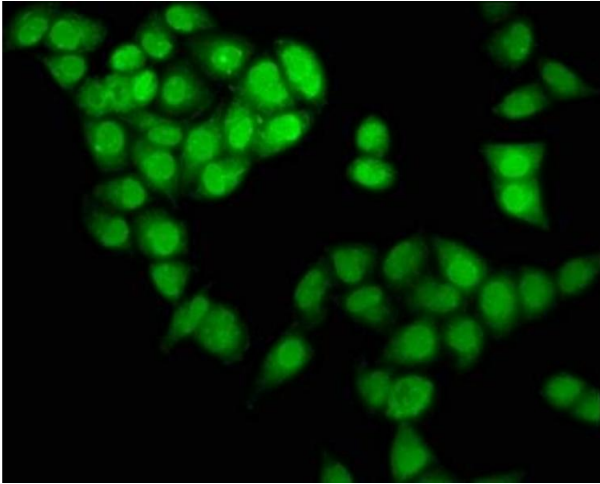
Buffer: Preservative: 0.03 % Proclin 300  
Constituents: 50 % Glycerol, 0.01M PBS, pH 7.4

Preservative: ProClin

Precaution of Use: This product contains ProClin: a POISONOUS AND HAZARDOUS SUBSTANCE which should be handled by trained staff only.

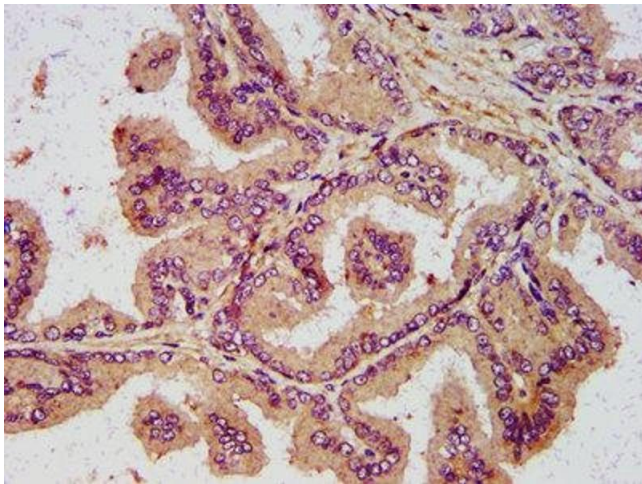
Storage: -20 °C,-80 °C

Storage Comment: Upon receipt, store at -20°C or -80°C. Avoid repeated freeze.



#### Immunofluorescence

**Image 1.** Immunofluorescence staining of HeLa cells with ABIN7161105 at 1:133, counter-stained with DAPI. The cells were fixed in 4% formaldehyde, permeabilized using 0.2% Triton X-100 and blocked in 10% normal Goat Serum. The cells were then incubated with the antibody overnight at 4°C. The secondary antibody was Alexa Fluor 488-conjugated AffiniPure Goat Anti-Rabbit IgG(H+L).



#### Immunohistochemistry

**Image 2.** IHC image of ABIN7161105 diluted at 1:400 and staining in paraffin-embedded human prostate tissue performed on a Leica Bond™ system. After dewaxing and hydration, antigen retrieval was mediated by high pressure in a citrate buffer (pH 6.0). Section was blocked with 10% normal goat serum 30min at RT. Then primary antibody (1% BSA) was incubated at 4°C overnight. The primary is detected by a biotinylated secondary antibody and visualized using an HRP conjugated SP system.