

Datasheet for ABIN7161118  
**anti-NDFIP1 antibody (AA 2-116)**[Go to Product page](#)

## 4 Images

## Overview

Quantity:	100 µg
Target:	NDFIP1
Binding Specificity:	AA 2-116
Reactivity:	Human
Host:	Rabbit
Clonality:	Polyclonal
Conjugate:	This NDFIP1 antibody is un-conjugated
Application:	ELISA, Western Blotting (WB), Immunohistochemistry (IHC), Immunofluorescence (IF)

## Product Details

Immunogen:	Recombinant Human NEDD4 family-interacting protein 1 protein (2-116AA)
Isotype:	IgG
Cross-Reactivity:	Human
Purification:	>95%, Protein G purified

## Target Details

Target:	NDFIP1
Alternative Name:	NDFIP1 ( <a href="#">NDFIP1 Products</a> )
Background:	Background: Activates HECT domain-containing E3 ubiquitin-protein ligases, including NEDD4 and ITCH, and consequently modulates the stability of their targets. As a result, controls many

## Target Details

cellular processes. Prevents chronic T-helper cells-mediated inflammation by activating ITCH and thus controlling JUNB degradation (By similarity). In cortical neurons, mediates the ubiquitination of SLC11A2/DMT1 by NEDD4L, leading to down-regulation of the divalent metal transporter and protection of the cells from cobalt and iron toxicity (PubMed:19706893).

Modulates EGFR signaling through multiple pathways. In particular, may regulate the ratio of AKT1-to-MAPK8 signaling in response to EGF, acting on AKT1 probably through PTEN destabilization and on MAPK8 through ITCH-dependent MAP2K4 inactivation. As a result, may control cell growth rate (PubMed:20534535). Enhances the ubiquitination of BRAT1 mediated by E3 ubiquitin-protein ligases: NEDD4, NEDD4L and ITCH, and is required for the nuclear localization of ubiquitinated BRAT1 (PubMed:25631046).

Aliases: 0610010M22Rik antibody, Breast cancer associated protein SGA 1M antibody, Breast cancer-associated protein SGA-1M antibody, MGC10924 antibody, N4WBP5 antibody, Ndfip1 antibody, Nedd4 family interacting protein 1 antibody, NEDD4 family-interacting protein 1 antibody, NEDD4 WW domain binding protein 5 antibody, NEDD4 WW domain-binding protein 5 antibody, NFIP1\_HUMAN antibody, Putative MAPK activating protein PM13 antibody, Putative MAPK-activating protein PM13 antibody, Putative NF kappa B activating protein 164 antibody, Putative NF-kappa-B-activating protein 164 antibody, Putative NFKB and MAPK activating protein antibody, Putative NFKB and MAPK-activating protein antibody

UniProt: [Q9BT67](#)

Pathways: [Transition Metal Ion Homeostasis](#), [Regulation of Leukocyte Mediated Immunity](#), [Production of Molecular Mediator of Immune Response](#), [Negative Regulation of Transporter Activity](#)

## Application Details

Application Notes: Recommended dilution: WB:1:500-1:2000, IHC:1:20-1:200, IF:1:50-1:200,

Restrictions: For Research Use only

## Handling

Format: Liquid

Buffer: Preservative: 0.03 % Proclin 300  
Constituents: 50 % Glycerol, 0.01M PBS, PH 7.4

Preservative: ProClin

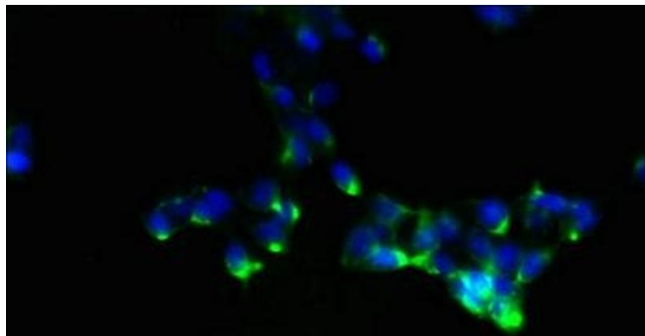
Precaution of Use: This product contains ProClin: a POISONOUS AND HAZARDOUS SUBSTANCE which should be handled by trained staff only.

## Handling

Storage: -20 °C, -80 °C

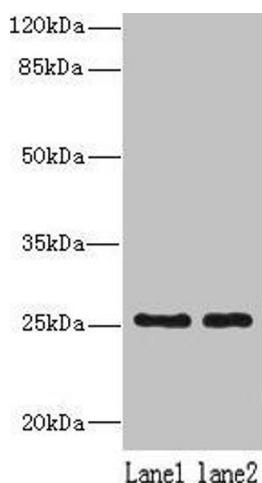
Storage Comment: Upon receipt, store at -20°C or -80°C. Avoid repeated freeze.

## Images



### Immunofluorescence

**Image 1.** Immunofluorescent analysis of 293 cells using ABIN7161118 at dilution of 1:100 and Alexa Fluor 488-conjugated AffiniPure Goat Anti-Rabbit IgG(H+L)



### Western Blotting

**Image 2.** Western blot All lanes: NDFIP1 antibody at 8 µg/mL Lane 1: 293T whole cell lysate Lane 2: HeLa whole cell lysate Secondary Goat polyclonal to rabbit IgG at 1/10000 dilution Predicted band size: 25, 17 kDa Observed band size: 25 kDa



### Immunohistochemistry

**Image 3.** Immunohistochemistry of paraffin-embedded human breast cancer using ABIN7161118 at dilution of 1:100

Please check the [product details page](#) for more images. Overall 4 images are available for ABIN7161118.