



[Go to Product page](#)

Datasheet for ABIN7161137

## anti-NAE1 antibody (Regulatory Subunit)

### 2 Images

#### Overview

Quantity:	100 µL
Target:	NAE1
Binding Specificity:	AA 1-220, Regulatory Subunit
Reactivity:	Human
Host:	Rabbit
Clonality:	Polyclonal
Conjugate:	This NAE1 antibody is un-conjugated
Application:	Western Blotting (WB), ELISA, Immunohistochemistry (IHC)

#### Product Details

Immunogen:	Recombinant Human NEDD8-activating enzyme E1 regulatory subunit protein (1-220AA)
Isotype:	IgG
Cross-Reactivity:	Human, Mouse
Purification:	Antigen Affinity Purified

#### Target Details

Target:	NAE1
Alternative Name:	NAE1 ( <a href="#">NAE1 Products</a> )
Background:	Background: Regulatory subunit of the dimeric UBA3-NAE1 E1 enzyme. E1 activates NEDD8 by first adenylating its C-terminal glycine residue with ATP, thereafter linking this residue to the

## Target Details

---

side chain of the catalytic cysteine, yielding a NEDD8-UBA3 thioester and free AMP. E1 finally transfers NEDD8 to the catalytic cysteine of UBE2M. Necessary for cell cycle progression through the S-M checkpoint. Overexpression of NAE1 causes apoptosis through deregulation of NEDD8 conjugation.

Aliases: 59 kDa antibody, A 116A10.1 antibody, Amyloid beta precursor protein binding protein 1 59kD antibody, Amyloid beta precursor protein binding protein 1 59 kDa antibody, Amyloid beta precursor protein binding protein 1 antibody, Amyloid beta precursor protein binding protein 1, 59 kDa antibody, Amyloid beta precursor protein-binding protein 1 antibody, Amyloid protein binding protein 1 antibody, Amyloid protein-binding protein 1 antibody, APP BP1 antibody, APP-BP1 antibody, APPBP 1 antibody, APPBP1 antibody, HPP 1 antibody, HPP1 antibody, NAE 1 antibody, NAE1 antibody, NEDD8 activating enzyme E1 regulatory subunit antibody, NEDD8 activating enzyme E1 subunit 1 antibody, NEDD8 activating enzyme E1 subunit antibody, NEDD8-activating enzyme E1 regulatory subunit antibody, Proto oncogene protein 1 antibody, Proto-oncogene protein 1 antibody, Protooncogene protein 1 antibody, ula 1 antibody, ULA1\_HUMAN antibody

---

UniProt: [Q13564](#)

## Application Details

---

Application Notes: Recommended dilution: WB:1:1000-1:5000, IHC:1:20-1:200,

Restrictions: For Research Use only

## Handling

---

Format: Liquid

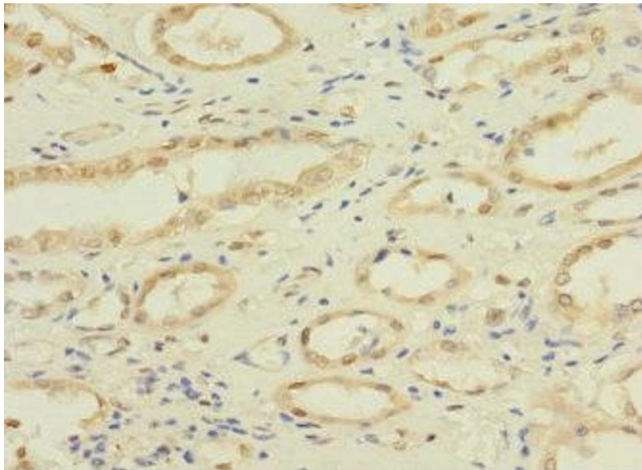
Buffer: PBS with 0.02 % sodium azide, 50 % glycerol, pH 7.3.

Preservative: Sodium azide

Precaution of Use: This product contains Sodium azide: a POISONOUS AND HAZARDOUS SUBSTANCE which should be handled by trained staff only.

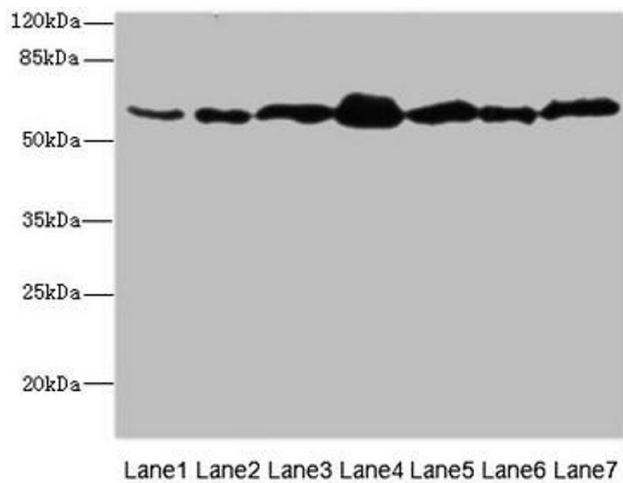
Storage: -20 °C,-80 °C

Storage Comment: Upon receipt, store at -20°C or -80°C. Avoid repeated freeze.



### Immunohistochemistry

**Image 1.** Immunohistochemistry of paraffin-embedded human kidney tissue using ABIN7161137 at dilution of 1:100



### Western Blotting

**Image 2.** Western blot All lanes: NAE1 antibody at 1.85  $\mu$ g/mL Lane 1: Mouse liver tissue Lane 2: Mouse kidney tissue Lane 3: Mouse skeletal muscle tissue Lane 4: 293T whole cell lysate Lane 5: A431 whole cell lysate Lane 6: K562 whole cell lysate Lane 7: Hela whole cell lysate Secondary Goat polyclonal to rabbit IgG at 1/10000 dilution Predicted band size: 61, 60, 51 kDa Observed band size: 61 kDa