

Datasheet for ABIN7161148  
**anti-Nephrin antibody (AA 23-257)**

## 3 Images

[Go to Product page](#)

## Overview

Quantity:	100 µg
Target:	Nephrin (NPHS1)
Binding Specificity:	AA 23-257
Reactivity:	Human
Host:	Rabbit
Clonality:	Polyclonal
Conjugate:	This Nephrin antibody is un-conjugated
Application:	Western Blotting (WB), Immunohistochemistry (IHC), ELISA, Immunofluorescence (IF)

## Product Details

Immunogen:	Recombinant Human Nephrin protein (23-257AA)
Isotype:	IgG
Cross-Reactivity:	Human
Purification:	>95%, Protein G purified

## Target Details

Target:	Nephrin (NPHS1)
Alternative Name:	NPHS1 ( <a href="#">NPHS1 Products</a> )
Background:	Background: Seems to play a role in the development or function of the kidney glomerular filtration barrier. Regulates glomerular vascular permeability. May anchor the podocyte slit

## Target Details

diaphragm to the actin cytoskeleton. Plays a role in skeletal muscle formation through regulation of myoblast fusion.

Aliases: CNF antibody, Nephrin antibody, Nephrosis 1 congenital Finnish type antibody, Nephrosis 1, congenital, Finnish type (nephrin) antibody, NPHN antibody, NPHN\_HUMAN antibody, NPHS 1 antibody, Nphs1 antibody, Renal glomerulus specific cell adhesion receptor antibody, Renal glomerulus-specific cell adhesion receptor antibody

UniProt: [O60500](#)

Pathways: [Regulation of Actin Filament Polymerization](#), [Skeletal Muscle Fiber Development](#)

## Application Details

Application Notes: Recommended dilution: WB:1:500-1:5000, IHC:1:200-1:500, IF:1:50-1:200,

Restrictions: For Research Use only

## Handling

Format: Liquid

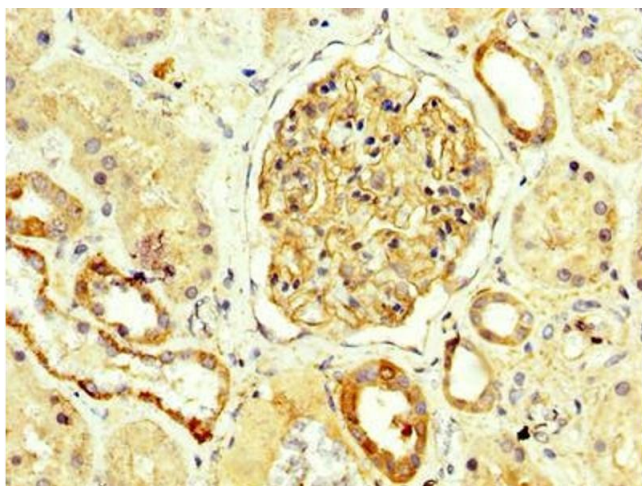
Buffer: Preservative: 0.03 % Proclin 300  
Constituents: 50 % Glycerol, 0.01M PBS, PH 7.4

Preservative: ProClin

Precaution of Use: This product contains ProClin: a POISONOUS AND HAZARDOUS SUBSTANCE which should be handled by trained staff only.

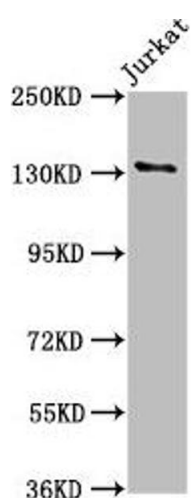
Storage: -20 °C,-80 °C

Storage Comment: Upon receipt, store at -20°C or -80°C. Avoid repeated freeze.



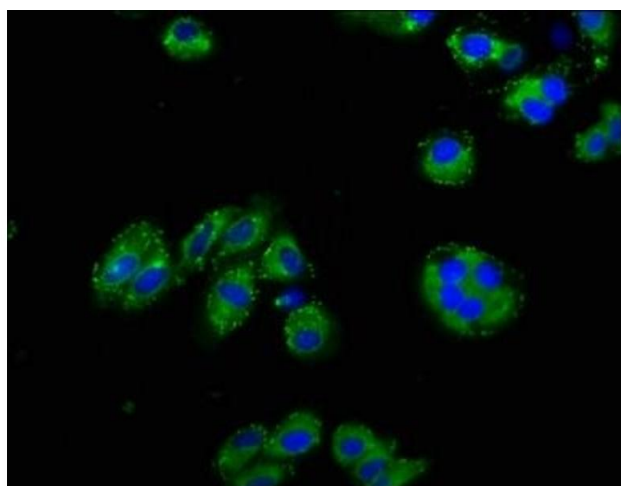
### Immunohistochemistry

**Image 1.** IHC image of ABIN7161148 diluted at 1:250 and staining in paraffin-embedded human kidney tissue performed on a Leica Bond™ system. After dewaxing and hydration, antigen retrieval was mediated by high pressure in a citrate buffer (pH 6.0). Section was blocked with 10% normal goat serum 30min at RT. Then primary antibody (1% BSA) was incubated at 4°C overnight. The primary is detected by a biotinylated secondary antibody and visualized using an HRP conjugated SP system.



### Western Blotting

**Image 2.** Western Blot Positive WB detected in: Jurkat whole cell lysate All lanes: NPHS1 antibody at 5.6 µg/mL Secondary Goat polyclonal to rabbit IgG at 1/50000 dilution Predicted band size: 135, 131 kDa Observed band size: 135 kDa



### Immunofluorescence

**Image 3.** Immunofluorescence staining of HepG2 cells with ABIN7161148 at 1:125, counter-stained with DAPI. The cells were fixed in 4% formaldehyde, permeabilized using 0.2% Triton X-100 and blocked in 10% normal Goat Serum. The cells were then incubated with the antibody overnight at 4°C. The secondary antibody was Alexa Fluor 488-conjugated AffiniPure Goat Anti-Rabbit IgG(H+L).