

Datasheet for ABIN7161179
anti-Nestin antibody (AA 1321-1569)



[Go to Product page](#)

2 Images

Overview

Quantity:	100 µg
Target:	Nestin (NES)
Binding Specificity:	AA 1321-1569
Reactivity:	Human
Host:	Rabbit
Clonality:	Polyclonal
Conjugate:	This Nestin antibody is un-conjugated
Application:	Immunohistochemistry (IHC), ELISA, Immunofluorescence (IF)

Product Details

Immunogen:	Recombinant Human Nestin protein (1321-1569AA)
Isotype:	IgG
Cross-Reactivity:	Human
Purification:	>95%, Protein G purified

Target Details

Target:	Nestin (NES)
Alternative Name:	NES (NES Products)
Background:	Background: Required for brain and eye development. Promotes the disassembly of phosphorylated vimentin intermediate filaments (IF) during mitosis and may play a role in the

Target Details

trafficking and distribution of IF proteins and other cellular factors to daughter cells during progenitor cell division. Required for survival, renewal and mitogen-stimulated proliferation of neural progenitor cells (By similarity).

Aliases: ESTM 46 antibody, FLJ 21841 antibody, FLJ21841 antibody, Intermediate filament protein antibody, Nbla00170 antibody, nes antibody, NEST_HUMAN antibody, Nestin antibody

UniProt: [P48681](#)

Application Details

Application Notes: Recommended dilution: IHC:1:20-1:200, IF:1:50-1:200,

Restrictions: For Research Use only

Handling

Format: Liquid

Buffer: Preservative: 0.03 % Proclin 300
Constituents: 50 % Glycerol, 0.01M PBS, PH 7.4

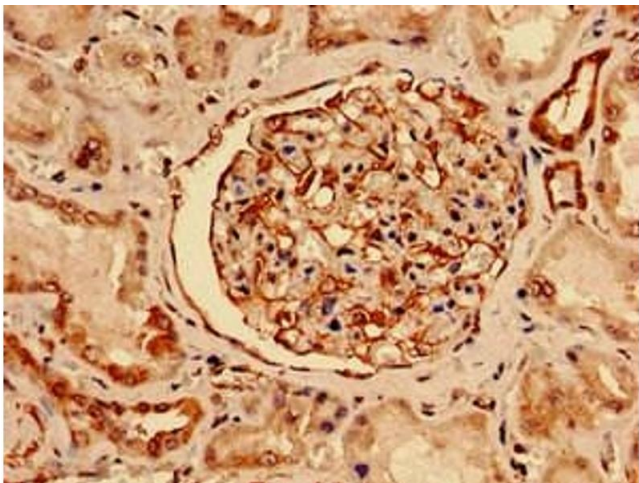
Preservative: ProClin

Precaution of Use: This product contains ProClin: a POISONOUS AND HAZARDOUS SUBSTANCE which should be handled by trained staff only.

Storage: -20 °C,-80 °C

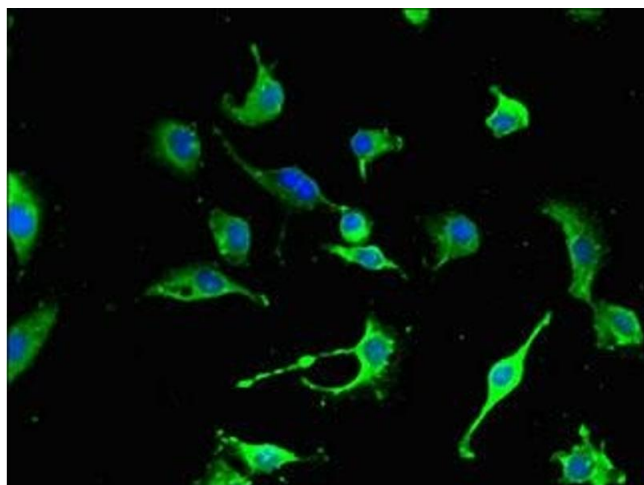
Storage Comment: Upon receipt, store at -20°C or -80°C. Avoid repeated freeze.

Images



Immunocytochemistry

Image 1. Immunocytochemistry analysis of human kidney tissue using ABIN7161179 at dilution of 1:100



Immunofluorescence

Image 2. Immunofluorescent analysis of U251 cells using ABIN7161179 at dilution of 1:100 and Alexa Fluor 488-conjugated AffiniPure Goat Anti-Rabbit IgG(H+L)