

Datasheet for ABIN7161215
anti-Neurexin 1 antibody (AA 31-310)[Go to Product page](#)

1 Image

Overview

Quantity:	100 µL
Target:	Neurexin 1 (NRXN1)
Binding Specificity:	AA 31-310
Reactivity:	Human
Host:	Rabbit
Clonality:	Polyclonal
Conjugate:	This Neurexin 1 antibody is un-conjugated
Application:	Western Blotting (WB), ELISA

Product Details

Immunogen:	Recombinant Human Neurexin-1 protein (31-310AA)
Isotype:	IgG
Cross-Reactivity:	Human
Purification:	Antigen Affinity Purified

Target Details

Target:	Neurexin 1 (NRXN1)
Alternative Name:	NRXN1 (NRXN1 Products)
Background:	Background: Cell surface protein involved in cell-cell-interactions, exocytosis of secretory granules and regulation of signal transmission. Function is isoform-specific. Alpha-type

Target Details

isoforms have a long N-terminus with six laminin G-like domains and play an important role in synaptic signal transmission. Alpha-type isoforms play a role in the regulation of calcium channel activity and Ca(2+)-triggered neurotransmitter release at synapses and at neuromuscular junctions. They play an important role in Ca(2+)-triggered exocytosis of secretory granules in pituitary gland. They may effect their functions at synapses and in endocrine cells via their interactions with proteins from the exocytotic machinery. Likewise, alpha-type isoforms play a role in regulating the activity of postsynaptic NMDA receptors, a subtype of glutamate-gated ion channels. Both alpha-type and beta-type isoforms may play a role in the formation or maintenance of synaptic junctions via their calcium-dependent interactions (via the extracellular domains) with neuroligin family members, CBLN1 or CBLN2. In vitro, triggers the de novo formation of presynaptic structures. May be involved in specification of excitatory synapses. Alpha-type isoforms were first identified as receptors for alpha-latrotoxin from spider venom (By similarity).

Aliases: DKFZp313P2036 antibody, FLJ35941 antibody, Hs.22998 antibody, KIAA0578 antibody, Neurexin 1 alpha antibody, Neurexin 1 beta antibody, Neurexin I-alpha antibody, Neurexin-1 antibody, Neurexin-1-alpha antibody, NRX1A_HUMAN antibody, NRXN1 antibody, PTHSL2 antibody, SCZD17 antibody

UniProt: [Q9ULB1](#)

Pathways: [Synaptic Membrane](#), [Skeletal Muscle Fiber Development](#)

Application Details

Application Notes: Recommended dilution: WB:1:1000-1:5000,

Restrictions: For Research Use only

Handling

Format: Liquid

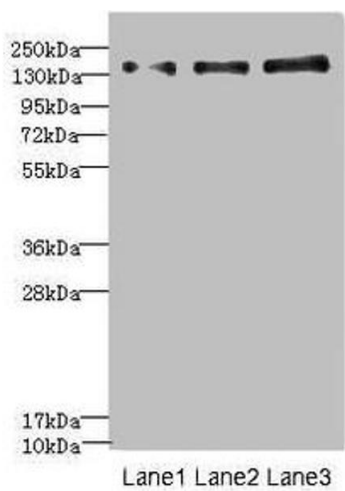
Buffer: PBS with 0.02 % sodium azide, 50 % glycerol, pH 7.3.

Preservative: Sodium azide

Precaution of Use: This product contains Sodium azide: a POISONOUS AND HAZARDOUS SUBSTANCE which should be handled by trained staff only.

Storage: -20 °C,-80 °C

Storage Comment: Upon receipt, store at -20°C or -80°C. Avoid repeated freeze.



Western Blotting

Image 1. Western blot All lanes: NRXN1 antibody at 1.57 μ g/mL Lane 1: Jurkat whole cell lysate Lane 2: Hela whole cell lysate Lane 3: HepG2 whole cell lysate Secondary Goat polyclonal to rabbit IgG at 1/10000 dilution Predicted band size: 162, 165, 170, 47, 16, 51 kDa Observed band size: 162 kDa