

Datasheet for ABIN7161230  
**anti-NXPH2 antibody (AA 23-264)**



[Go to Product page](#)

1 Image

## Overview

Quantity:	100 µg
Target:	NXPH2
Binding Specificity:	AA 23-264
Reactivity:	Human
Host:	Rabbit
Clonality:	Polyclonal
Conjugate:	This NXPH2 antibody is un-conjugated
Application:	ELISA, Immunohistochemistry (IHC)

## Product Details

Immunogen:	Recombinant Human Neurexophilin-2 protein (23-264AA)
Isotype:	IgG
Cross-Reactivity:	Human
Purification:	>95%, Protein G purified

## Target Details

Target:	NXPH2
Alternative Name:	NXPH2 ( <a href="#">NXPH2 Products</a> )
Background:	Background: May be signaling molecules that resemble neuropeptides and that act by binding to alpha-neurexins and possibly other receptors.

## Target Details

---

Aliases: MGC125477 antibody, MGC125478 antibody, MGC125479 antibody, MGC125480 antibody, Neurexophilin 2 antibody, Neurexophilin-2 antibody, NPH2 antibody, Nxph2 antibody, NXPH2\_HUMAN antibody

---

UniProt: [O95156](#)

---

## Application Details

---

Application Notes: Recommended dilution: IHC:1:20-1:200,

---

Restrictions: For Research Use only

---

## Handling

---

Format: Liquid

---

Buffer: Preservative: 0.03 % Proclin 300  
Constituents: 50 % Glycerol, 0.01M PBS, PH 7.4

---

Preservative: ProClin

---

Precaution of Use: This product contains ProClin: a POISONOUS AND HAZARDOUS SUBSTANCE which should be handled by trained staff only.

---

Storage: -20 °C,-80 °C

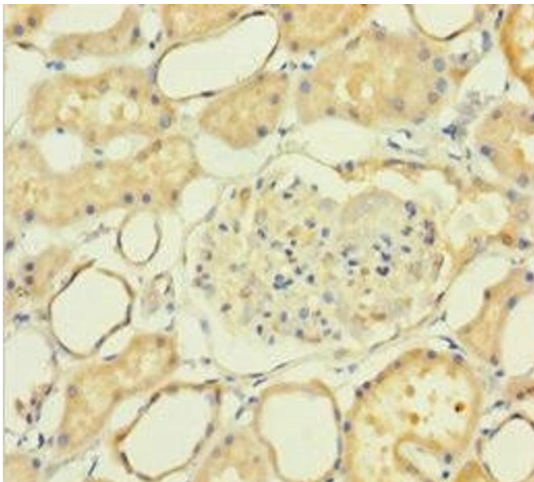
---

Storage Comment: Upon receipt, store at -20°C or -80°C. Avoid repeated freeze.

---

## Images

---



### Immunohistochemistry

**Image 1.** Immunohistochemistry of paraffin-embedded human kidney tissue using ABIN7161230 at dilution of 1:100