

Datasheet for ABIN7161274  
**anti-NEFH antibody (AA 825-1003)**



[Go to Product page](#)

2 Images

## Overview

Quantity:	100 µL
Target:	NEFH
Binding Specificity:	AA 825-1003
Reactivity:	Human
Host:	Rabbit
Clonality:	Polyclonal
Conjugate:	This NEFH antibody is un-conjugated
Application:	Immunohistochemistry (IHC), ELISA, Immunofluorescence (IF)

## Product Details

Immunogen:	Recombinant Human Neurofilament heavy polypeptide protein (825-1003AA)
Isotype:	IgG
Cross-Reactivity:	Human
Purification:	>95%, Protein G purified

## Target Details

Target:	NEFH
Alternative Name:	NEFH ( <a href="#">NEFH Products</a> )
Background:	Background: Neurofilaments usually contain three intermediate filament proteins: L, M, and H which are involved in the maintenance of neuronal caliber. NF-H has an important function in

## Target Details

mature axons that is not subverted by the two smaller NF proteins.

Aliases: 200 kDa neurofilament protein antibody, CMT2CC antibody, Nefh antibody, Neurofilament heavy polypeptide 200 kDa antibody, Neurofilament heavy polypeptide antibody, Neurofilament triplet H protein antibody, NF H antibody, NF-H antibody, NFH antibody, NFH\_HUMAN antibody

UniProt: [P12036](#)

## Application Details

Application Notes: Recommended dilution: IHC:1:200-1:500, IF:1:100-1:500,

Restrictions: For Research Use only

## Handling

Format: Liquid

Buffer: Preservative: 0.03 % Proclin 300  
Constituents: 50 % Glycerol, 0.01M PBS, PH 7.4

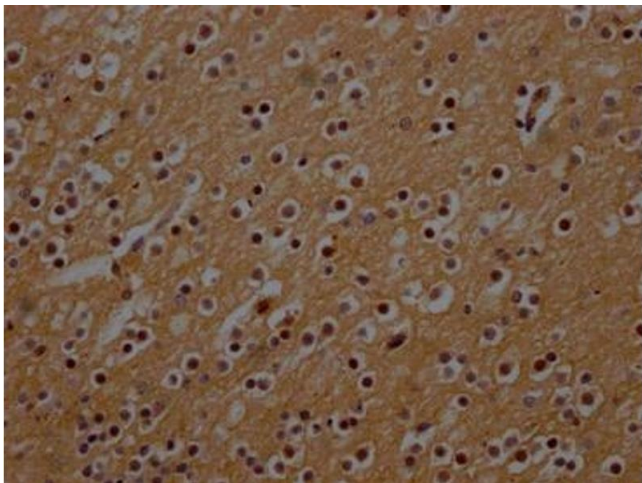
Preservative: ProClin

Precaution of Use: This product contains ProClin: a POISONOUS AND HAZARDOUS SUBSTANCE which should be handled by trained staff only.

Storage: -20 °C,-80 °C

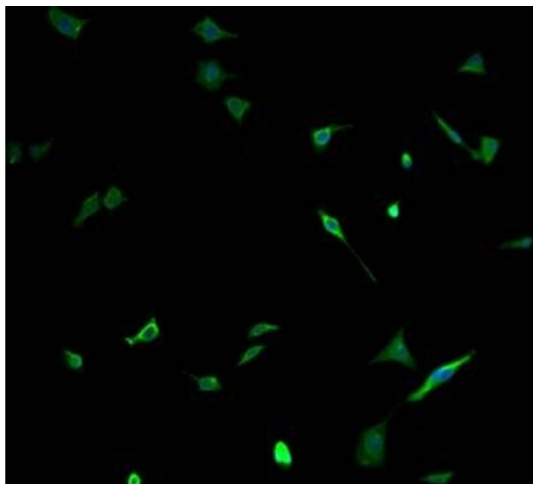
Storage Comment: Upon receipt, store at -20°C or -80°C. Avoid repeated freeze.

## Images



### Immunohistochemistry

**Image 1.** IHC image of ABIN7161274 diluted at 1:300 and staining in paraffin-embedded human brain tissue performed on a Leica Bond™ system. After dewaxing and hydration, antigen retrieval was mediated by high pressure in a citrate buffer ( pH 6.0). Section was blocked with 10 % normal goat serum 30 min at RT. Then primary antibody (1 % BSA) was incubated at 4 °C overnight. The primary is detected by a Goat anti-rabbit polymer IgG labeled by HRP



and visualized using 0.05 % DAB.

### Immunofluorescence

**Image 2.** Immunofluorescence staining of SH-SY5Y cells with ABIN7161274 at 1:100, counter-stained with DAPI. The cells were fixed in 4 % formaldehyde and blocked in 10 % normal Goat Serum. The cells were then incubated with the antibody overnight at 4 °C. The secondary antibody was Alexa Fluor 488-conjugated AffiniPure Goat Anti-Rabbit IgG(H+L).