

Datasheet for ABIN7161298  
**anti-NOTCH2 antibody (AA 59-250)**[Go to Product page](#)

## 2 Images

## Overview

Quantity:	100 µg
Target:	NOTCH2
Binding Specificity:	AA 59-250
Reactivity:	Human
Host:	Rabbit
Clonality:	Polyclonal
Conjugate:	This NOTCH2 antibody is un-conjugated
Application:	ELISA, Immunohistochemistry (IHC), Immunofluorescence (IF)

## Product Details

Immunogen:	Recombinant Human Neurogenic locus notch homolog protein 2 protein (59-250AA)
Isotype:	IgG
Cross-Reactivity:	Human
Purification:	>95%, Protein G purified

## Target Details

Target:	NOTCH2
Alternative Name:	NOTCH2 ( <a href="#">NOTCH2 Products</a> )
Background:	Background: Functions as a receptor for membrane-bound ligands Jagged1, Jagged2 and Delta1 to regulate cell-fate determination. Upon ligand activation through the released notch

## Target Details

intracellular domain (NICD) it forms a transcriptional activator complex with RBPJ/RBPSUH and activates genes of the enhancer of split locus. Affects the implementation of differentiation, proliferation and apoptotic programs (By similarity). Involved in bone remodeling and homeostasis. In collaboration with RELA/p65 enhances NFATc1 promoter activity and positively regulates RANKL-induced osteoclast differentiation. Positively regulates self-renewal of liver cancer cells (PubMed:25985737).

Aliases: AGS2 antibody, hN2 antibody, Motch B antibody, N2 antibody, N2ECD antibody, N2ICD antibody, neurogenic locus notch homolog protein 2 antibody, NOTC2\_HUMAN antibody, Notch 2 antibody, Notch 2 intracellular domain antibody, Notch Drosophila homolog 2 antibody, Notch homolog 2 antibody, Notch homolog 2 Drosophila antibody, Notch2 antibody

UniProt: [Q04721](#)

Pathways: [Notch Signaling](#), [Stem Cell Maintenance](#)

## Application Details

Application Notes: Recommended dilution: IHC:1:20-1:200, IF:1:50-1:200,

Restrictions: For Research Use only

## Handling

Format: Liquid

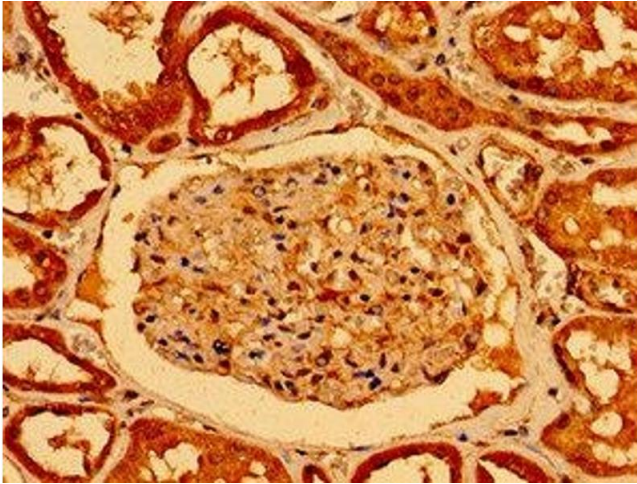
Buffer: Preservative: 0.03 % Proclin 300  
Constituents: 50 % Glycerol, 0.01M PBS, pH 7.4

Preservative: ProClin

Precaution of Use: This product contains ProClin: a POISONOUS AND HAZARDOUS SUBSTANCE which should be handled by trained staff only.

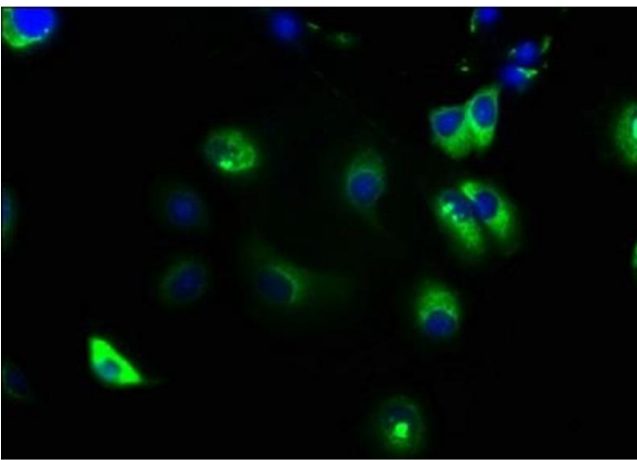
Storage: -20 °C,-80 °C

Storage Comment: Upon receipt, store at -20°C or -80°C. Avoid repeated freeze.



#### Immunohistochemistry

**Image 1.** Immunohistochemistry of paraffin-embedded human kidney tissue using ABIN7161298 at dilution of 1:100



#### Immunofluorescence

**Image 2.** Immunofluorescence staining of MCF-7 cells with ABIN7161298 at 1:133, counter-stained with DAPI. The cells were fixed in 4% formaldehyde, permeabilized using 0.2% Triton X-100 and blocked in 10% normal Goat Serum. The cells were then incubated with the antibody overnight at 4°C. The secondary antibody was Alexa Fluor 488-conjugated AffiniPure Goat Anti-Rabbit IgG(H+L).