



[Go to Product page](#)

Datasheet for ABIN7161302

anti-NOTCH3 antibody (AA 1301-1496)

2 Images

Overview

Quantity:	100 µg
Target:	NOTCH3
Binding Specificity:	AA 1301-1496
Reactivity:	Human
Host:	Rabbit
Clonality:	Polyclonal
Conjugate:	This NOTCH3 antibody is un-conjugated
Application:	ELISA, Immunohistochemistry (IHC)

Product Details

Immunogen:	Recombinant Human Neurogenic locus notch homolog protein 3 protein (1301-1496AA)
Isotype:	IgG
Cross-Reactivity:	Human
Purification:	>95%, Protein G purified

Target Details

Target:	NOTCH3
Alternative Name:	NOTCH3 (NOTCH3 Products)
Background:	Background: Functions as a receptor for membrane-bound ligands Jagged1, Jagged2 and Delta1 to regulate cell-fate determination. Upon ligand activation through the released notch

Target Details

intracellular domain (NICD) it forms a transcriptional activator complex with RBPJ/RBPSUH and activates genes of the enhancer of split locus. Affects the implementation of differentiation, proliferation and apoptotic programs (By similarity).

Aliases: CADASIL antibody, CASIL antibody, NOTC3_HUMAN antibody, Notch 3 antibody, Notch 3 intracellular domain antibody, Notch homolog 3 antibody, Notch3 antibody

UniProt: [Q9UM47](#)

Pathways: [Notch Signaling](#)

Application Details

Application Notes: Recommended dilution: IHC:1:20-1:200,

Restrictions: For Research Use only

Handling

Format: Liquid

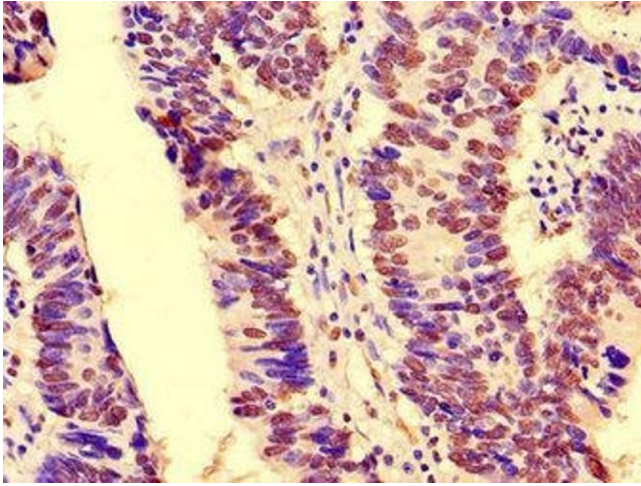
Buffer: Preservative: 0.03 % Proclin 300
Constituents: 50 % Glycerol, 0.01M PBS, PH 7.4

Preservative: ProClin

Precaution of Use: This product contains ProClin: a POISONOUS AND HAZARDOUS SUBSTANCE which should be handled by trained staff only.

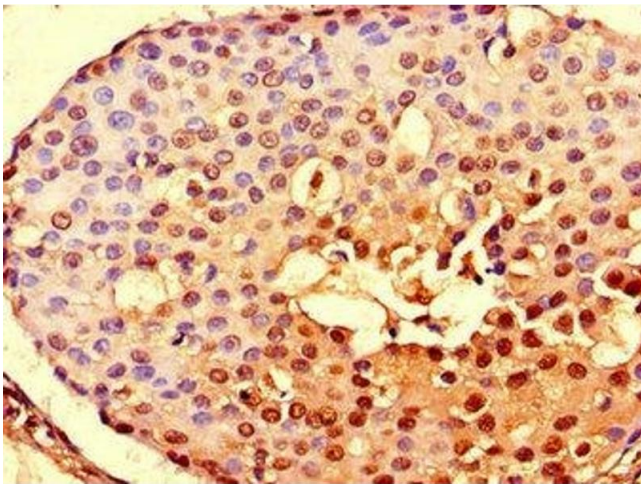
Storage: -20 °C,-80 °C

Storage Comment: Upon receipt, store at -20°C or -80°C. Avoid repeated freeze.



Immunohistochemistry

Image 1. Immunohistochemistry of paraffin-embedded human colon cancer using ABIN7161302 at dilution of 1:100



Immunohistochemistry

Image 2. Immunohistochemistry of paraffin-embedded human breast cancer using ABIN7161302 at dilution of 1:100