

Datasheet for ABIN7161314
anti-Neurologin 1 antibody (AA 51-300)[Go to Product page](#)

3 Images

Overview

Quantity:	100 µg
Target:	Neurologin 1 (NLGN1)
Binding Specificity:	AA 51-300
Reactivity:	Human
Host:	Rabbit
Clonality:	Polyclonal
Conjugate:	This Neurologin 1 antibody is un-conjugated
Application:	Immunohistochemistry (IHC), ELISA, Immunofluorescence (IF)

Product Details

Immunogen:	Recombinant Human Neurologin-1 protein (51-300AA)
Isotype:	IgG
Cross-Reactivity:	Human
Purification:	>95%, Protein G purified

Target Details

Target:	Neurologin 1 (NLGN1)
Alternative Name:	NLGN1 (NLGN1 Products)
Background:	Background: Cell surface protein involved in cell-cell-interactions via its interactions with neurexin family members. Plays a role in synapse function and synaptic signal transmission,

Target Details

and probably mediates its effects by recruiting and clustering other synaptic proteins. May promote the initial formation of synapses, but is not essential for this. In vitro, triggers the de novo formation of presynaptic structures. May be involved in specification of excitatory synapses. Required to maintain wakefulness quality and normal synchrony of cerebral cortex activity during wakefulness and sleep.

Aliases: NLG 1 antibody, KIAA1070 antibody, MGC45115 antibody, Neuroligin-1 antibody, NL1 antibody, NLG1 antibody, Nlgn1 antibody, NLGN1_HUMAN antibody

UniProt: [Q8N2Q7](#)

Pathways: [Synaptic Membrane](#), [Synaptic Vesicle Exocytosis](#)

Application Details

Application Notes: Recommended dilution: IHC:1:20-1:200, IF:1:50-1:200,

Restrictions: For Research Use only

Handling

Format: Liquid

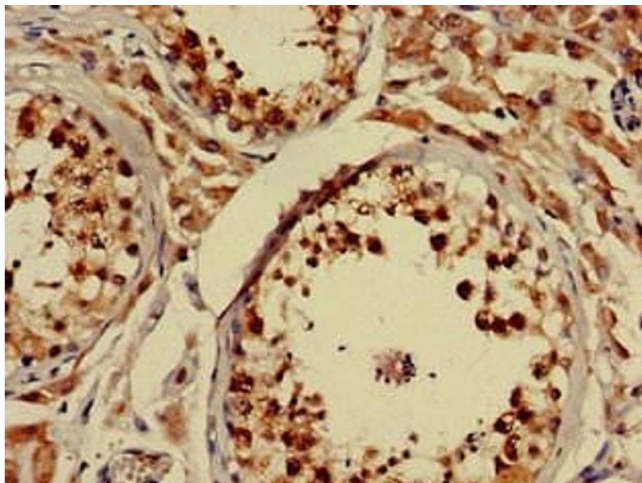
Buffer: Preservative: 0.03 % Proclin 300
Constituents: 50 % Glycerol, 0.01M PBS, pH 7.4

Preservative: ProClin

Precaution of Use: This product contains ProClin: a POISONOUS AND HAZARDOUS SUBSTANCE which should be handled by trained staff only.

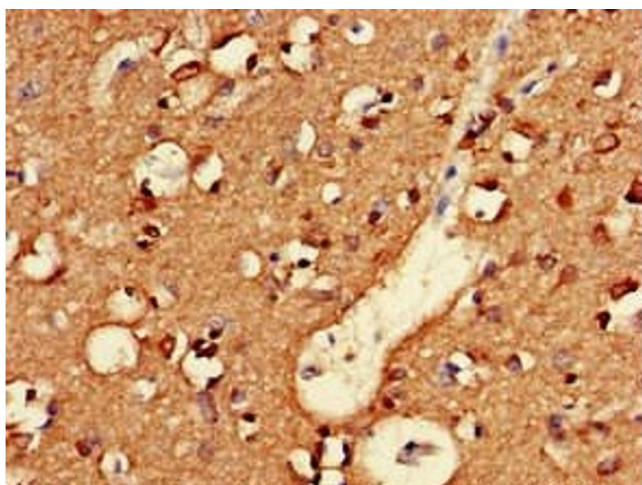
Storage: -20 °C,-80 °C

Storage Comment: Upon receipt, store at -20°C or -80°C. Avoid repeated freeze.



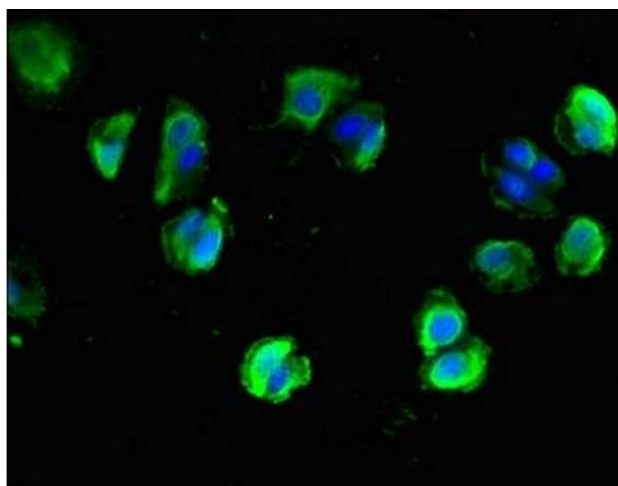
Immunohistochemistry

Image 1. Immunohistochemistry of paraffin-embedded human testis tissue using ABIN7161314 at dilution of 1:100



Immunohistochemistry

Image 2. Immunohistochemistry of paraffin-embedded human brain tissue using ABIN7161314 at dilution of 1:100



Immunofluorescence

Image 3. Immunofluorescent analysis of MCF-7 cells using ABIN7161314 at dilution of 1:100 and Alexa Fluor 488-conjugated AffiniPure Goat Anti-Rabbit IgG(H+L)