

Datasheet for ABIN7161327
anti-NLN antibody (AA 109-241)[Go to Product page](#)

3 Images

Overview

Quantity:	100 µg
Target:	NLN
Binding Specificity:	AA 109-241
Reactivity:	Human
Host:	Rabbit
Clonality:	Polyclonal
Conjugate:	This NLN antibody is un-conjugated
Application:	Western Blotting (WB), ELISA, Immunohistochemistry (IHC), Immunofluorescence (IF)

Product Details

Immunogen:	Recombinant Human Neurolysin, mitochondrial protein (109-241AA)
Isotype:	IgG
Cross-Reactivity:	Human
Purification:	>95%, Protein G purified

Target Details

Target:	NLN
Alternative Name:	NLN (NLN Products)
Background:	Background: Hydrolyzes oligopeptides such as neurotensin, bradykinin and dynorphin A. Aliases: AGTBP antibody, Angiotensin binding protein antibody, Angiotensin-binding protein

Target Details

antibody, DKFZp564F123 antibody, EC 3.4.24.16 antibody, EP24.16 antibody, FLJ23002 antibody, KIAA1226 antibody, MEP antibody, Microsomal endopeptidase antibody, mitochondrial antibody, Mitochondrial oligopeptidase M antibody, MOP antibody, NEUL_HUMAN antibody, neurolysin (metallopeptidase M3 family) antibody, Neurolysin antibody, Neurolysin, mitochondrial precursor antibody, Neurotensin endopeptidase antibody, Nln antibody

UniProt: [Q9BYT8](#)

Application Details

Application Notes: Recommended dilution: WB:1:500-1:5000, IHC:1:200-1:500, IF:1:50-1:200,

Restrictions: For Research Use only

Handling

Format: Liquid

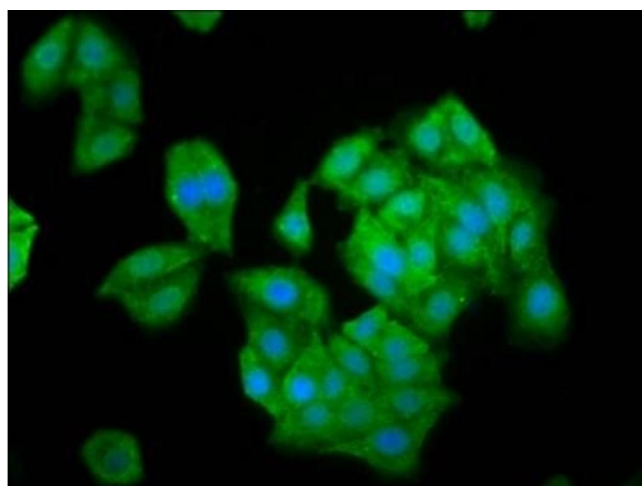
Buffer: Preservative: 0.03 % Proclin 300
Constituents: 50 % Glycerol, 0.01M PBS, pH 7.4

Preservative: ProClin

Precaution of Use: This product contains ProClin: a POISONOUS AND HAZARDOUS SUBSTANCE which should be handled by trained staff only.

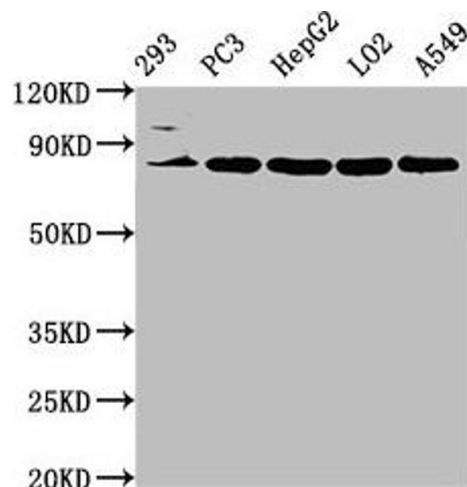
Storage: -20 °C, -80 °C

Storage Comment: Upon receipt, store at -20°C or -80°C. Avoid repeated freeze.



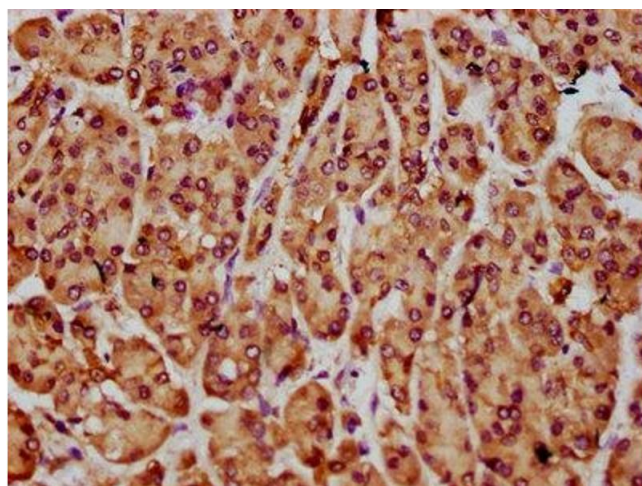
Immunofluorescence

Image 1. Immunofluorescence staining of HepG2 cells with ABIN7161327 at 1:100, counter-stained with DAPI. The cells were fixed in 4% formaldehyde, permeabilized using 0.2% Triton X-100 and blocked in 10% normal Goat Serum. The cells were then incubated with the antibody overnight at 4°C. The secondary antibody was Alexa Fluor 488-conjugated AffiniPure Goat Anti-Rabbit IgG(H+L).



Western Blotting

Image 2. Western Blot Positive WB detected in: 293 whole cell lysate, PC-3 whole cell lysate, HepG2 whole cell lysate, LO2 whole cell lysate, A549 whole cell lysate. All lanes: NLN antibody at 3.2 µg/mL. Secondary Goat polyclonal to rabbit IgG at 1/50000 dilution. Predicted band size: 81 kDa. Observed band size: 81 kDa.



Immunohistochemistry

Image 3. IHC image of ABIN7161327 diluted at 1:300 and staining in paraffin-embedded human pancreatic cancer performed on a Leica Bond™ system. After dewaxing and hydration, antigen retrieval was mediated by high pressure in a citrate buffer (pH 6.0). Section was blocked with 10% normal goat serum 30min at RT. Then primary antibody (1% BSA) was incubated at 4°C overnight. The primary is detected by a biotinylated secondary antibody and visualized using an HRP conjugated SP system.