

Datasheet for ABIN7161352  
**anti-CHRNA2 antibody (AA 322-458)**[Go to Product page](#)

## 3 Images

## Overview

Quantity:	100 µg
Target:	CHRNA2
Binding Specificity:	AA 322-458
Reactivity:	Human
Host:	Rabbit
Clonality:	Polyclonal
Conjugate:	This CHRNA2 antibody is un-conjugated
Application:	Western Blotting (WB), ELISA, Immunohistochemistry (IHC), Immunofluorescence (IF)

## Product Details

Immunogen:	Recombinant Human Neuronal acetylcholine receptor subunit beta-2 protein (322-458AA)
Isotype:	IgG
Cross-Reactivity:	Human, Rat
Purification:	>95%, Protein G purified

## Target Details

Target:	CHRNA2
Alternative Name:	CHRNA2 ( <a href="#">CHRNA2 Products</a> )
Background:	Background: After binding acetylcholine, the AChR responds by an extensive change in conformation that affects all subunits and leads to opening of an ion-conducting channel

## Target Details

across the plasma membrane permeable to sodium ions.

Aliases: Acetylcholine receptor beta 2 neural antibody, ACHB2\_HUMAN antibody, ACHN antibody, AChR antibody, Acrb 2 antibody, Acrb2 antibody, b2 nAChR antibody, Cholinergic receptor nicotinic beta 2 antibody, Cholinergic receptor nicotinic beta polypeptide 2 antibody, Cholinergic receptor nicotinic beta polypeptide 2 neuronal antibody, cholinergic receptor, nicotinic, beta 2 (neuronal) antibody, Chrnb2 antibody, EFNL 3 antibody, EFNL3 antibody, nAChRB2 antibody, Neuronal acetylcholine receptor protein beta 2 chain precursor antibody, Neuronal acetylcholine receptor protein subunit beta 2 antibody, Neuronal acetylcholine receptor subunit beta-2 antibody, Neuronal nicotinic acetylcholine receptor beta 2 antibody

UniProt: [P17787](#)

Pathways: [Sensory Perception of Sound](#), [Feeding Behaviour](#)

## Application Details

Application Notes: Recommended dilution: WB:1:500-1:5000, IHC:1:200-1:500, IF:1:50-1:200,

Restrictions: For Research Use only

## Handling

Format: Liquid

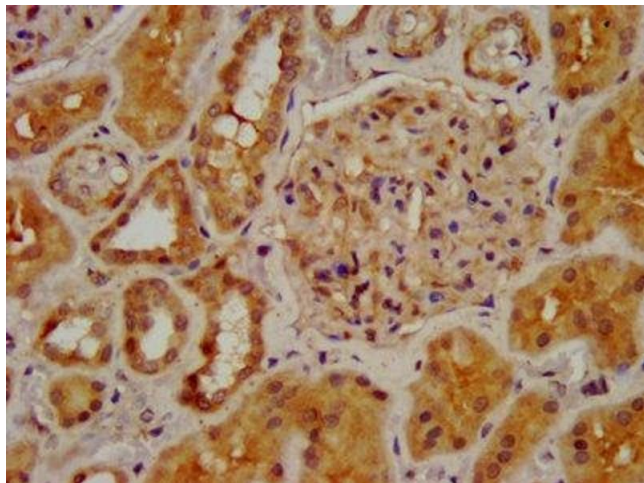
Buffer: Preservative: 0.03 % Proclin 300  
Constituents: 50 % Glycerol, 0.01M PBS, pH 7.4

Preservative: ProClin

Precaution of Use: This product contains ProClin: a POISONOUS AND HAZARDOUS SUBSTANCE which should be handled by trained staff only.

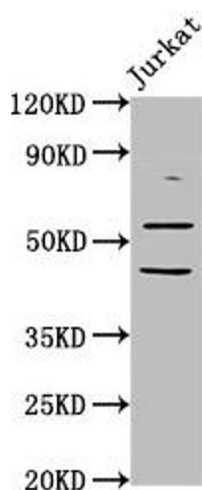
Storage: -20 °C, -80 °C

Storage Comment: Upon receipt, store at -20°C or -80°C. Avoid repeated freeze.



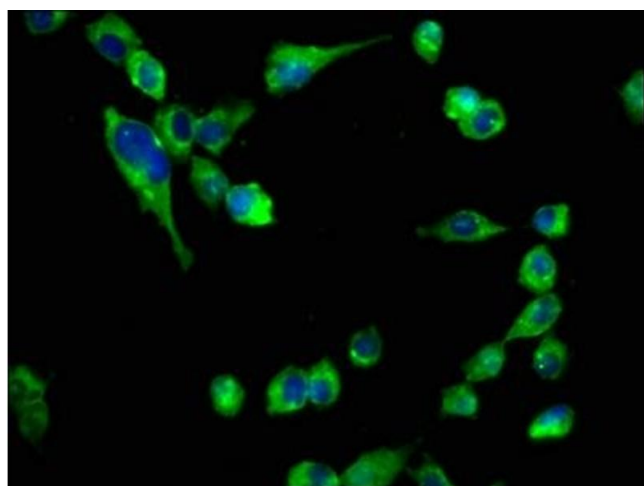
### Immunohistochemistry

**Image 1.** IHC image of ABIN7161352 diluted at 1:400 and staining in paraffin-embedded human kidney tissue performed on a Leica Bond™ system. After dewaxing and hydration, antigen retrieval was mediated by high pressure in a citrate buffer (pH 6.0). Section was blocked with 10 % normal goat serum 30 min at RT. Then primary antibody (1 % BSA) was incubated at 4 °C overnight. The primary is detected by a biotinylated secondary antibody and visualized using an HRP conjugated SP system.



### Western Blotting

**Image 2.** Western Blot Positive WB detected in: Jurkat whole cell lysate All lanes: CHRNA2 antibody at 6.05 µg/mL Secondary Goat polyclonal to rabbit IgG at 1/50000 dilution Predicted band size: 58 kDa Observed band size: 58 kDa



### Immunofluorescence

**Image 3.** Immunofluorescence staining of SH-SY5Y cells with ABIN7161352 at 1:133, counter-stained with DAPI. The cells were fixed in 4 % formaldehyde, permeabilized using 0.2 % Triton X-100 and blocked in 10 % normal Goat Serum. The cells were then incubated with the antibody overnight at 4 °C. The secondary antibody was Alexa Fluor 488-conjugated AffiniPure Goat Anti-Rabbit IgG(H+L).