

Datasheet for ABIN7161360  
**anti-NCS1 antibody (AA 1-190)**[Go to Product page](#)

## 2 Images

## Overview

Quantity:	100 µL
Target:	NCS1
Binding Specificity:	AA 1-190
Reactivity:	Human
Host:	Rabbit
Clonality:	Polyclonal
Conjugate:	This NCS1 antibody is un-conjugated
Application:	Western Blotting (WB), ELISA, Immunohistochemistry (IHC)

## Product Details

Immunogen:	Recombinant Human Neuronal calcium sensor 1 protein (1-190AA)
Isotype:	IgG
Cross-Reactivity:	Human, Mouse, Rat
Purification:	Antigen Affinity Purified

## Target Details

Target:	NCS1
Alternative Name:	NCS1 ( <a href="#">NCS1 Products</a> )
Background:	Background: Neuronal calcium sensor, regulator of G protein-coupled receptor phosphorylation in a calcium dependent manner. Directly regulates GRK1 (RHOK), but not GRK2 to GRK5. Can

## Target Details

substitute for calmodulin (By similarity). Stimulates PI4KB kinase activity (By similarity). Involved in long-term synaptic plasticity through its interaction with PICK1 (By similarity). May also play a role in neuron differentiation through inhibition of the activity of N-type voltage-gated calcium channel .

Aliases: 9430075015Rik antibody, A730032G13Rik antibody, A1836659 antibody, DKFZp761L1223 antibody, FLUP antibody, FREQ antibody, Frequenin antibody, Frequenin homolog (Drosophila) antibody, Frequenin homolog antibody, Frequenin like protein antibody, Frequenin, Drosophila, homolog of antibody, Frequenin-like protein antibody, Frequenin-like ubiquitous protein antibody, Mfreq antibody, NCS 1 antibody, NCS-1 antibody, ncs1 antibody, NCS1\_HUMAN antibody, Neuronal calcium sensor 1 antibody, Neuronal Calicum Sensor 1 antibody

UniProt: [P62166](#)

## Application Details

Application Notes: Recommended dilution: WB:1:500-1:2000, IHC:1:20-1:200,

Restrictions: For Research Use only

## Handling

Format: Liquid

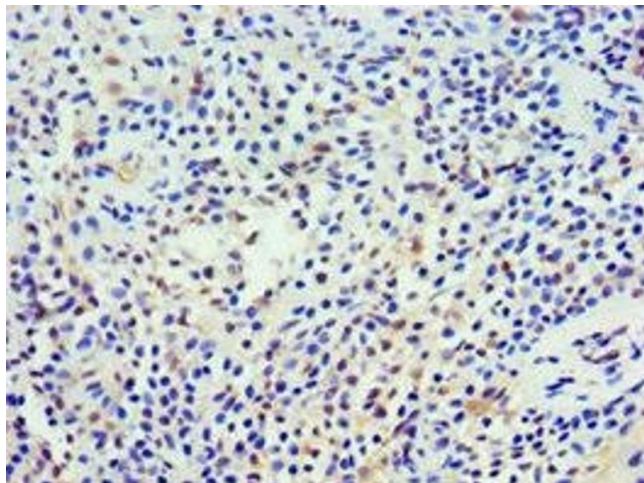
Buffer: PBS with 0.02 % sodium azide, 50 % glycerol, pH 7.3.

Preservative: Sodium azide

Precaution of Use: This product contains Sodium azide: a POISONOUS AND HAZARDOUS SUBSTANCE which should be handled by trained staff only.

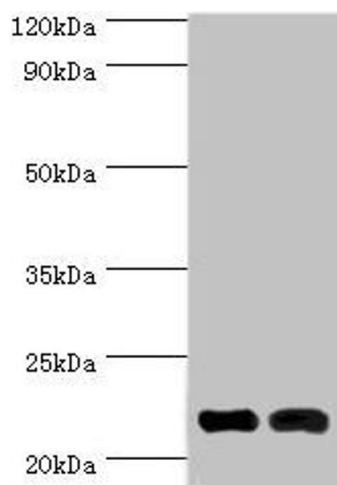
Storage: -20 °C,-80 °C

Storage Comment: Upon receipt, store at -20°C or -80°C. Avoid repeated freeze.



### Immunohistochemistry

**Image 1.** Immunohistochemistry of paraffin-embedded human breast cancer using ABIN7161360 at dilution of 1:100



### Western Blotting

**Image 2.** Western blot All lanes: Neuronal calcium sensor 1 antibody at 10 µg/mL Lane 1: Hela whole cell lysate Lane 2: Rat kidney tissue Secondary Goat polyclonal to rabbit IgG at 1/10000 dilution Predicted band size: 22, 20 kDa Observed band size: 22 kDa