

Datasheet for ABIN7161370
anti-GPM6A antibody (AA 149-213)[Go to Product page](#)

2 Images

Overview

Quantity:	100 µg
Target:	GPM6A
Binding Specificity:	AA 149-213
Reactivity:	Human
Host:	Rabbit
Clonality:	Polyclonal
Conjugate:	This GPM6A antibody is un-conjugated
Application:	Western Blotting (WB), ELISA, Immunofluorescence (IF)

Product Details

Immunogen:	Recombinant Human Neuronal membrane glycoprotein M6-a protein (149-213AA)
Isotype:	IgG
Cross-Reactivity:	Human, Mouse
Purification:	>95%, Protein G purified

Target Details

Target:	GPM6A
Alternative Name:	GPM6A (GPM6A Products)
Background:	Background: Involved in neuronal differentiation, including differentiation and migration of neuronal stem cells. Plays a role in neuronal plasticity and is involved in neurite and filopodia

Target Details

outgrowth, filopodia motility and probably synapse formation. GPM6A-induced filopodia formation involves mitogen-activated protein kinase (MAPK) and Src signaling pathways. May be involved in neuronal NGF-dependent Ca(2+) influx. May be involved in regulation of endocytosis and intracellular trafficking of G-protein-coupled receptors (GPCRs), enhances internalization and recycling of mu-type opioid receptor.

Aliases: GPM6A antibody, GPM6A_HUMAN antibody, M6a antibody, Neuronal membrane glycoprotein M6-a antibody, Neuronal membrane glycoprotein M6-a, antibody

UniProt: [P51674](#)

Application Details

Application Notes: Recommended dilution: WB:1:500-1:5000, IF:1:50-1:200,

Restrictions: For Research Use only

Handling

Format: Liquid

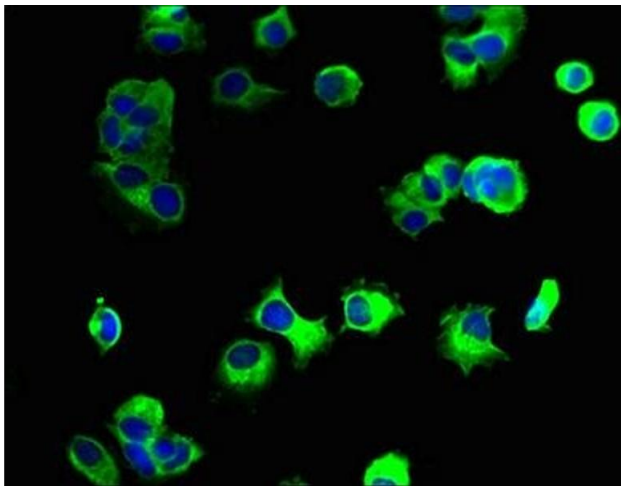
Buffer: Preservative: 0.03 % Proclin 300
Constituents: 50 % Glycerol, 0.01M PBS, PH 7.4

Preservative: ProClin

Precaution of Use: This product contains ProClin: a POISONOUS AND HAZARDOUS SUBSTANCE which should be handled by trained staff only.

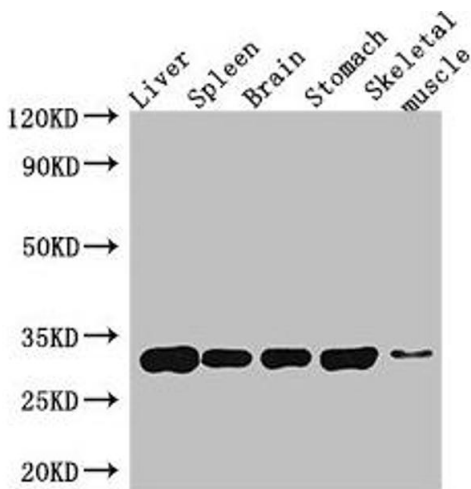
Storage: -20 °C,-80 °C

Storage Comment: Upon receipt, store at -20°C or -80°C. Avoid repeated freeze.



Immunofluorescence

Image 1. Immunofluorescent analysis of MCF-7 cells using ABIN7161370 at dilution of 1:100 and Alexa Fluor 488-conjugated AffiniPure Goat Anti-Rabbit IgG(H+L)



Western Blotting

Image 2. Western Blot Positive WB detected in: Mouse liver tissue, Mouse spleen tissue, Mouse brain tissue, Mouse stomach tissue, Mouse skeletal muscle tissue All lanes: GPM6A antibody at 4 µg/mL Secondary Goat polyclonal to rabbit IgG at 1/50000 dilution Predicted band size: 32, 31, 30 kDa Observed band size: 32 kDa