



[Go to Product page](#)

Datasheet for ABIN7161394
anti-NPX1 antibody (AA 88-227)

2 Images

Overview

Quantity:	100 µg
Target:	NPX1
Binding Specificity:	AA 88-227
Reactivity:	Human
Host:	Rabbit
Clonality:	Polyclonal
Conjugate:	This NPX1 antibody is un-conjugated
Application:	ELISA, Immunohistochemistry (IHC), Immunofluorescence (IF)

Product Details

Immunogen:	Recombinant Human Neuronal pentraxin-1 protein (88-227AA)
Isotype:	IgG
Cross-Reactivity:	Human
Purification:	>95%, Protein G purified

Target Details

Target:	NPX1
Alternative Name:	NPTX1 (NPX1 Products)
Background:	Background: May be involved in mediating uptake of synaptic material during synapse remodeling or in mediating the synaptic clustering of AMPA glutamate receptors at a subset of

Target Details

excitatory synapses.

Aliases: Neuronal pentraxin I antibody, Neuronal pentraxin-1 antibody, NP 1 antibody, NP-I antibody, NP1 antibody, Nptx1 antibody, NPTX1_HUMAN antibody

UniProt: [Q15818](#)

Pathways: [Carbohydrate Homeostasis](#), [Regulation of Cell Size](#), [Signaling Events mediated by VEGFR1 and VEGFR2](#), [Smooth Muscle Cell Migration](#), [Platelet-derived growth Factor Receptor Signaling](#), [VEGFR1 Specific Signals](#), [SARS-CoV-2 Protein Interactome](#)

Application Details

Application Notes: Recommended dilution: IHC:1:20-1:200, IF:1:50-1:200,

Restrictions: For Research Use only

Handling

Format: Liquid

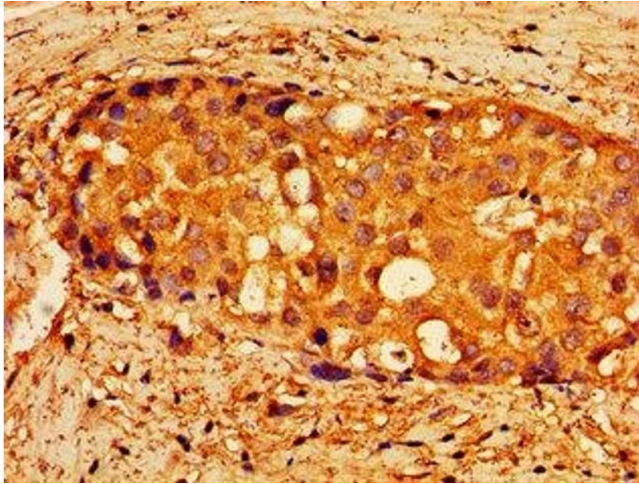
Buffer: Preservative: 0.03 % Proclin 300
Constituents: 50 % Glycerol, 0.01M PBS, pH 7.4

Preservative: ProClin

Precaution of Use: This product contains ProClin: a POISONOUS AND HAZARDOUS SUBSTANCE which should be handled by trained staff only.

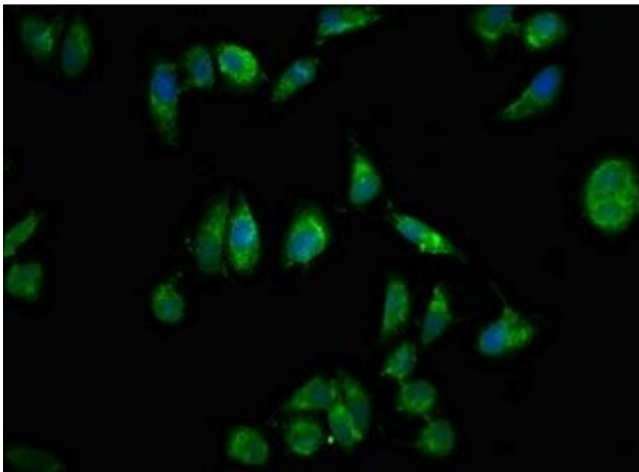
Storage: -20 °C,-80 °C

Storage Comment: Upon receipt, store at -20°C or -80°C. Avoid repeated freeze.



Immunohistochemistry

Image 1. Immunohistochemistry of paraffin-embedded human breast cancer using ABIN7161394 at dilution of 1:100



Immunofluorescence

Image 2. Immunofluorescent analysis of HeLa cells using ABIN7161394 at dilution of 1:100 and Alexa Fluor 488-conjugated AffiniPure Goat Anti-Rabbit IgG(H+L)