

Datasheet for ABIN7161406
anti-PNPLA6 antibody (AA 345-493)[Go to Product page](#)

2 Images

Overview

Quantity:	100 µg
Target:	PNPLA6
Binding Specificity:	AA 345-493
Reactivity:	Human
Host:	Rabbit
Clonality:	Polyclonal
Conjugate:	This PNPLA6 antibody is un-conjugated
Application:	ELISA, Immunohistochemistry (IHC), Immunofluorescence (IF)

Product Details

Immunogen:	Recombinant Human Neuropathy target esterase protein (345-493AA)
Isotype:	IgG
Cross-Reactivity:	Human
Purification:	>95%, Protein G purified

Target Details

Target:	PNPLA6
Alternative Name:	PNPLA6 (PNPLA6 Products)
Background:	Background: Phospholipase B that deacylates intracellular phosphatidylcholine (PtdCho), generating glycerophosphocholine (GroPtdCho). This deacylation occurs at both sn-2 and sn-1

Target Details

positions of PtdCho. Its specific chemical modification by certain organophosphorus (OP) compounds leads to distal axonopathy.

Aliases: EC 3.1.1.5 antibody, Neuropathy target esterase antibody, NTEMND antibody, Patatin like phospholipase domain containing 6 antibody, Patatin like phospholipase domain containing protein 6 antibody, Patatin-like phospholipase domain-containing protein 6 antibody, PLPL6_HUMAN antibody, Pnpla6 antibody, SPG39 antibody, sws antibody

UniProt: [Q8IY17](#)

Pathways: [Ribonucleoside Biosynthetic Process](#)

Application Details

Application Notes: Recommended dilution: IHC:1:500-1:1000, IF:1:50-1:200,

Restrictions: For Research Use only

Handling

Format: Liquid

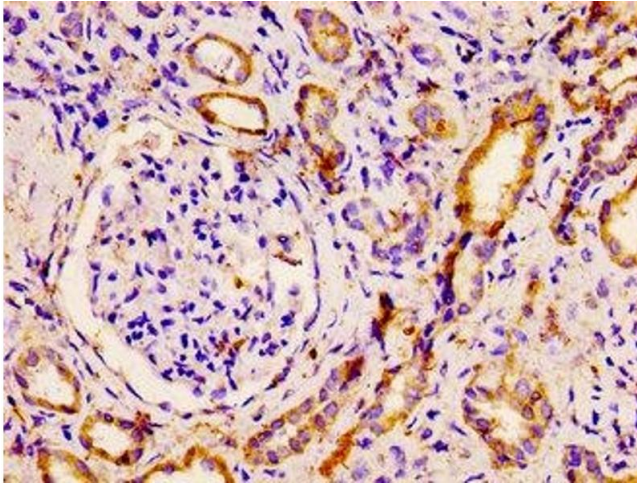
Buffer: Preservative: 0.03 % Proclin 300
Constituents: 50 % Glycerol, 0.01M PBS, pH 7.4

Preservative: ProClin

Precaution of Use: This product contains ProClin: a POISONOUS AND HAZARDOUS SUBSTANCE which should be handled by trained staff only.

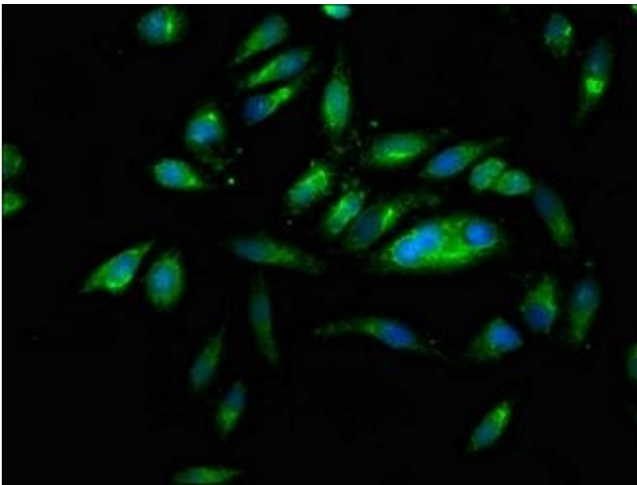
Storage: -20 °C,-80 °C

Storage Comment: Upon receipt, store at -20°C or -80°C. Avoid repeated freeze.



Immunohistochemistry

Image 1. IHC image of ABIN7161406 diluted at 1:500 and staining in paraffin-embedded human kidney tissue performed on a Leica Bond™ system. After dewaxing and hydration, antigen retrieval was mediated by high pressure in a citrate buffer (pH 6.0). Section was blocked with 10% normal goat serum 30min at RT. Then primary antibody (1% BSA) was incubated at 4°C overnight. The primary is detected by a biotinylated secondary antibody and visualized using an HRP conjugated SP system.



Immunofluorescence

Image 2. Immunofluorescence staining of HeLa cells with ABIN7161406 at 1:166, counter-stained with DAPI. The cells were fixed in 4% formaldehyde, permeabilized using 0.2% Triton X-100 and blocked in 10% normal Goat Serum. The cells were then incubated with the antibody overnight at 4°C. The secondary antibody was Alexa Fluor 488-conjugated AffiniPure Goat Anti-Rabbit IgG(H+L).