

Datasheet for ABIN7161445
anti-Neuroserpin antibody (AA 191-240)[Go to Product page](#)

2 Images

Overview

Quantity:	100 µg
Target:	Neuroserpin (SERPINI1)
Binding Specificity:	AA 191-240
Reactivity:	Human
Host:	Rabbit
Clonality:	Polyclonal
Conjugate:	This Neuroserpin antibody is un-conjugated
Application:	ELISA, Immunohistochemistry (IHC)

Product Details

Immunogen:	Recombinant Human Neuroserpin protein (191-240AA)
Isotype:	IgG
Cross-Reactivity:	Human
Purification:	>95%, Protein G purified

Target Details

Target:	Neuroserpin (SERPINI1)
Alternative Name:	SERPINI1 (SERPINI1 Products)
Background:	Background: Serine protease inhibitor that inhibits plasminogen activators and plasmin but not thrombin. May be involved in the formation or reorganization of synaptic connections as well as

Target Details

for synaptic plasticity in the adult nervous system. May protect neurons from cell damage by tissue-type plasminogen activator.

Aliases: DKFZp781N13156 antibody, Neuroserpin antibody, NEUS_HUMAN antibody, Peptidase inhibitor 12 antibody, PI-12 antibody, PI12 antibody, Protease inhibitor 12 antibody, Serine or cysteine proteinase inhibitor clade I (neuroserpin) member 1 antibody, Serine or cysteine proteinase inhibitor clade I member 1 antibody, Serpin I1 antibody, Serpin peptidase inhibitor clade I (neuroserpin) member 1 antibody, SERPINI1 antibody

UniProt: [Q99574](#)

Pathways: [Regulation of Hormone Metabolic Process](#)

Application Details

Application Notes: Recommended dilution: IHC:1:20-1:200,

Restrictions: For Research Use only

Handling

Format: Liquid

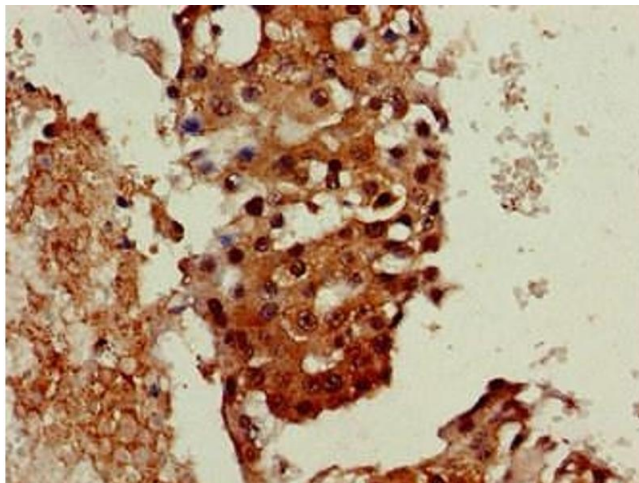
Buffer: Preservative: 0.03 % Proclin 300
Constituents: 50 % Glycerol, 0.01M PBS, pH 7.4

Preservative: ProClin

Precaution of Use: This product contains ProClin: a POISONOUS AND HAZARDOUS SUBSTANCE which should be handled by trained staff only.

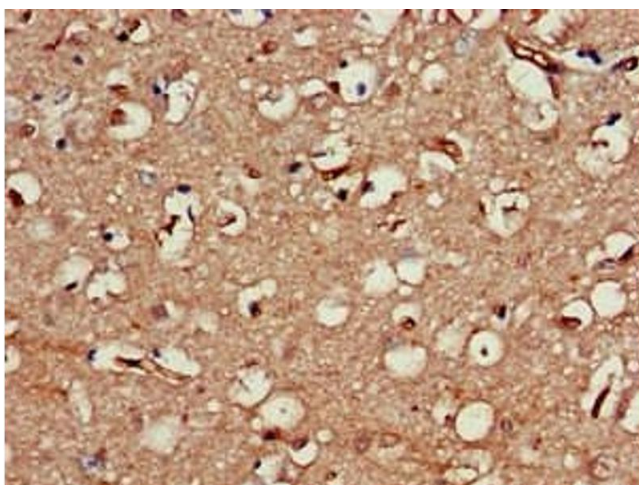
Storage: -20 °C,-80 °C

Storage Comment: Upon receipt, store at -20°C or -80°C. Avoid repeated freeze.



Immunohistochemistry

Image 1. Immunohistochemistry of paraffin-embedded human breast cancer using ABIN7161445 at dilution of 1:100



Immunohistochemistry

Image 2. Immunohistochemistry of paraffin-embedded human brain tissue using ABIN7161445 at dilution of 1:100