



[Go to Product page](#)

Datasheet for ABIN7161468

## anti-Neurotrophin 4 antibody (AA 82-210)

### 2 Images

#### Overview

Quantity:	100 µg
Target:	Neurotrophin 4 (NTF4)
Binding Specificity:	AA 82-210
Reactivity:	Human
Host:	Rabbit
Clonality:	Polyclonal
Conjugate:	This Neurotrophin 4 antibody is un-conjugated
Application:	ELISA, Immunohistochemistry (IHC), Immunofluorescence (IF)

#### Product Details

Immunogen:	Recombinant Human Neurotrophin-4 protein (82-210AA)
Isotype:	IgG
Cross-Reactivity:	Human
Purification:	>95%, Protein G purified

#### Target Details

Target:	Neurotrophin 4 (NTF4)
Alternative Name:	NTF4 ( <a href="#">NTF4 Products</a> )
Background:	Background: Target-derived survival factor for peripheral sensory sympathetic neurons. Aliases: GLC10 antibody, GLC10 antibody, Neurotrophic factor 4 antibody, Neurotrophic factor

## Target Details

---

5 antibody, Neurotrophin 4 antibody, Neurotrophin 4/5 antibody, Neurotrophin 5 (neurotrophin 4/5) antibody, Neurotrophin 5 antibody, Neurotrophin-4 antibody, Neurotrophin-5 antibody, Neutrophic factor 4 antibody, Neutrophic factor 5 antibody, NT 4 antibody, NT 4/5 antibody, NT 5 antibody, NT-4 antibody, NT-5 antibody, NT4 antibody, NT4/5 antibody, NT4P antibody, NT5 antibody, NTF4 antibody, NTF4\_HUMAN antibody, NTF5 antibody

UniProt: [P34130](#)

Pathways: [RTK Signaling](#)

## Application Details

---

Application Notes: Recommended dilution: IHC:1:20-1:200, IF:1:50-1:200,

Restrictions: For Research Use only

## Handling

---

Format: Liquid

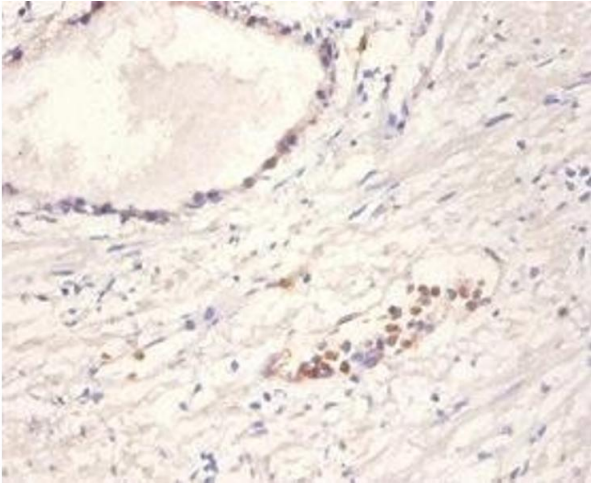
Buffer: Preservative: 0.03 % Proclin 300  
Constituents: 50 % Glycerol, 0.01M PBS, PH 7.4

Preservative: ProClin

Precaution of Use: This product contains ProClin: a POISONOUS AND HAZARDOUS SUBSTANCE which should be handled by trained staff only.

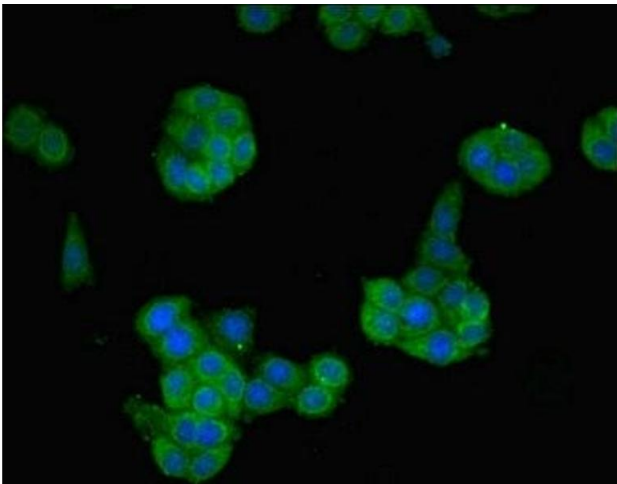
Storage: -20 °C,-80 °C

Storage Comment: Upon receipt, store at -20°C or -80°C. Avoid repeated freeze.



### Immunohistochemistry

**Image 1.** Immunohistochemistry of paraffin-embedded human prostate tissue using ABIN7161468 at dilution of 1:100



### Immunofluorescence

**Image 2.** Immunofluorescent analysis of PC-3 cells using ABIN7161468 at dilution of 1:100 and Alexa Fluor 488-conjugated AffiniPure Goat Anti-Rabbit IgG(H+L)