

Datasheet for ABIN7161482  
**anti-SLC3A1 antibody (AA 1-68)**[Go to Product page](#)

## 3 Images

## Overview

Quantity:	100 µg
Target:	SLC3A1
Binding Specificity:	AA 1-68
Reactivity:	Human
Host:	Rabbit
Clonality:	Polyclonal
Conjugate:	This SLC3A1 antibody is un-conjugated
Application:	Western Blotting (WB), ELISA, Immunohistochemistry (IHC), Immunofluorescence (IF)

## Product Details

Immunogen:	Recombinant Human Neutral and basic amino acid transport protein rBAT protein (1-68AA)
Isotype:	IgG
Cross-Reactivity:	Human, Mouse, Rat
Purification:	>95%, Protein G purified

## Target Details

Target:	SLC3A1
Alternative Name:	SLC3A1 ( <a href="#">SLC3A1 Products</a> )
Background:	Background: Involved in the high-affinity, sodium-independent transport of cystine and neutral and dibasic amino acids (system B(0,+)-like activity). May function as an activator of SLC7A9

## Target Details

and be involved in the high-affinity reabsorption of cystine in the kidney tubule.

Aliases: +-type amino acid transport protein antibody, amino acid transporter 1 antibody, ATR1 antibody, B(0 antibody, B(0,+)-type amino acid transport protein antibody, CSNU1 antibody, D2H antibody, FLJ34681 antibody, NBAT antibody, Neutral and basic amino acid transport protein rBAT antibody, RBAT antibody, SLC31\_HUMAN antibody, SLC3A1 antibody, SLC3A1 variant B antibody, SLC3A1 variant C antibody, SLC3A1 variant D antibody, SLC3A1 variant E antibody, SLC3A1 variant F antibody, SLC3A1 variant G antibody, solute carrier family 3 (cystine, dibasic and neutral amino acid transporters), member 1 antibody, Solute carrier family 3 member 1 antibody

UniProt: [Q07837](#)

## Application Details

Application Notes: Recommended dilution: WB:1:200-1:5000, IHC:1:20-1:200, IF:1:50-1:200,

Restrictions: For Research Use only

## Handling

Format: Liquid

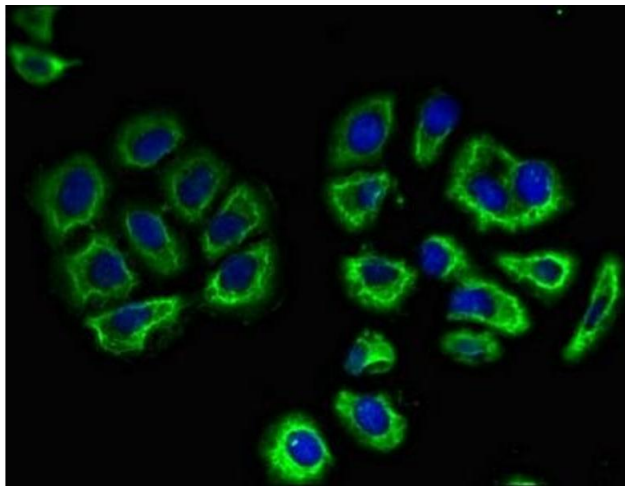
Buffer: Preservative: 0.03 % Proclin 300  
Constituents: 50 % Glycerol, 0.01M PBS, pH 7.4

Preservative: ProClin

Precaution of Use: This product contains ProClin: a POISONOUS AND HAZARDOUS SUBSTANCE which should be handled by trained staff only.

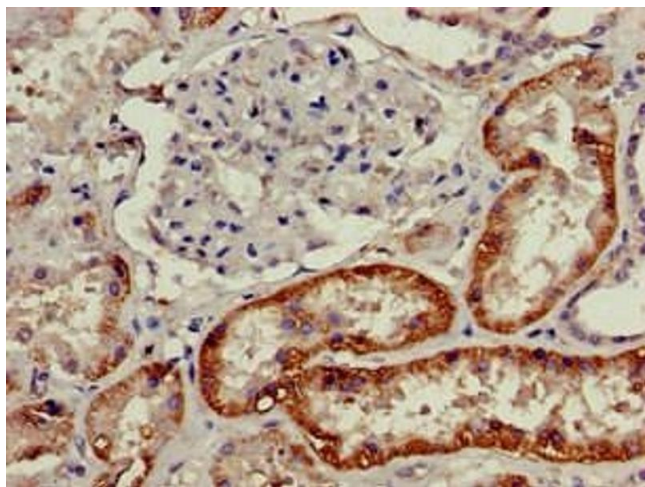
Storage: -20 °C,-80 °C

Storage Comment: Upon receipt, store at -20°C or -80°C. Avoid repeated freeze.



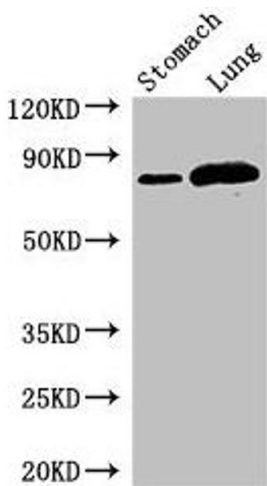
**Immunofluorescence**

**Image 1.** Immunofluorescent analysis of A549 cells using ABIN7161482 at dilution of 1:100 and Alexa Fluor 488-conjugated AffiniPure Goat Anti-Rabbit IgG(H+L)



**Immunohistochemistry**

**Image 2.** Immunohistochemistry of paraffin-embedded human kidney tissue using ABIN7161482 at dilution of 1:100



**Western Blotting**

**Image 3.** Western Blot Positive WB detected in: Mouse stomach tissue, Rat lung tissue All lanes: SLC3A1 antibody at 2.8 µg/mL Secondary Goat polyclonal to rabbit IgG at 1/50000 dilution Predicted band size: 79, 47, 46, 36, 58, 67, 64 kDa Observed band size: 79 kDa