



[Go to Product page](#)

Datasheet for ABIN7161486
anti-ASA2 antibody (AA 255-506)

3 Images

Overview

Quantity:	100 µg
Target:	ASA2
Binding Specificity:	AA 255-506
Reactivity:	Human
Host:	Rabbit
Clonality:	Polyclonal
Conjugate:	This ASA2 antibody is un-conjugated
Application:	Western Blotting (WB), ELISA, Immunohistochemistry (IHC), Immunofluorescence (IF)

Product Details

Immunogen:	Recombinant Human Neutral ceramidase protein (255-506AA)
Isotype:	IgG
Cross-Reactivity:	Human, Rat
Purification:	>95%, Protein G purified

Target Details

Target:	ASA2
Alternative Name:	ASA2 (ASA2 Products)
Background:	Background: Hydrolyzes the sphingolipid ceramide into sphingosine and free fatty acid at an optimal pH of 6.5-8.5. Acts as a key regulator of sphingolipid signaling metabolites by

Target Details

generating sphingosine at the cell surface. Acts as a repressor of apoptosis both by reducing C16-ceramide, thereby preventing ceramide-induced apoptosis, and generating sphingosine, a precursor of the antiapoptotic factor sphingosine 1-phosphate. Probably involved in the digestion of dietary sphingolipids in intestine by acting as a key enzyme for the catabolism of dietary sphingolipids and regulating the levels of bioactive sphingolipid metabolites in the intestinal tract.

Aliases: Acylsphingosine deacylase 2 antibody, AI585898 antibody, ASAH2 antibody, ASAH2_HUMAN antibody, BCDase antibody, hCD antibody, HNAC1 antibody, LCDase antibody, MGC129777 antibody, mitochondrial ceramidase antibody, N acylsphingosine amidohydrolase (non lysosomal ceramidase) 2 antibody, N acylsphingosine amidohydrolase 2 antibody, N CDase antibody, N-acylsphingosine amidohydrolase 2 antibody, N-CDase antibody, NCDase antibody, Neutral ceramidase soluble form antibody, Non lysosomal ceramidase antibody, Non-lysosomal ceramidase antibody

UniProt: [Q9NR71](#)

Application Details

Application Notes: Recommended dilution: WB:1:500-1:5000, IHC:1:20-1:200, IF:1:50-1:500,

Restrictions: For Research Use only

Handling

Format: Liquid

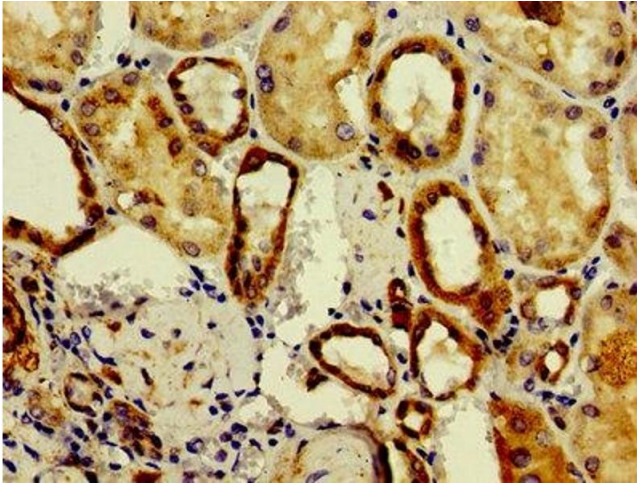
Buffer: Preservative: 0.03 % Proclin 300
Constituents: 50 % Glycerol, 0.01M PBS, PH 7.4

Preservative: ProClin

Precaution of Use: This product contains ProClin: a POISONOUS AND HAZARDOUS SUBSTANCE which should be handled by trained staff only.

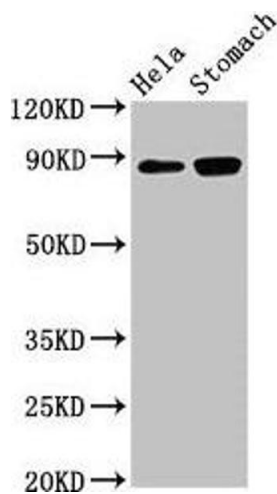
Storage: -20 °C,-80 °C

Storage Comment: Upon receipt, store at -20°C or -80°C. Avoid repeated freeze.



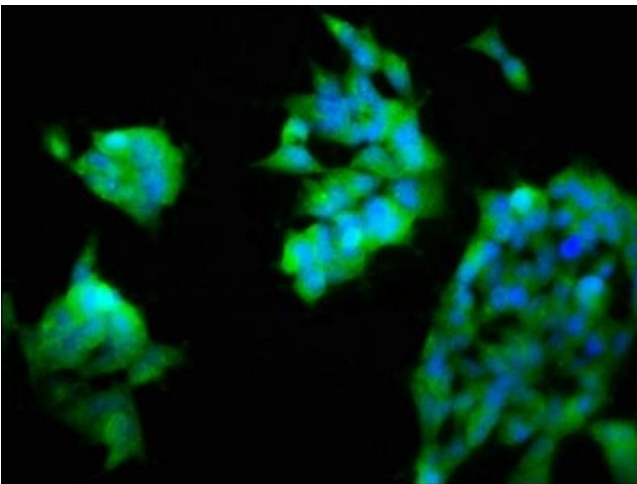
Immunohistochemistry

Image 1. Immunohistochemistry of paraffin-embedded human kidney tissue using ABIN7161486 at dilution of 1:100



Western Blotting

Image 2. Western Blot Positive WB detected in: HeLa whole cell lysate, Rat stomach tissue All lanes: ASAH2 antibody at 3 µg/mL Secondary Goat polyclonal to rabbit IgG at 1/50000 dilution Predicted band size: 86, 82 kDa Observed band size: 86 kDa



Immunofluorescence

Image 3. Immunofluorescence staining of 293 cells with ABIN7161486 at 1:200, counter-stained with DAPI. The cells were fixed in 4% formaldehyde, permeabilized using 0.2% Triton X-100 and blocked in 10% normal Goat Serum. The cells were then incubated with the antibody overnight at 4°C. The secondary antibody was Alexa Fluor 488-conjugated AffiniPure Goat Anti-Rabbit IgG(H+L).