



[Go to Product page](#)

Datasheet for ABIN7161518
anti-NBR1 antibody (AA 1-280)

1 Image

Overview

Quantity:	100 µL
Target:	NBR1
Binding Specificity:	AA 1-280
Reactivity:	Human
Host:	Rabbit
Clonality:	Polyclonal
Conjugate:	This NBR1 antibody is un-conjugated
Application:	ELISA, Immunohistochemistry (IHC)

Product Details

Immunogen:	Recombinant Human Next to BRCA1 gene 1 protein (1-280AA)
Isotype:	IgG
Cross-Reactivity:	Human
Purification:	Antigen Affinity Purified

Target Details

Target:	NBR1
Alternative Name:	NBR1 (NBR1 Products)
Background:	Background: Acts probably as a receptor for selective autophagosomal degradation of ubiquitinated targets.

Target Details

Aliases: 1A1 3B antibody, 1A13B antibody, B box protein antibody, Cell migration-inducing gene 19 protein antibody, KIAA0049 antibody, M17S2 antibody, Membrane component chromosome 17 surface marker 2 antibody, Membrane component, chromosome 17, surface marker 2 (ovarian carcinoma antigen CA125) antibody, MIG 19 antibody, MIG19 antibody, Migration inducing protein 19 antibody, NBR 1 antibody, Nbr1 antibody, NBR1, autophagy cargo receptor antibody, NBR1_HUMAN antibody, Neighbor of BRCA1 gene 1 antibody, Neighbor of BRCA1 gene 1 protein antibody, Next to BRCA1 gene 1 protein antibody, Ovarian carcinoma antigen CA125 antibody, Protein 1A1-3B antibody

UniProt: [Q14596](#)

Pathways: [Autophagy](#)

Application Details

Application Notes: Recommended dilution: IHC:1:20-1:200,

Restrictions: For Research Use only

Handling

Format: Liquid

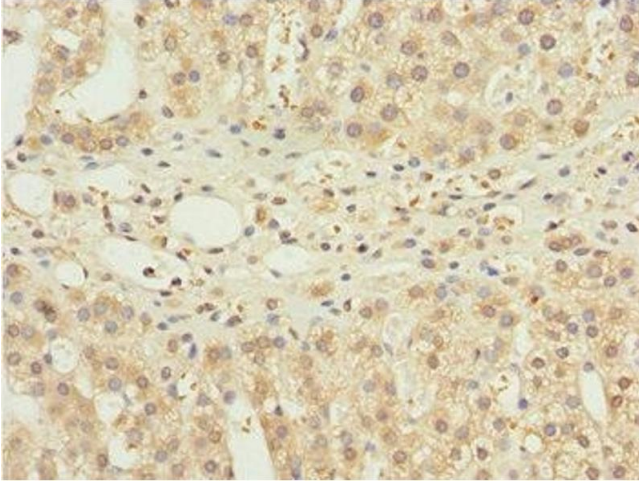
Buffer: PBS with 0.02 % sodium azide, 50 % glycerol, pH 7.3.

Preservative: Sodium azide

Precaution of Use: This product contains Sodium azide: a POISONOUS AND HAZARDOUS SUBSTANCE which should be handled by trained staff only.

Storage: -20 °C,-80 °C

Storage Comment: Upon receipt, store at -20°C or -80°C. Avoid repeated freeze.



Immunohistochemistry

Image 1. Immunohistochemistry of paraffin-embedded human adrenal gland tissue using ABIN7161518 at dilution of 1:100