



[Go to Product page](#)

Datasheet for ABIN7161520  
**anti-NFKBIA antibody (AA 27-317)**

3 Images

Overview

Quantity:	100 µL
Target:	NFKBIA
Binding Specificity:	AA 27-317
Reactivity:	Human
Host:	Rabbit
Clonality:	Polyclonal
Conjugate:	This NFKBIA antibody is un-conjugated
Application:	Western Blotting (WB), ELISA, Immunohistochemistry (IHC), Immunofluorescence (IF)

Product Details

Immunogen:	Recombinant Human NF-kappa-B inhibitor alpha protein (27-317AA)
Isotype:	IgG
Cross-Reactivity:	Human
Purification:	>95%, Antigen Affinity purified & Affinity purified

Target Details

Target:	NFKBIA
Alternative Name:	NFKBIA ( <a href="#">NFKBIA Products</a> )
Background:	Background: Inhibits the activity of dimeric NF-kappa-B/REL complexes by trapping REL dimers in the cytoplasm through masking of their nuclear localization signals. On cellular stimulation

## Target Details

---

by immune and proinflammatory responses, becomes phosphorylated promoting ubiquitination and degradation, enabling the dimeric RELA to translocate to the nucleus and activate transcription.

Aliases: I kappa B alpha antibody, I-kappa-B-alpha antibody, IkappaBalpha antibody, IκB-alpha antibody, IKBA antibody, IKBA\_HUMAN antibody, IκBalpha antibody, MAD 3 antibody, MAD3 antibody, Major histocompatibility complex enhancer-binding protein MAD3 antibody, NF kappa B inhibitor alpha antibody, NF-kappa-B inhibitor alpha antibody, NFKBI antibody, NFKBIA antibody, Nuclear factor of kappa light chain gene enhancer in B cells antibody, Nuclear factor of kappa light polypeptide gene enhancer in B cells inhibitor alpha antibody

UniProt: [P25963](#)

Pathways: [NF-kappaB Signaling](#), [TCR Signaling](#), [TLR Signaling](#), [Fc-epsilon Receptor Signaling Pathway](#), [Activation of Innate immune Response](#), [Cellular Response to Molecule of Bacterial Origin](#), [Maintenance of Protein Location](#), [Hepatitis C](#), [Protein targeting to Nucleus](#), [Toll-Like Receptors Cascades](#), [BCR Signaling](#)

## Application Details

---

Application Notes: Recommended dilution: WB:1:1000-1:5000, IHC:1:100-1:500, IF:1:100-1:500,

Restrictions: For Research Use only

## Handling

---

Format: Liquid

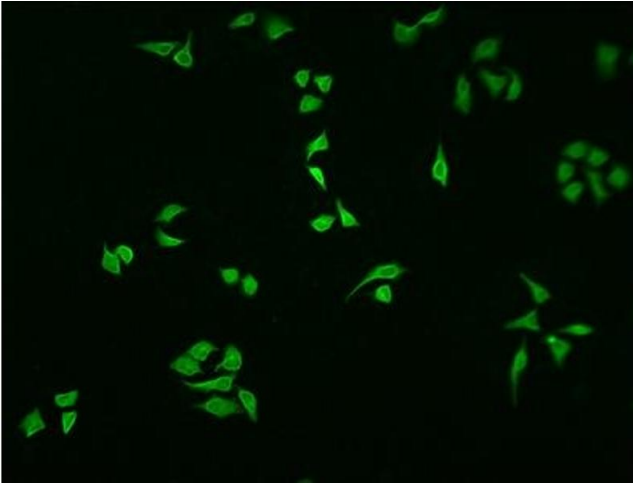
Buffer: Preservative: 0.03 % Proclin 300  
Constituents: 50 % Glycerol, 0.01M PBS, PH 7.4

Preservative: ProClin

Precaution of Use: This product contains ProClin: a POISONOUS AND HAZARDOUS SUBSTANCE which should be handled by trained staff only.

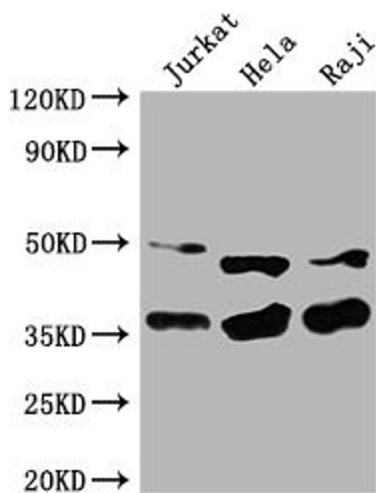
Storage: -20 °C,-80 °C

Storage Comment: Upon receipt, store at -20°C or -80°C. Avoid repeated freeze.



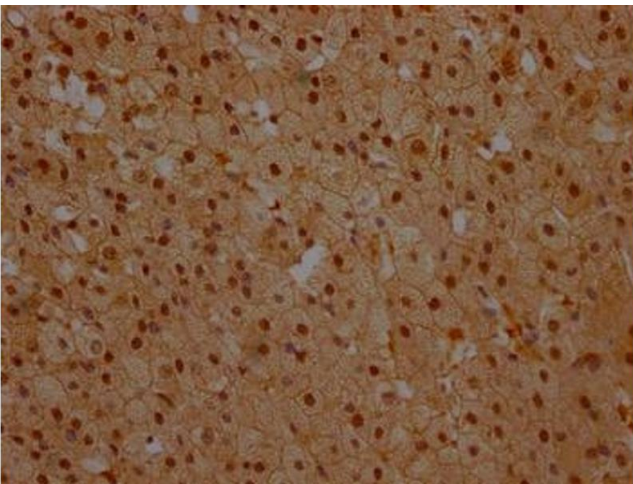
### Immunofluorescence

**Image 1.** Immunofluorescence staining of HepG2 cells with ABIN7161520 at 1:100, counter-stained with DAPI. The cells were fixed in 4 % formaldehyde and blocked in 10 % normal Goat Serum. The cells were then incubated with the antibody overnight at 4 °C. The secondary antibody was Alexa Fluor 488-conjugated AffiniPure Goat Anti-Rabbit IgG(H+L).



### Western Blotting

**Image 2.** Western Blot Positive WB detected in: Jurkat whole cell lysate, HeLa whole cell lysate, Raji whole cell lysate All lanes: NFKBIA antibody at 1:2000 Secondary Goat polyclonal to rabbit IgG at 1/50000 dilution Predicted band size: 36 kDa Observed band size: 36 kDa



### Immunohistochemistry

**Image 3.** IHC image of ABIN7161520 diluted at 1:100 and staining in paraffin-embedded human adrenal gland tissue performed on a Leica Bond™ system. After dewaxing and hydration, antigen retrieval was mediated by high pressure in a citrate buffer (pH 6.0). Section was blocked with 10 % normal goat serum 30 min at RT. Then primary antibody (1 % BSA) was incubated at 4 °C overnight. The primary is detected by a Goat anti-rabbit polymer IgG labeled by HRP and visualized using 0.05 % DAB.